


Product datasheet

Anti-Cripto1/CRIPTO antibody ab19917

★★★★★ 2 Abreviews 16 References 5 Images

Overview

Product name	Anti-Cripto1/CRIPTO antibody
Description	Rabbit polyclonal to Cripto1/CRIPTO
Host species	Rabbit
Tested applications	Suitable for: IHC-P, ICC, WB
Species reactivity	Reacts with: Mouse, Human Predicted to work with: Cow 
Immunogen	This product was produced with the following immunogens: Synthetic peptide corresponding to Human Cripto1/CRIPTO aa 50-150 (internal sequence) conjugated to keyhole limpet haemocyanin. (Peptide available as ab23309 , ab23310) Synthetic peptide corresponding to Human Cripto1/CRIPTO aa 100 to the C-terminus (internal sequence) conjugated to keyhole limpet haemocyanin. (Peptide available as ab23309 , ab23310)
Positive control	Human Embryonic Stem Cells, Cripto1/CRIPTO Recombinant Protein ICC: mES cells
General notes	The Life Science industry has been in the grips of a reproducibility crisis for a number of years. Abcam is leading the way in addressing this with our range of recombinant monoclonal antibodies and knockout edited cell lines for gold-standard validation. Please check that this product meets your needs before purchasing. If you have any questions, special requirements or concerns, please send us an inquiry and/or contact our Support team ahead of purchase. Recommended alternatives for this product can be found below, along with publications, customer reviews and Q&As

Properties

Form	Liquid
Storage instructions	Shipped at 4°C. Store at +4°C short term (1-2 weeks). Upon delivery aliquot. Store at -20°C or -80°C. Avoid freeze / thaw cycle.
Storage buffer	pH: 7.40 Preservative: 0.02% Sodium azide Constituent: PBS

Batches of this product that have a concentration < 1mg/ml may have BSA added as a stabilising agent. If you would like information about the formulation of a specific lot, please contact our scientific support team who will be happy to help.

Purity	Immunogen affinity purified
Clonality	Polyclonal
Isotype	IgG

Applications

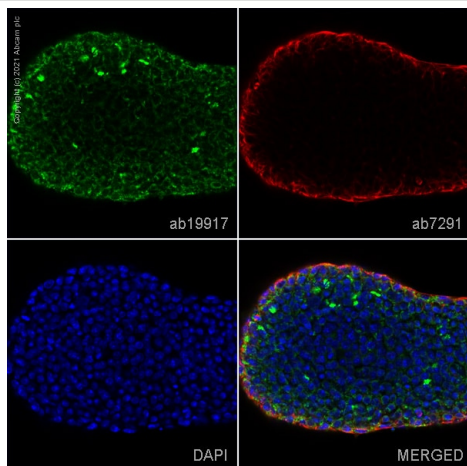
The Abpromise guarantee Our [Abpromise guarantee](#) covers the use of ab19917 in the following tested applications. The application notes include recommended starting dilutions; optimal dilutions/concentrations should be determined by the end user.

Application	Abreviews	Notes
IHC-P		Use at an assay dependent concentration.
ICC		Use a concentration of 1 - 5 µg/ml.
WB		Use a concentration of 1 µg/ml. Detects a band of approximately 17 kDa (predicted molecular weight: 21 kDa).

Target

Function	Could play a role in the determination of the epiblastic cells that subsequently give rise to the mesoderm.
Tissue specificity	Preferentially expressed in gastric and colorectal carcinomas than in their normal counterparts.
Sequence similarities	Contains 1 EGF-like domain.
Cellular localization	Cell membrane.

Images

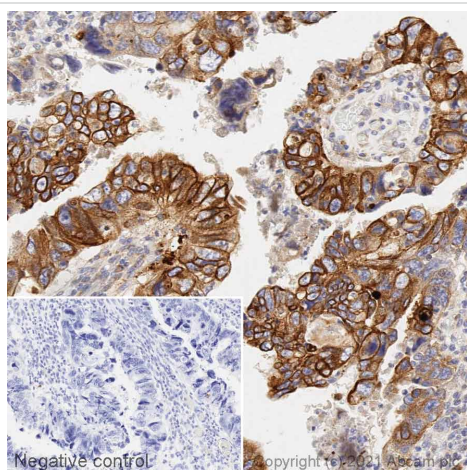


Immunocytochemistry - Anti-Cripto1/CRIPTO antibody (ab19917)

ab19917 staining Cripto1/CRIPTO in mES cells. The cells were fixed with 100% methanol (5 min), permeabilized with 0.1% PBS-Tween for 5 minutes and then blocked with 1% BSA/10% normal goat serum/0.3M glycine in 0.1% PBS-Tween for 1h. The cells were then incubated overnight at 4°C with ab19917 at 1µg/ml and ab7291, Mouse monoclonal [DM1A] to alpha Tubulin - Loading Control. Cells were then incubated with ab150081, Goat polyclonal Secondary Antibody to Rabbit IgG - H&L (Alexa Fluor® 488), pre-adsorbed at 1/1000 dilution (shown in green) and ab150120, Goat polyclonal Secondary Antibody to Mouse IgG - H&L (Alexa Fluor® 594), pre-adsorbed at 1/1000 dilution (shown in pseudocolour red). Nuclear DNA was labelled with DAPI (shown in blue).

Also suitable in cells fixed with 4% paraformaldehyde (10 min).

Image was acquired with a confocal microscope (Leica-Microsystems TCS SP8) and a single confocal section is shown.

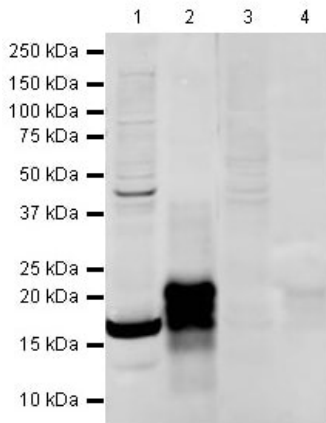


Immunohistochemistry (Formalin/PFA-fixed paraffin-embedded sections) - Anti-Cripto1/CRIPTO antibody (ab19917)

Immunohistochemical analysis of Human Cripto1 staining in Human colon cancer formalin fixed paraffin embedded tissue section*, performed on a Leica Bond™ system using the standard protocol F. The section was pre-treated using heat mediated antigen retrieval (Sodium Citrate based pH 6.0 solution, epitope retrieval solution 1) for 20 mins. The section was then incubated with ab19917, 5 µg/ml, for 15 mins at room temperature and detected using an HRP conjugated compact polymer system. DAB was used as the chromogen. The section was then counterstained with haematoxylin and mounted with DPX.

For other IHC staining systems (automated and non-automated) customers should optimize variable parameters such as antigen retrieval conditions, primary antibody concentration and antibody incubation times.

**Tissue obtained from the Human Research Tissue Bank, supported by the NIHR Cambridge Biomedical Research Centre*



Western blot - Anti-Cripto1/CRIPTO antibody (ab19917)

All lanes : Anti-Cripto1/CRIPTO antibody (ab19917) at 1 µg/ml

Lane 1 : Human Embryonic Stem Cell Lysate at 20 µg

Lane 2 : Cripto1/CRIPTO protein at 0.1 µg

Lane 3 : Human Embryonic Stem Cell Lysate at 20 µg with Human Cripto1/CRIPTO peptide at 1 µg/ml

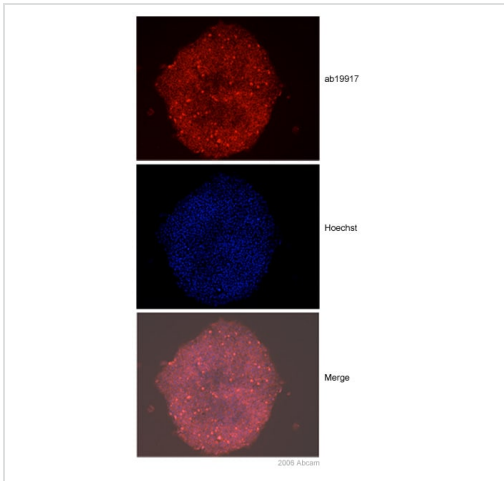
Lane 4 : Cripto1/CRIPTO protein at 0.1 µg with Human Cripto1/CRIPTO peptide at 1 µg/ml

Secondary

All lanes : Rabbit IgG secondary antibody ([ab28446](#)) at 1/10000 dilution

Predicted band size: 21 kDa

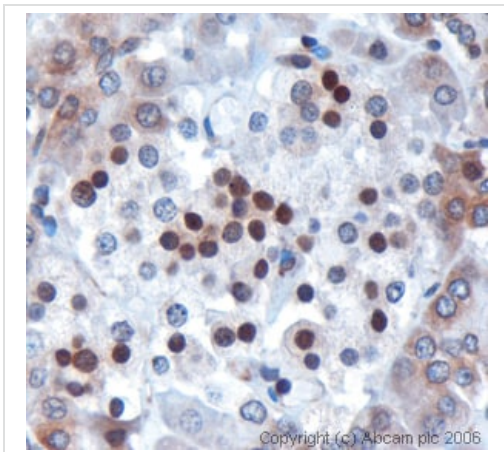
The 17 kDa band detected in human embryonic stem cells may correspond with Cripto1/CRIPTO that has had its signal sequence cleaved. The Cripto1/CRIPTO bands were blocked with the immunizing peptide, [ab23310](#).



Anti-Cripto1/CRIPTO antibody, ab19917, stained the membrane of human embryonic stem cells at a dilution of 1/100.

Immunocytochemistry - Anti-Cripto1/CRIPTO antibody (ab19917)

This image is courtesy of Ludovic Vallier, University of Cambridge, UK



The image shows staining of human pancreas tissue. Staining was nuclear in some islet cells and cytoplasmic in some cells of the acini. Antigen retrieval was performed using Citrate at pH6. Nuclear localization of Cripto1/CRIPTO protein has been described in the literature: Gong YP et al. Eur J Surg Oncol, 2006.

Immunohistochemistry (Formalin/PFA-fixed paraffin-embedded sections) - Anti-Cripto1/CRIPTO antibody (ab19917)

Please note: All products are "FOR RESEARCH USE ONLY. NOT FOR USE IN DIAGNOSTIC PROCEDURES"

Our Abpromise to you: Quality guaranteed and expert technical support

- Replacement or refund for products not performing as stated on the datasheet
- Valid for 12 months from date of delivery
- Response to your inquiry within 24 hours
- We provide support in Chinese, English, French, German, Japanese and Spanish
- Extensive multi-media technical resources to help you
- We investigate all quality concerns to ensure our products perform to the highest standards

If the product does not perform as described on this datasheet, we will offer a refund or replacement. For full details of the Abpromise, please visit <https://www.abcam.com/abpromise> or contact our technical team.

Terms and conditions

- Guarantee only valid for products bought direct from Abcam or one of our authorized distributors