

## Product datasheet

# Anti-CRISPLD2 antibody ab105656

1 References 2 Images

### Overview

<b>Product name</b>	Anti-CRISPLD2 antibody
<b>Description</b>	Rabbit polyclonal to CRISPLD2
<b>Host species</b>	Rabbit
<b>Tested applications</b>	<b>Suitable for:</b> WB
<b>Species reactivity</b>	<b>Reacts with:</b> Human <b>Predicted to work with:</b> Mouse, Rat
<b>Immunogen</b>	Synthetic peptide corresponding to a region within N terminal amino acids 1-50 (MSCVLGGVIP LGLLFLVCGS QGYLLPNVTL LEELLSKYQH NESHSRVRRRA) of Human CRISPLD2 (NP_113664). <a href="#">Run BLAST with ExPASy</a> <a href="#">Run BLAST with NCBI</a>
<b>Positive control</b>	Jurkat cell lysate

### Properties

<b>Form</b>	Liquid
<b>Storage instructions</b>	Shipped at 4°C. Upon delivery aliquot and store at -20°C. Avoid repeated freeze / thaw cycles.
<b>Storage buffer</b>	Preservative: 0.09% Sodium azide Constituents: 2% Sucrose, PBS
<b>Purity</b>	Immunogen affinity purified
<b>Clonality</b>	Polyclonal
<b>Isotype</b>	IgG

### Applications

Our [Abpromise guarantee](#) covers the use of **ab105656** in the following tested applications.

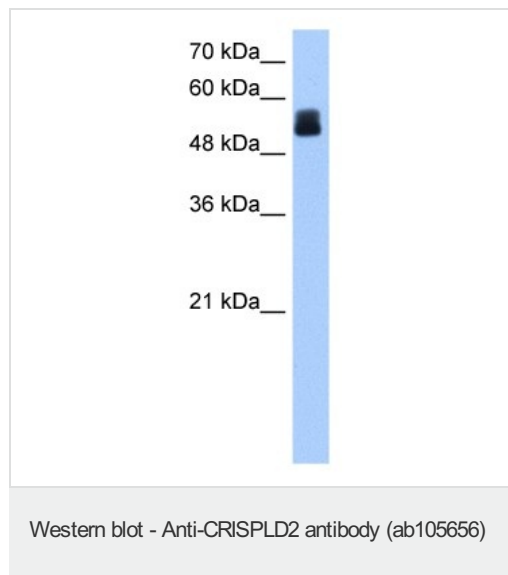
The application notes include recommended starting dilutions; optimal dilutions/concentrations should be determined by the end user.

Application	Abreviews	Notes
WB		Use a concentration of 1 µg/ml. Predicted molecular weight: 56 kDa. Good results were obtained when blocked with 5% non-fat dry milk in 0.05% PBS-T.

## Target

<b>Function</b>	Promotes matrix assembly.
<b>Sequence similarities</b>	Belongs to the CRISP family. Contains 2 LCCL domains.
<b>Cellular localization</b>	Secreted.

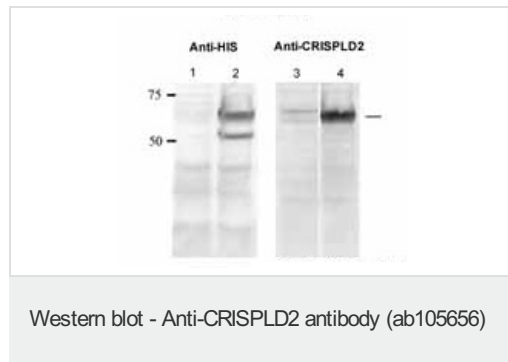
## Images



Anti-CRISPLD2 antibody (ab105656) at 1 µg/ml + Jurkat cell lysate at 10 µg

**Predicted band size:** 56 kDa

Gel concentration: 12%



CRISPLD2 antibody - N-terminal region (ab105656) validated by WB using Human and mouse serum Human fetal lung cell culture at 0.5µg/ml.

**Please note:** All products are "FOR RESEARCH USE ONLY. NOT FOR USE IN DIAGNOSTIC PROCEDURES"

## Our Promise to you: Quality guaranteed and expert technical support

- Replacement or refund for products not performing as stated on the datasheet
- Valid for 12 months from date of delivery
- Response to your inquiry within 24 hours
- We provide support in Chinese, English, French, German, Japanese and Spanish
- Extensive multi-media technical resources to help you

- We investigate all quality concerns to ensure our products perform to the highest standards

If the product does not perform as described on this datasheet, we will offer a refund or replacement. For full details of the Abpromise, please visit <https://www.abcam.com/abpromise> or contact our technical team.

### **Terms and conditions**

---

- Guarantee only valid for products bought direct from Abcam or one of our authorized distributors