


Product datasheet

Anti-CrkL antibody ab129318

2 Images

Overview

Product name	Anti-CrkL antibody
Description	Goat polyclonal to CrkL
Host species	Goat
Tested applications	Suitable for: WB, IHC-P
Species reactivity	Reacts with: Human Predicted to work with: Mouse, Rat, Monkey, a wide range of other species, Gorilla, Common marmoset, Bat 
Immunogen	Synthetic peptide: C-KIFDPQNPDENE (with a Cysteine residue linker), corresponding to C terminal amino acids 292-303 of Human CrkL (NP_005198.1; P46109). Run BLAST with Run BLAST with
Positive control	Human Thymus tissue, K562 lysate
General notes	The Life Science industry has been in the grips of a reproducibility crisis for a number of years. Abcam is leading the way in addressing this with our range of recombinant monoclonal antibodies and knockout edited cell lines for gold-standard validation. Please check that this product meets your needs before purchasing. If you have any questions, special requirements or concerns, please send us an inquiry and/or contact our Support team ahead of purchase. Recommended alternatives for this product can be found below, along with publications, customer reviews and Q&As

Properties

Form	Liquid
Storage instructions	Shipped at 4°C. Upon delivery aliquot and store at -20°C. Avoid repeated freeze / thaw cycles.
Storage buffer	pH: 7.30 Preservative: 0.02% Sodium azide Constituents: 99% Tris buffered saline, 0.5% BSA
Purity	Immunogen affinity purified
Clonality	Polyclonal
Isotype	IgG

Applications

The Abpromise guarantee

Our [Abpromise guarantee](#) covers the use of ab129318 in the following tested applications.

The application notes include recommended starting dilutions; optimal dilutions/concentrations should be determined by the end user.

Application	Abreviews	Notes
WB		Use a concentration of 0.01 - 0.03 µg/ml. Predicted molecular weight: 34 kDa.
IHC-P		Use a concentration of 2.5 - 3.7 µg/ml. Perform heat mediated antigen retrieval with citrate buffer pH 6 before commencing with IHC staining protocol.

Target

Function

May mediate the transduction of intracellular signals.

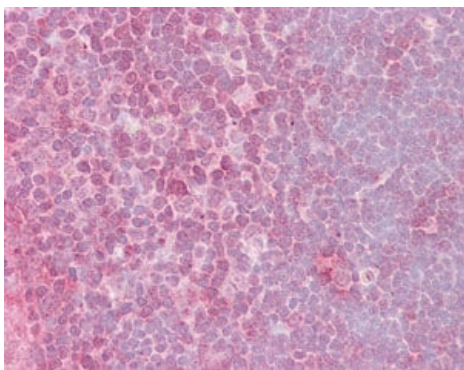
Sequence similarities

Belongs to the CRK family.

Contains 1 SH2 domain.

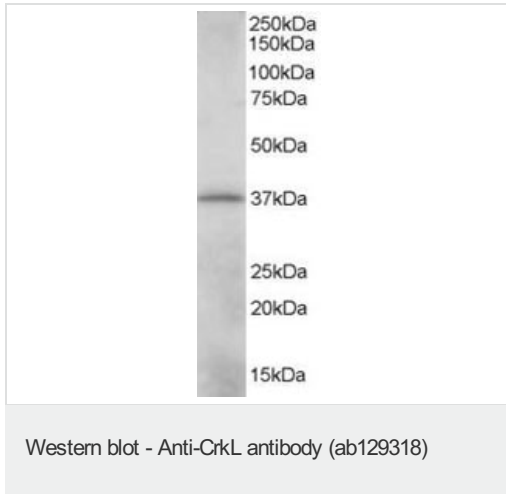
Contains 2 SH3 domains.

Images



ab129318 at 2.5 µg/ml staining CrkL in Human Thymus tissue by Immunohistochemistry Formalin-fixed, Paraffin-embedded tissue.

Immunohistochemistry (Formalin/PFA-fixed paraffin-embedded sections) - Anti-CrkL antibody (ab129318)



Anti-CrkL antibody (ab129318) at 0.01 µg/ml + K562 lysate in RIPA buffer at 35 µg

Developed using the ECL technique.

Predicted band size: 34 kDa

Please note: All products are "FOR RESEARCH USE ONLY. NOT FOR USE IN DIAGNOSTIC PROCEDURES"

Our Abpromise to you: Quality guaranteed and expert technical support

- Replacement or refund for products not performing as stated on the datasheet
- Valid for 12 months from date of delivery
- Response to your inquiry within 24 hours
- We provide support in Chinese, English, French, German, Japanese and Spanish
- Extensive multi-media technical resources to help you
- We investigate all quality concerns to ensure our products perform to the highest standards

If the product does not perform as described on this datasheet, we will offer a refund or replacement. For full details of the Abpromise, please visit <https://www.abcam.com/abpromise> or contact our technical team.

Terms and conditions

- Guarantee only valid for products bought direct from Abcam or one of our authorized distributors