


Product datasheet

Anti-CRLR antibody - N-terminal ab140773

1 Image

Overview

Product name	Anti-CRLR antibody - N-terminal
Description	Rabbit polyclonal to CRLR - N-terminal
Host species	Rabbit
Tested applications	Suitable for: IHC-P
Species reactivity	Reacts with: Human Predicted to work with: Mouse, Rat, Rabbit, Horse, Dog, Pig, Monkey, Gorilla, Common marmoset, Orangutan 
Immunogen	Synthetic peptide corresponding to 15 amino acids from the N-terminal extracellular domain of Human CRLR (NP_005786.1).
Positive control	Human colon tissue.
General notes	<p>The Life Science industry has been in the grips of a reproducibility crisis for a number of years. Abcam is leading the way in addressing this with our range of recombinant monoclonal antibodies and knockout edited cell lines for gold-standard validation. Please check that this product meets your needs before purchasing.</p> <p>If you have any questions, special requirements or concerns, please send us an inquiry and/or contact our Support team ahead of purchase. Recommended alternatives for this product can be found below, along with publications, customer reviews and Q&As</p>

Properties

Form	Liquid
Storage instructions	Shipped at 4°C. Upon delivery aliquot. Store at -20°C.
Storage buffer	pH: 7.4 Preservative: 0.1% Sodium azide Constituent: 99% PBS
Purity	Immunogen affinity purified
Clonality	Polyclonal
Isotype	IgG

Applications

The Abpromise guarantee

Our [Abpromise guarantee](#) covers the use of ab140773 in the following tested applications.

The application notes include recommended starting dilutions; optimal dilutions/concentrations should be determined by the end user.

Application	Abreviews	Notes
IHC-P		Use a concentration of 16 µg/ml. Perform heat mediated antigen retrieval with citrate buffer pH 6 before commencing with IHC staining protocol.

Target

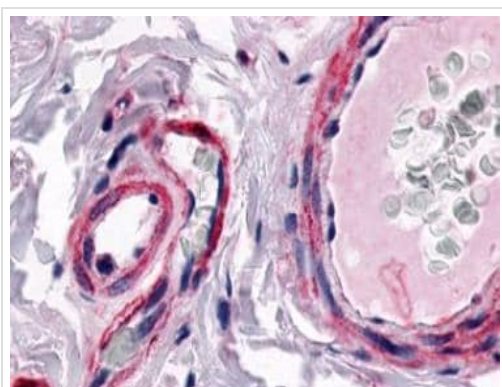
Relevance

CRLR is a receptor for calcitonin gene related peptide type 1. The activity of CRLR is mediated by G proteins which activate adenylyl cyclase. CRLR expression has been reported in brain, lung, blood vessel, liver, and intestinal tract. ESTs have been isolated from B Cell/lung/testis, bone marrow, embryo, lung, and synovium libraries.

Cellular localization

Cell Membrane; Multi-pass membrane protein.

Images



Immunohistochemical analysis of formalin-fixed, paraffin embedded Human colon tissue (submucosal vessels) labelling CRLR with ab140773 at 16 µg/ml.

Immunohistochemistry (Formalin/PFA-fixed paraffin-embedded sections) - Anti-CRLR antibody - N-terminal (ab140773)

Please note: All products are "FOR RESEARCH USE ONLY. NOT FOR USE IN DIAGNOSTIC PROCEDURES"

Our Abpromise to you: Quality guaranteed and expert technical support

- Replacement or refund for products not performing as stated on the datasheet
- Valid for 12 months from date of delivery
- Response to your inquiry within 24 hours
- We provide support in Chinese, English, French, German, Japanese and Spanish
- Extensive multi-media technical resources to help you
- We investigate all quality concerns to ensure our products perform to the highest standards

If the product does not perform as described on this datasheet, we will offer a refund or replacement. For full details of the Abpromise, please visit <https://www.abcam.com/abpromise> or contact our technical team.

Terms and conditions

- Guarantee only valid for products bought direct from Abcam or one of our authorized distributors