


Product datasheet

Anti-CRMP2 (phospho T509) antibody ab192799

2 Images

Overview

Product name	Anti-CRMP2 (phospho T509) antibody
Description	Rabbit polyclonal to CRMP2 (phospho T509)
Host species	Rabbit
Specificity	ab192799 detects endogenous levels of CRMP2 only when phosphorylated at Threonine 509.
Tested applications	Suitable for: WB, IHC-P
Species reactivity	Reacts with: Human Predicted to work with: Mouse, Rat 
Immunogen	Synthetic peptide corresponding to Human CRMP2 (phospho T509) conjugated to Keyhole Limpet Haemocyanin (KLH). Peptide sequence around phosphorylation site of threonine 509 (S-V-T(p)-P-K). Database link: Q16555
Positive control	WB: HT29 cell extract; IHC: Human brain tissue.
General notes	<p>CRMP-2 is an enzyme with dihydropyrimidinase activity. Plays a role in RhoA-dependent signaling, through interaction with and regulation of Rho kinase. Plays a role in neurogenesis. Aberrantly expressed in fetal Down syndrome brain.</p> <p>Reproducibility is key to advancing scientific discovery and accelerating scientists' next breakthrough.</p> <p>Abcam is leading the way with our range of recombinant antibodies, knockout-validated antibodies and knockout cell lines, all of which support improved reproducibility.</p> <p>We are also planning to innovate the way in which we present recommended applications and species on our product datasheets, so that only applications & species that have been tested in our own labs, our suppliers or by selected trusted collaborators are covered by our Abpromise™ guarantee.</p> <p>In preparation for this, we have started to update the applications & species that this product is Abpromise guaranteed for.</p> <p>We are also updating the applications & species that this product has been “predicted to work with,” however this information is not covered by our Abpromise guarantee.</p> <p>Applications & species from publications and Abreviews that have not been tested in our own labs or in those of our suppliers are not covered by the Abpromise guarantee.</p> <p>Please check that this product meets your needs before purchasing. If you have any questions, special requirements or concerns, please send us an inquiry and/or contact our Support team</p>

ahead of purchase. Recommended alternatives for this product can be found below, as well as customer reviews and Q&As.

Properties

Form	Liquid
Storage instructions	Shipped at 4°C. Store at +4°C short term (1-2 weeks). Upon delivery aliquot. Store at -20°C long term. Avoid freeze / thaw cycle.
Storage buffer	pH: 7.40 Preservative: 0.02% Sodium azide Constituents: 50% Glycerol (glycerin, glycerine), 0.87% Sodium chloride, 49% PBS
Purity	Immunogen affinity purified
Purification notes	ab192799 was purified by affinity-chromatography using epitope-specific phosphopeptide. Non-phospho specific antibodies were removed by chromatography using non-phosphopeptide.
Clonality	Polyclonal
Isotype	IgG

Applications

Our [Abpromise guarantee](#) covers the use of **ab192799** in the following tested applications.

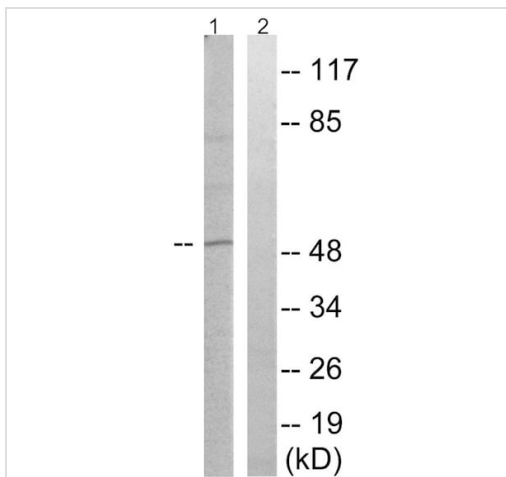
The application notes include recommended starting dilutions; optimal dilutions/concentrations should be determined by the end user.

Application	Abreviews	Notes
WB		1/500 - 1/1000. Predicted molecular weight: 62 kDa.
IHC-P		1/50 - 1/100.

Target

Function	Necessary for signaling by class 3 semaphorins and subsequent remodeling of the cytoskeleton. Plays a role in axon guidance, neuronal growth cone collapse and cell migration.
Tissue specificity	Ubiquitous.
Sequence similarities	Belongs to the DHOase family. Hydantoinase/dihydropyrimidinase subfamily.
Post-translational modifications	3F4, a monoclonal antibody which strongly stains neurofibrillary tangles in Alzheimer disease brains, specifically labels DPYSL2 when phosphorylated on Ser-518, Ser-522 and Thr-509.
Cellular localization	Cytoplasm.

Images



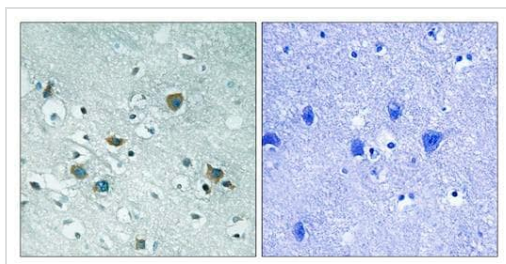
Western blot - Anti-CRMP2 (phospho T509) antibody (ab192799)

All lanes : Anti-CRMP2 (phospho T509) antibody (ab192799) at 1/500 dilution

Lane 1 : HT29 cell extract

Lane 2 : HT29 cell extract with antigen-specific peptide

Predicted band size: 62 kDa



Immunohistochemistry (Formalin/PFA-fixed paraffin-embedded sections) - Anti-CRMP2 (phospho T509) antibody (ab192799)

Immunohistochemical analysis of paraffin-embedded human brain tissue labeling CRMP2 (phospho T509) with ab192799 at 1/50 (left) or ab192799 preincubated with blocking peptide (right).

Please note: All products are "FOR RESEARCH USE ONLY. NOT FOR USE IN DIAGNOSTIC PROCEDURES"

Our Abpromise to you: Quality guaranteed and expert technical support

- Replacement or refund for products not performing as stated on the datasheet
- Valid for 12 months from date of delivery
- Response to your inquiry within 24 hours
- We provide support in Chinese, English, French, German, Japanese and Spanish
- Extensive multi-media technical resources to help you
- We investigate all quality concerns to ensure our products perform to the highest standards

If the product does not perform as described on this datasheet, we will offer a refund or replacement. For full details of the Abpromise, please visit <https://www.abcam.com/abpromise> or contact our technical team.

Terms and conditions

- Guarantee only valid for products bought direct from Abcam or one of our authorized distributors