

Product datasheet

Anti-CRMP4 antibody ab36204

1 References 1 Image

Overview

Product name	Anti-CRMP4 antibody
Description	Rabbit polyclonal to CRMP4
Host species	Rabbit
Specificity	No cross reactivity was detected with CRMP1, CRMP2, CRMP3 or CRMP5.
Tested applications	Suitable for: WB, IHC-Fr, IHC-P
Species reactivity	Reacts with: Mouse, Rat, Human
Immunogen	A 15 residue synthetic peptide derived from C-terminal domain of human collapsing-response mediator (Type 4).

Properties

Form	Liquid
Storage instructions	Shipped at 4°C. Store at +4°C short term (1-2 weeks). Upon delivery aliquot. Store at -20°C long term.
Storage buffer	Constituent: Whole serum
Purity	Whole antiserum
Clonality	Polyclonal
Isotype	IgG

Applications

Our [Abpromise guarantee](#) covers the use of **ab36204** in the following tested applications.

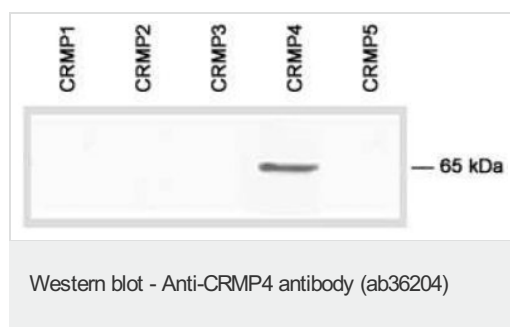
The application notes include recommended starting dilutions; optimal dilutions/concentrations should be determined by the end user.

Application	Abreviews	Notes
WB		1/2000. Predicted molecular weight: 65 kDa.
IHC-Fr		1/500.
IHC-P		Use at an assay dependent concentration.

Target

Function	Necessary for signaling by class 3 semaphorins and subsequent remodeling of the cytoskeleton. Plays a role in axon guidance, neuronal growth cone collapse and cell migration.
Tissue specificity	Mainly expressed in heart and skeletal muscle. Also strongly expressed in fetal brain and spinal cord.
Sequence similarities	Belongs to the DHOase family. Hydantoinase/dihydropyrimidinase subfamily.
Post-translational modifications	Phosphorylation on Ser-522 by DYRK2 promotes subsequent phosphorylation on Thr-509, Thr-514 and Ser-518 by GSK3.
Cellular localization	Cytoplasm. Cell projection > growth cone. Colocalizes with synaptic vesicle protein 2 in the central region of the growth cone.

Images



All lanes : Anti-CRMP4 antibody (ab36204)

Lane 1 : E.coli lysate transformed with cDNA of human CRMP1

Lane 2 : E.coli lysate transformed with cDNA of human CRMP2

Lane 3 : E.coli lysate transformed with cDNA of human CRMP3

Lane 4 : E.coli lysate transformed with cDNA of human CRMP4

Lane 5 : E.coli lysate transformed with cDNA of human CRMP5

Predicted band size: 65 kDa

Observed band size: 65 kDa

Please note: All products are "FOR RESEARCH USE ONLY. NOT FOR USE IN DIAGNOSTIC PROCEDURES"

Our Abpromise to you: Quality guaranteed and expert technical support

- Replacement or refund for products not performing as stated on the datasheet
- Valid for 12 months from date of delivery
- Response to your inquiry within 24 hours
- We provide support in Chinese, English, French, German, Japanese and Spanish
- Extensive multi-media technical resources to help you
- We investigate all quality concerns to ensure our products perform to the highest standards

If the product does not perform as described on this datasheet, we will offer a refund or replacement. For full details of the Abpromise, please visit <https://www.abcam.com/abpromise> or contact our technical team.

Terms and conditions

- Guarantee only valid for products bought direct from Abcam or one of our authorized distributors