




Product datasheet

Anti-CSDE1/NRU antibody ab176584

2 References 2 Images

Overview

Product name	Anti-CSDE1/NRU antibody
Description	Rabbit polyclonal to CSDE1/NRU
Host species	Rabbit
Tested applications	Suitable for: WB, IP
Species reactivity	Reacts with: Human Predicted to work with: Cow, Pig, Chimpanzee, Cynomolgus monkey, Rhesus monkey, Gorilla, Orangutan 
Immunogen	Synthetic peptide within Human CSDE1/NRU aa 50-100. The exact sequence is proprietary. (NP_001007554.1). Sequence: FFHCSQYNGNLQDLKVGDDVEFEVSSDRRTGKPIAVK LVKIKQEILPEER M Database link: O75534  Run BLAST with  Run BLAST with
Positive control	HeLa and 293T whole cell lysates.
General notes	This product was previously labelled as CSDE1

Properties

Form	Liquid
Storage instructions	Shipped at 4°C. Store at +4°C short term (1-2 weeks). Upon delivery aliquot. Store at -20°C long term. Avoid freeze / thaw cycle.
Storage buffer	Preservative: 0.09% Sodium azide Constituents: 0.1% BSA, 99% Tris buffered saline
Purity	Immunogen affinity purified
Purification notes	ab176584 was affinity purified using an epitope specific to CSDE1/NRU immobilized on solid support.
Clonality	Polyclonal

Isotype

IgG

Applications

Our [Abpromise guarantee](#) covers the use of **ab176584** in the following tested applications.

The application notes include recommended starting dilutions; optimal dilutions/concentrations should be determined by the end user.

Application	Abreviews	Notes
WB		1/2000 - 1/10000. Predicted molecular weight: 89 kDa.
IP		Use at 2-10 µg/mg of lysate.

Target

Function

RNA-binding protein. Required for internal initiation of translation of human rhinovirus RNA. May be involved in translationally coupled mRNA turnover. Implicated with other RNA-binding proteins in the cytoplasmic deadenylation/translational and decay interplay of the FOS mRNA mediated by the major coding-region determinant of instability (mCRD) domain.

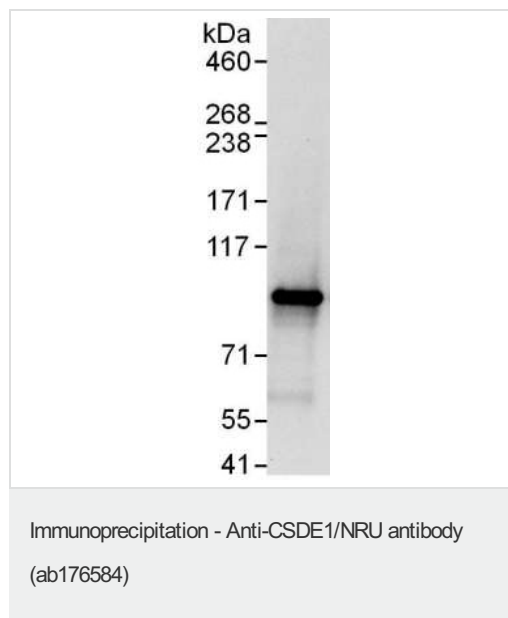
Sequence similarities

Contains 9 CSD (cold-shock) domains.

Cellular localization

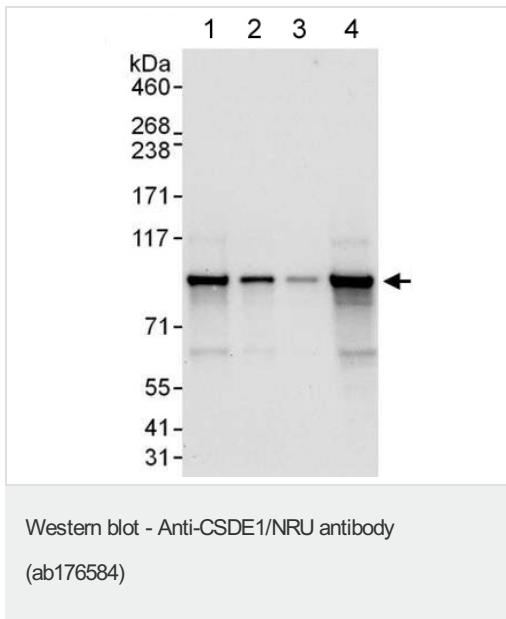
Cytoplasm.

Images



Detection of CSDE1/NRU by Western Blot of Immunoprecipitate. ab176584 at 0.4µg/ml labeling CSDE1/NRU in HeLa whole cell lysate (1 mg/IP; 20% of IP loaded) immunoprecipitated using ab176584 at 6µg/mg lysate.

Detection: Chemiluminescence with exposure time of 10 seconds.



All lanes : Anti-CSDE1/NRU antibody (ab176584) at 0.04 µg/ml

Lane 1 : HeLa whole cell lysate at 50 µg

Lane 2 : HeLa whole cell lysate at 15 µg

Lane 3 : HeLa whole cell lysate at 5 µg

Lane 4 : 293T whole cell lysate at 50 µg

Developed using the ECL technique.

Predicted band size: 89 kDa

Exposure time: 10 seconds

Please note: All products are "FOR RESEARCH USE ONLY. NOT FOR USE IN DIAGNOSTIC PROCEDURES"

Our Abpromise to you: Quality guaranteed and expert technical support

- Replacement or refund for products not performing as stated on the datasheet
- Valid for 12 months from date of delivery
- Response to your inquiry within 24 hours
- We provide support in Chinese, English, French, German, Japanese and Spanish
- Extensive multi-media technical resources to help you
- We investigate all quality concerns to ensure our products perform to the highest standards

If the product does not perform as described on this datasheet, we will offer a refund or replacement. For full details of the Abpromise, please visit <https://www.abcam.com/abpromise> or contact our technical team.

Terms and conditions

- Guarantee only valid for products bought direct from Abcam or one of our authorized distributors