




Product datasheet

Anti-CSR1 antibody ab175319

2 Images

Overview

Product name	Anti-CSR1 antibody
Description	Rabbit polyclonal to CSR1
Host species	Rabbit
Tested applications	Suitable for: IHC-P
Species reactivity	Reacts with: Human Predicted to work with: Chicken, Cow, Orangutan 
Immunogen	Recombinant full length protein corresponding to Human CSR1 aa 1-193. Sequence: MPNWGGGKKCGVCQKTVYFAEEVQCEGNSFHKSCFLC MVCKKNLDSTTVA VHGEEIYCKSCYGGKKGPKGYGYGQGAGTLSTDKGESLGI KHEEAPGHRP TTNPNAKFAQKIGGSERCPRCSQAVYAAEKVIGAGKSW HKACFRCAKCG KGLESTTLADKDGNEYCKGCYAKNFGPKGFQGGAGAL VHSE Database link: P21291  Run BLAST with  Run BLAST with
Positive control	Stomach cell lysate
General notes	The Life Science industry has been in the grips of a reproducibility crisis for a number of years. Abcam is leading the way in addressing this with our range of recombinant monoclonal antibodies and knockout edited cell lines for gold-standard validation. Please check that this product meets your needs before purchasing. If you have any questions, special requirements or concerns, please send us an inquiry and/or contact our Support team ahead of purchase. Recommended alternatives for this product can be found below, along with publications, customer reviews and Q&As

Properties

Form	Liquid
Storage instructions	Shipped at 4°C. Store at +4°C short term (1-2 weeks). Upon delivery aliquot. Store at -20°C long

term. Avoid freeze / thaw cycle.

Storage buffer

pH: 7.30
Preservative: 0.02% Sodium azide
Constituents: 50% Glycerol, 49% PBS

Purity

Protein A purified

Clonality

Polyclonal

Isotype

IgG

Applications

The Abpromise guarantee

Our [Abpromise guarantee](#) covers the use of ab175319 in the following tested applications.

The application notes include recommended starting dilutions; optimal dilutions/concentrations should be determined by the end user.

Application	Abreviews	Notes
IHC-P		1/50 - 1/200. ab171870 - Rabbit polyclonal IgG, is suitable for use as an isotype control with this antibody.

Target

Function

Could play a role in neuronal development.

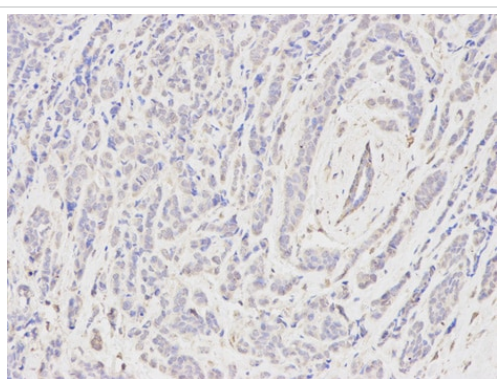
Sequence similarities

Contains 2 LIM zinc-binding domains.

Cellular localization

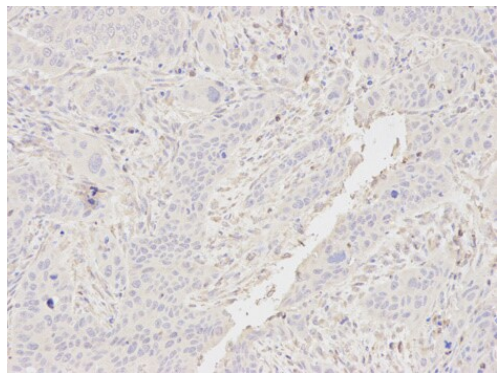
Nucleus.

Images



Immunohistochemistry (Formalin/PFA-fixed paraffin-embedded sections) analysis of human breast cancer tissue labelling CSRP1 with ab175319 at 1/400. Magnification: 200x.

Immunohistochemistry (Formalin/PFA-fixed paraffin-embedded sections) - Anti-CSRP1 antibody (ab175319)



Immunohistochemistry (Formalin/PFA-fixed paraffin-embedded sections) analysis of human esophageal cancer tissue labelling CSRP1 with ab175319 at 1/400. Magnification: 200x.

Immunohistochemistry (Formalin/PFA-fixed paraffin-embedded sections) - Anti-CSRP1 antibody (ab175319)

Please note: All products are "FOR RESEARCH USE ONLY. NOT FOR USE IN DIAGNOSTIC PROCEDURES"

Our Abpromise to you: Quality guaranteed and expert technical support

- Replacement or refund for products not performing as stated on the datasheet
- Valid for 12 months from date of delivery
- Response to your inquiry within 24 hours
- We provide support in Chinese, English, French, German, Japanese and Spanish
- Extensive multi-media technical resources to help you
- We investigate all quality concerns to ensure our products perform to the highest standards

If the product does not perform as described on this datasheet, we will offer a refund or replacement. For full details of the Abpromise, please visit <https://www.abcam.com/abpromise> or contact our technical team.

Terms and conditions

- Guarantee only valid for products bought direct from Abcam or one of our authorized distributors