


Product datasheet

Anti-CSRP2/Dlp1 antibody [EPR13164] ab178695

Recombinant RabMAb

2 Images

Overview

Product name	Anti-CSRP2/Dlp1 antibody [EPR13164]
Description	Rabbit monoclonal [EPR13164] to CSRP2/Dlp1
Host species	Rabbit
Tested applications	Suitable for: WB Unsuitable for: ICC/IF,IHC-P or IP
Species reactivity	Reacts with: Human Predicted to work with: Mouse, Rat 
Immunogen	Recombinant fragment within Human CSRP2/Dlp1. The exact sequence is proprietary. Database link: Q16527
Positive control	Human small intestine and fetal kidney lysates.
General notes	This product is a recombinant monoclonal antibody, which offers several advantages including: <ul style="list-style-type: none"> - High batch-to-batch consistency and reproducibility - Improved sensitivity and specificity - Long-term security of supply - Animal-free production For more information see here . Our RabMAb [®] technology is a patented hybridoma-based technology for making rabbit monoclonal antibodies. For details on our patents, please refer to RabMAb[®] patents .

Properties

Form	Liquid
Storage instructions	Shipped at 4°C. Store at +4°C short term (1-2 weeks). Upon delivery aliquot. Store at -20°C long term. Avoid freeze / thaw cycle.
Storage buffer	pH: 7.20 Preservative: 0.01% Sodium azide Constituents: 9% PBS, 40% Glycerol (glycerin, glycerine), 0.05% BSA, 50% Tissue culture supernatant
Purity	Tissue culture supernatant
Clonality	Monoclonal

Clone number EPR13164

Isotype IgG

Applications

The Abpromise guarantee Our [Abpromise guarantee](#) covers the use of ab178695 in the following tested applications. The application notes include recommended starting dilutions; optimal dilutions/concentrations should be determined by the end user.

Application	Abreviews	Notes
WB		1/1000 - 1/5000. Predicted molecular weight: 21 kDa.

Application notes Is unsuitable for ICC/IF, IHC-P or IP.

Target

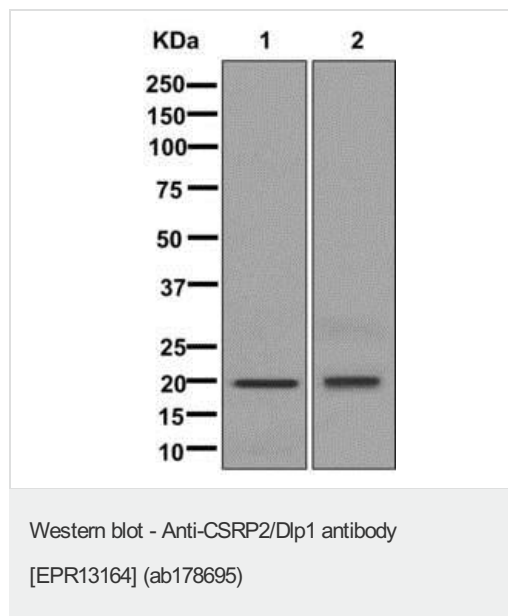
Function Drastically down-regulated in response to PDGF-BB or cell injury, that promote smooth muscle cell proliferation and dedifferentiation. Seems to play a role in the development of the embryonic vascular system.

Tissue specificity Highly expressed in the aorta, but not in heart and skeletal muscle.

Sequence similarities Contains 2 LIM zinc-binding domains.

Cellular localization Nucleus.

Images



All lanes : Anti-CSRP2/Dlp1 antibody [EPR13164] (ab178695) at 1/1000 dilution





Lane 1 : Human small intestine lysate

Lane 2 : Fetal kidney lysate

Lysates/proteins at 10 µg per lane.

Predicted band size: 21 kDa

Why choose a recombinant antibody?

 <p>Research with confidence Consistent and reproducible results</p>	 <p>Long-term and scalable supply Recombinant technology</p>
 <p>Success from the first experiment Confirmed specificity</p>	 <p>Ethical standards compliant Animal-free production</p>

Anti-CSR2/Dlp1 antibody [EPR13164] (ab178695)

Please note: All products are "FOR RESEARCH USE ONLY. NOT FOR USE IN DIAGNOSTIC PROCEDURES"

Our Abpromise to you: Quality guaranteed and expert technical support

- Replacement or refund for products not performing as stated on the datasheet
- Valid for 12 months from date of delivery
- Response to your inquiry within 24 hours
- We provide support in Chinese, English, French, German, Japanese and Spanish
- Extensive multi-media technical resources to help you
- We investigate all quality concerns to ensure our products perform to the highest standards

If the product does not perform as described on this datasheet, we will offer a refund or replacement. For full details of the Abpromise, please visit <https://www.abcam.com/abpromise> or contact our technical team.

Terms and conditions

- Guarantee only valid for products bought direct from Abcam or one of our authorized distributors