

Product datasheet

Anti-CTAG1B antibody [EPR13780] ab183740

Recombinant RabMAb

★★★★☆ 1 Abreviews 2 Images

Overview

Product name	Anti-CTAG1B antibody [EPR13780]
Description	Rabbit monoclonal [EPR13780] to CTAG1B
Host species	Rabbit
Specificity	The immunogen used for this product shares 85% homology with CTAG2/LAGE1. Cross-reactivity with this protein has not been confirmed experimentally.
Tested applications	Suitable for: IHC-P
Species reactivity	Reacts with: Human
Immunogen	Recombinant full length protein corresponding to Human CTAG1B aa 1 to the C-terminus. Database link: P78358
Positive control	Human melanoma and testis tissue.
General notes	

This product is a recombinant monoclonal antibody, which offers several advantages including:

- High batch-to-batch consistency and reproducibility
- Improved sensitivity and specificity
- Long-term security of supply
- Animal-free production

For more information [see here](#).

Our RabMAb[®] technology is a patented hybridoma-based technology for making rabbit monoclonal antibodies. For details on our patents, please refer to [RabMAb[®] patents](#).

Properties

Form	Liquid
Storage instructions	Shipped at 4°C. Store at +4°C short term (1-2 weeks). Upon delivery aliquot. Store at -20°C long term. Avoid freeze / thaw cycle.
Storage buffer	pH: 7.20 Preservative: 0.01% Sodium azide Constituents: 59% PBS, 40% Glycerol (glycerin, glycerine), 0.05% BSA

Purity	Protein A purified
Clonality	Monoclonal
Clone number	EPR13780
Isotype	IgG

Applications

Our [Abpromise guarantee](#) covers the use of **ab183740** in the following tested applications.

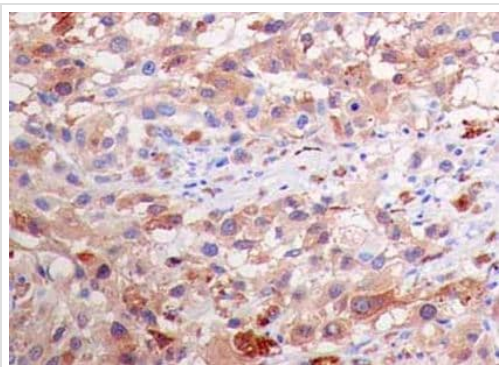
The application notes include recommended starting dilutions; optimal dilutions/concentrations should be determined by the end user.

Application	Abreviews	Notes
IHC-P	★★★★☆	1/2000 - 1/4000. Perform heat mediated antigen retrieval with Tris/EDTA buffer pH 9.0 before commencing with IHC staining protocol.

Target

Tissue specificity	Expressed in testis and ovary and in a wide variety of cancers. Detected in uterine myometrium. Expressed from 18 weeks until birth in human fetal testis. In the adult testis, is strongly expressed in spermatogonia and in primary spermatocytes, but not in post-meiotic cells or in testicular somatic cells (at protein level).
Sequence similarities	Belongs to the CTAG family.
Cellular localization	Cytoplasm.

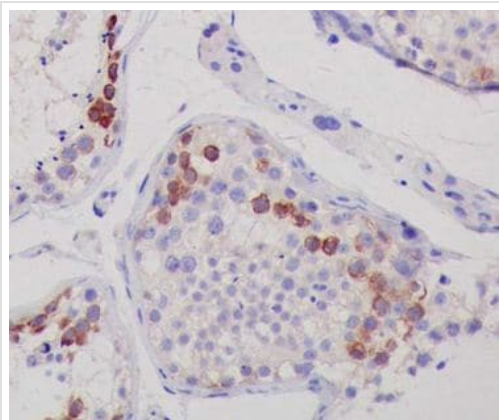
Images



Immunohistochemical analysis of paraffin-embedded Human melanoma tissue labeling CTAG1B with ab183740 at 1/4000 dilution. The slide is counterstained with Hematoxylin.

Perform heat mediated antigen retrieval with EDTA buffer pH 9 before commencing with IHC staining protocol.

Immunohistochemistry (Formalin/PFA-fixed paraffin-embedded sections) - Anti-CTAG1B antibody [EPR13780] (ab183740)



Immunohistochemistry (Formalin/PFA-fixed paraffin-embedded sections) - Anti-CTAG1B antibody [EPR13780] (ab183740)

Immunohistochemical analysis of paraffin-embedded Human testis tissue labeling CTAG1B with ab183740 at 1/4000 dilution. The slide is counterstained with Hematoxylin.

Perform heat mediated antigen retrieval with EDTA buffer pH 9 before commencing with IHC staining protocol.

Please note: All products are "FOR RESEARCH USE ONLY. NOT FOR USE IN DIAGNOSTIC PROCEDURES"

Our Abpromise to you: Quality guaranteed and expert technical support

- Replacement or refund for products not performing as stated on the datasheet
- Valid for 12 months from date of delivery
- Response to your inquiry within 24 hours
- We provide support in Chinese, English, French, German, Japanese and Spanish
- Extensive multi-media technical resources to help you
- We investigate all quality concerns to ensure our products perform to the highest standards

If the product does not perform as described on this datasheet, we will offer a refund or replacement. For full details of the Abpromise, please visit <https://www.abcam.com/abpromise> or contact our technical team.

Terms and conditions

- Guarantee only valid for products bought direct from Abcam or one of our authorized distributors