



Product datasheet

Anti-CTAGE5 antibody ab224218

2 Images

Overview

| | |
|----------------------------|---|
| Product name | Anti-CTAGE5 antibody |
| Description | Rabbit polyclonal to CTAGE5 |
| Host species | Rabbit |
| Tested applications | Suitable for: WB, IHC-P |
| Species reactivity | Reacts with: Human |
| Immunogen | <p>Recombinant fragment corresponding to Human CTAGE5 aa 118-227. Sequence:</p> <p>EKEATEAQSLEATCEKLNRSNSELEDEILCLEKELKEE KSKHSEQDELMA DISKRIQSLEDESKSLKSQVAEAKMTFKIFQMNEERLKI AIKDALNENSQ LQESQKQLLQ</p> <p>Database link: O15320</p> <p style="text-align: right;"> Run BLAST with  Run BLAST with</p> |
| Positive control | WB: RT4, U-251 MG sp and A431 cell lysates. IHC-P: Human hippocampus tissue. |

Properties

| | |
|-----------------------------|---|
| Form | Liquid |
| Storage instructions | Shipped at 4°C. Store at +4°C short term (1-2 weeks). Upon delivery aliquot. Store at -20°C long term. Avoid freeze / thaw cycle. |
| Storage buffer | <p>pH: 7.2 Preservative: 0.02% Sodium azide Constituents: 40% Glycerol, PBS</p> |
| Purity | Immunogen affinity purified |
| Clonality | Polyclonal |
| Isotype | IgG |

Applications

Our [Abpromise guarantee](#) covers the use of **ab224218** in the following tested applications.

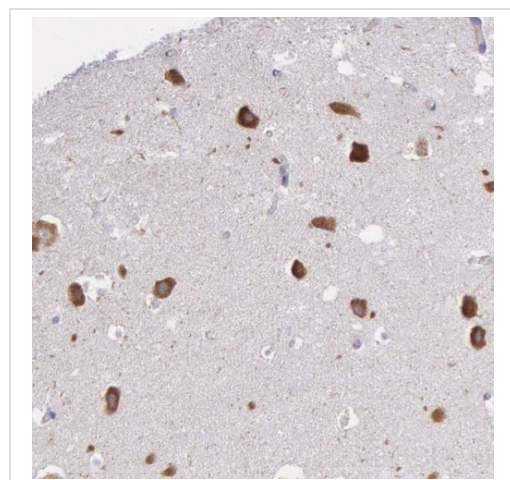
The application notes include recommended starting dilutions; optimal dilutions/concentrations should be determined by the end user.

| Application | Abreviews | Notes |
|-------------|-----------|---|
| WB | | 1/100 - 1/250. Predicted molecular weight: 91 kDa. |
| IHC-P | | 1/200 - 1/500. Perform heat mediated antigen retrieval with citrate buffer pH 6 before commencing with IHC staining protocol. |

Target

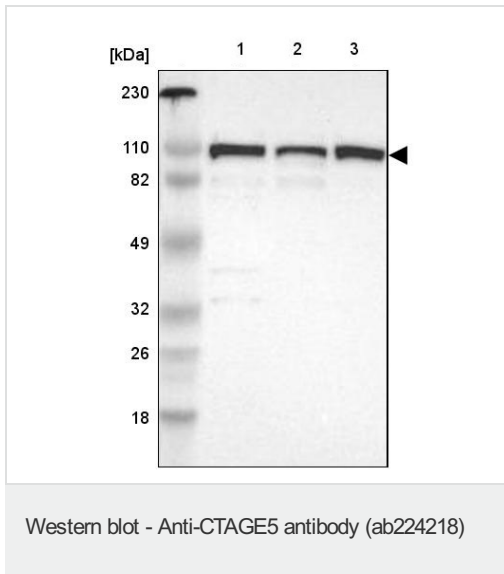
| | |
|-------------------------------|---|
| Function | Tumor-associated antigen. |
| Tissue specificity | Isoform 5A is expressed only in testis (at the protein level). Other isoforms are expressed in several other normal tissues, including brain, muscle and cranial skin. Isoform 5A (at protein level) and isoform 5B are expressed in cutaneous T-cell lymphoma (CTCL) cell lines, colorectal carcinomas, breast carcinomas and melanoma. Isoform 5B, but not isoform 5A, is expressed in head and neck squamous cell carcinoma. |
| Involvement in disease | Note=Autoantibodies against CTAGE5 are present in several cancer types, including benign meningioma and cutaneous T-cell lymphoma (CTCL). |
| Sequence similarities | Belongs to the cTAGE family. |

Images



Paraffin-embedded human hippocampus tissue stained for CTAGE5 using ab224218 at 1/200 dilution in immunohistochemical analysis.

Immunohistochemistry (Formalin/PFA-fixed paraffin-embedded sections) - Anti-CTAGE5 antibody (ab224218)



All lanes : Anti-CTAGE5 antibody (ab224218) at 1/100 dilution

Lane 1 : RT4 (human urinary bladder cancer cell line) cell lysate

Lane 2 : U-251 MG sp (human brain glioma cell line) cell lysate

Lane 3 : A431 (human epidermoid carcinoma cell line) cell lysate

Developed using the ECL technique.

Predicted band size: 91 kDa

Please note: All products are "FOR RESEARCH USE ONLY. NOT FOR USE IN DIAGNOSTIC PROCEDURES"

Our Abpromise to you: Quality guaranteed and expert technical support

- Replacement or refund for products not performing as stated on the datasheet
- Valid for 12 months from date of delivery
- Response to your inquiry within 24 hours
- We provide support in Chinese, English, French, German, Japanese and Spanish
- Extensive multi-media technical resources to help you
- We investigate all quality concerns to ensure our products perform to the highest standards

If the product does not perform as described on this datasheet, we will offer a refund or replacement. For full details of the Abpromise, please visit <https://www.abcam.com/abpromise> or contact our technical team.

Terms and conditions

- Guarantee only valid for products bought direct from Abcam or one of our authorized distributors