


## Product datasheet

# Anti-CTBP2 antibody - C-terminal ab190933

7 Images

### Overview

---

<b>Product name</b>	Anti-CTBP2 antibody - C-terminal
<b>Description</b>	Rabbit polyclonal to CTBP2 - C-terminal
<b>Host species</b>	Rabbit
<b>Tested applications</b>	<b>Suitable for:</b> IHC-Fr, WB, IHC-P, ICC
<b>Species reactivity</b>	<b>Reacts with:</b> Mouse, Rat, Human <b>Predicted to work with:</b> Cow 
<b>Immunogen</b>	Synthetic peptide corresponding to Human CTBP2 aa 429-445 (C terminal). Sequence: PNQPTKHGDNREHPNEQ  Database link: <a href="#">P56545</a>  <a href="#">Run BLAST with</a> <a href="#">Run BLAST with</a>

### General notes

Reproducibility is key to advancing scientific discovery and accelerating scientists' next breakthrough.

Abcam is leading the way with our range of recombinant antibodies, knockout-validated antibodies and knockout cell lines, all of which support improved reproducibility.

We are also planning to innovate the way in which we present recommended applications and species on our product datasheets, so that only applications & species that have been tested in our own labs, our suppliers or by selected trusted collaborators are covered by our Abpromise™ guarantee.

In preparation for this, we have started to update the applications & species that this product is Abpromise guaranteed for.

We are also updating the applications & species that this product has been “predicted to work with,” however this information is not covered by our Abpromise guarantee.

Applications & species from publications and Abreviews that have not been tested in our own labs or in those of our suppliers are not covered by the Abpromise guarantee.

Please check that this product meets your needs before purchasing. If you have any questions, special requirements or concerns, please send us an inquiry and/or contact our Support team ahead of purchase. Recommended alternatives for this product can be found below, as well as customer reviews and Q&As.

## Properties

---

<b>Form</b>	Liquid
<b>Storage instructions</b>	Shipped at 4°C. Store at +4°C short term (1-2 weeks). Upon delivery aliquot. Store at -20°C long term. Avoid freeze / thaw cycle.
<b>Storage buffer</b>	Preservatives: 0.025% Thimerosal (merthiolate), 0.025% Sodium azide Constituents: 2.5% BSA, 0.45% Sodium chloride, 0.1% Sodium phosphate
<b>Purity</b>	Immunogen affinity purified
<b>Clonality</b>	Polyclonal
<b>Isotype</b>	IgG

## Applications

---

Our [Abpromise guarantee](#) covers the use of **ab190933** in the following tested applications.

The application notes include recommended starting dilutions; optimal dilutions/concentrations should be determined by the end user.

Application	Abreviews	Notes
IHC-Fr		Use a concentration of 0.5 - 1 µg/ml.
WB		Use a concentration of 0.1 - 0.5 µg/ml. Predicted molecular weight: 49 kDa.
IHC-P		Use a concentration of 0.5 - 1 µg/ml. Perform heat mediated antigen retrieval with citrate buffer pH 6 before commencing with IHC staining protocol.
ICC		Use a concentration of 0.5 - 1 µg/ml.

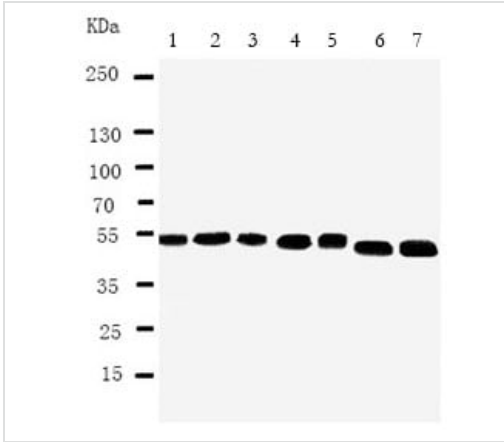
## Target

---

<b>Function</b>	Corepressor targeting diverse transcription regulators. Functions in brown adipose tissue (BAT) differentiation. Isoform 2 probably acts as a scaffold for specialized synapses.
<b>Tissue specificity</b>	Ubiquitous. Highest levels in heart, skeletal muscle, and pancreas.
<b>Sequence similarities</b>	Belongs to the D-isomer specific 2-hydroxyacid dehydrogenase family.
<b>Post-translational modifications</b>	Isoform 2 is phosphorylated upon DNA damage, probably by ATM or ATR at Thr-179; Ser-181 and Ser-185. Phosphorylation by HIPK2 on Ser-428 induces proteasomal degradation.
<b>Cellular localization</b>	Nucleus. Cell junction > synapse.

## Images

---

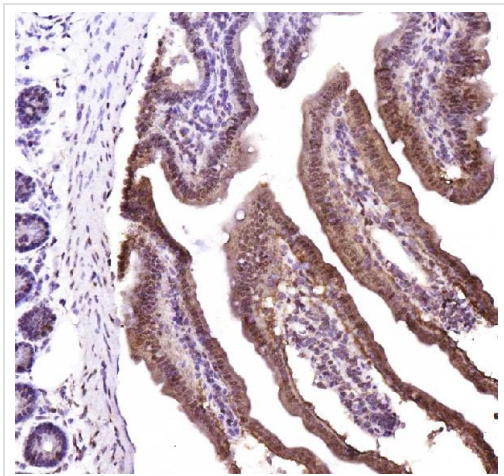


Western blot - Anti-CTBP2 antibody - C-terminal (ab190933)

**All lanes :** Anti-CTBP2 antibody - C-terminal (ab190933) at 0.5  $\mu\text{g/ml}$

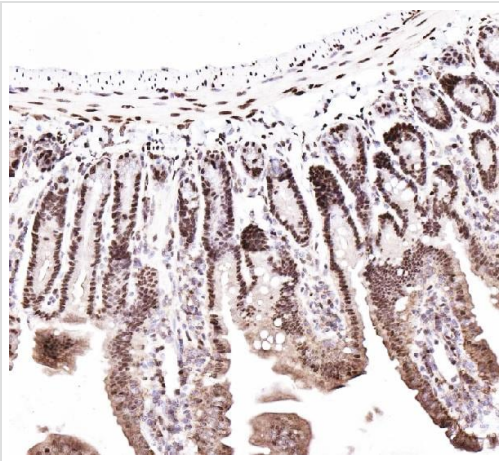
- Lane 1 :** Rat brain tissue lysate
- Lane 2 :** Rat spleen tissue lysate
- Lane 3 :** HeLa cell lysate
- Lane 4 :** 293T cell lysate
- Lane 5 :** COLO320 cell lysate
- Lane 6 :** U87 cell lysate
- Lane 7 :** SW620 cell lysate

**Predicted band size:** 49 kDa



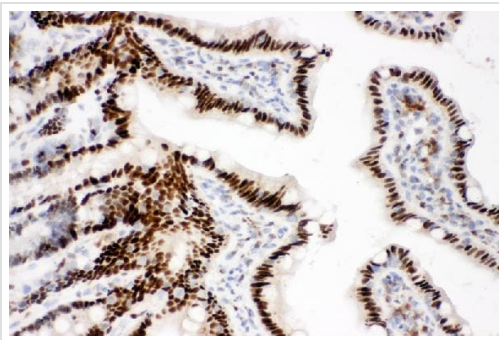
Immunohistochemistry (Frozen sections) - Anti-CTBP2 antibody - C-terminal (ab190933)

CTBP2 was detected in frozen section of mouse intestine tissues. The tissue section was blocked with 10% goat serum. The tissue section was then incubated with 1  $\mu\text{g/ml}$  ab190933 overnight at 4°C. Biotinylated goat anti-rabbit IgG was used as secondary antibody and incubated for 30 minutes at 37°C. The tissue section was developed using Streptavidin-Biotin-Complex with DAB as the chromogen.



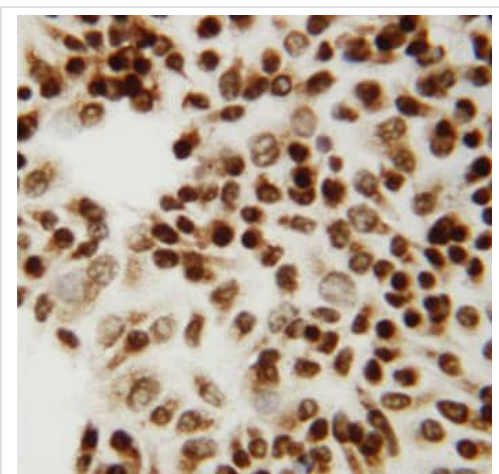
Immunohistochemistry (Formalin/PFA-fixed paraffin-embedded sections) - Anti-CTBP2 antibody - C-terminal (ab190933)

CTBP2 was detected in paraffin-embedded section of mouse intestine tissues. Heat mediated antigen retrieval was performed in citrate buffer (pH6, epitope retrieval solution) for 20 mins. The tissue section was blocked with 10% goat serum. The tissue section was then incubated with 1 µg/ml ab190933 overnight at 4°C. Biotinylated goat anti-rabbit IgG was used as secondary antibody and incubated for 30 minutes at 37°C. The tissue section was developed using Streptavidin-Biotin-Complex with DAB as the chromogen.



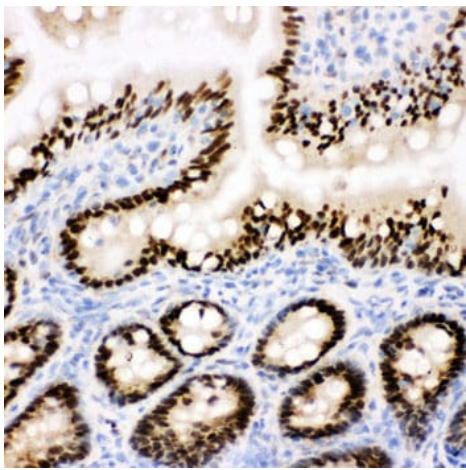
Immunohistochemistry (Formalin/PFA-fixed paraffin-embedded sections) - Anti-CTBP2 antibody - C-terminal (ab190933)

CTBP2 was detected in paraffin-embedded section of rat intestine tissues. Heat mediated antigen retrieval was performed in citrate buffer (pH6, epitope retrieval solution) for 20 mins. The tissue section was blocked with 10% goat serum. The tissue section was then incubated with 1 µg/ml ab190933 overnight at 4°C. Biotinylated goat anti-rabbit IgG was used as secondary antibody and incubated for 30 minutes at 37°C. The tissue section was developed using Streptavidin-Biotin-Complex with DAB as the chromogen.



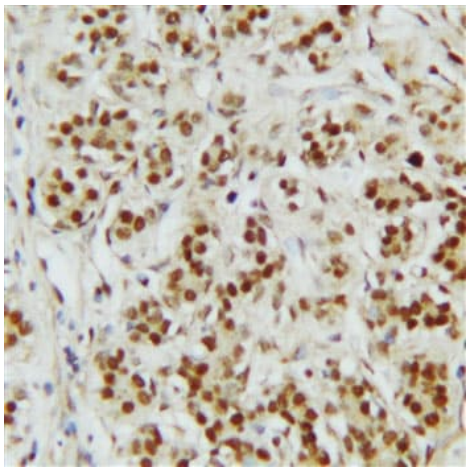
Immunocytochemistry - Anti-CTBP2 antibody - C-terminal (ab190933)

CTBP2 was detected in immunocytochemical section of human Hela cell. Enzyme antigen retrieval was performed using IHC enzyme antigen retrieval reagent for 15 mins. The cells were blocked with 10% goat serum. And then incubated with 1 µg/ml ab190933 overnight at 4°C. Biotinylated goat anti-rabbit IgG was used as secondary antibody and incubated for 30 minutes at 37°C. The section was developed using Streptavidin-Biotin-Complex with DAB as the chromogen.



Immunohistochemistry (Frozen sections) - Anti-CTBP2 antibody - C-terminal (ab190933)

CTBP2 was detected in frozen section of rat intestine tissue. The tissue section was blocked with 10% goat serum. The tissue section was then incubated with 1µg/ml ab190933 overnight at 4°C. Biotinylated goat anti-rabbit IgG was used as secondary antibody and incubated for 30 minutes at 37°C. The tissue section was developed using Streptavidin-Biotin-Complex with DAB as the chromogen.



Immunohistochemistry (Formalin/PFA-fixed paraffin-embedded sections) - Anti-CTBP2 antibody - C-terminal (ab190933)

CTBP2 was detected in paraffin-embedded section of human mammary cancer tissues. Heat mediated antigen retrieval was performed in citrate buffer (pH6, epitope retrieval solution) for 20 mins. The tissue section was blocked with 10% goat serum. The tissue section was then incubated with 1µg/ml ab190933 overnight at 4°C. Biotinylated goat anti-rabbit IgG was used as secondary antibody and incubated for 30 minutes at 37°C. The tissue section was developed using Streptavidin-Biotin-Complex with DAB as the chromogen.

**Please note:** All products are "FOR RESEARCH USE ONLY. NOT FOR USE IN DIAGNOSTIC PROCEDURES"

### **Our Abpromise to you: Quality guaranteed and expert technical support**

- Replacement or refund for products not performing as stated on the datasheet
- Valid for 12 months from date of delivery
- Response to your inquiry within 24 hours
- We provide support in Chinese, English, French, German, Japanese and Spanish
- Extensive multi-media technical resources to help you
- We investigate all quality concerns to ensure our products perform to the highest standards

If the product does not perform as described on this datasheet, we will offer a refund or replacement. For full details of the Abpromise,

please visit <https://www.abcam.com/abpromise> or contact our technical team.

## **Terms and conditions**

---

- Guarantee only valid for products bought direct from Abcam or one of our authorized distributors