

Product datasheet

Anti-CTGF antibody ab227180

[2 References](#) [3 Images](#)

Overview

Product name	Anti-CTGF antibody
Description	Rabbit polyclonal to CTGF
Host species	Rabbit
Tested applications	Suitable for: IHC-P, WB
Species reactivity	Reacts with: Mouse, Rat, Human
Immunogen	Synthetic peptide within Human CTGF aa 200-250 conjugated to keyhole limpet haemocyanin. The exact sequence is proprietary. Database link: P29279
Positive control	WB: Mouse lung lysate. IHC-P: Human laryngeal cancer tissue; Rat heart tissue.
General notes	<p>Reproducibility is key to advancing scientific discovery and accelerating scientists' next breakthrough.</p> <p>Abcam is leading the way with our range of recombinant antibodies, knockout-validated antibodies and knockout cell lines, all of which support improved reproducibility.</p> <p>We are also planning to innovate the way in which we present recommended applications and species on our product datasheets, so that only applications & species that have been tested in our own labs, our suppliers or by selected trusted collaborators are covered by our Abpromise™ guarantee.</p> <p>In preparation for this, we have started to update the applications & species that this product is Abpromise guaranteed for.</p> <p>We are also updating the applications & species that this product has been "predicted to work with," however this information is not covered by our Abpromise guarantee.</p> <p>Applications & species from publications and Abreviews that have not been tested in our own labs or in those of our suppliers are not covered by the Abpromise guarantee.</p> <p>Please check that this product meets your needs before purchasing. If you have any questions, special requirements or concerns, please send us an inquiry and/or contact our Support team ahead of purchase. Recommended alternatives for this product can be found below, as well as customer reviews and Q&As.</p>

Properties

Form	Liquid
-------------	--------

Storage instructions	Shipped at 4°C. Store at +4°C short term (1-2 weeks). Upon delivery aliquot. Store at -20°C. Avoid freeze / thaw cycle.
Storage buffer	Preservative: 0.09% Sodium azide Constituents: 1% BSA, 50% Glycerol
	Aqueous buffered solution
Purity	Protein A purified
Clonality	Polyclonal
Isotype	IgG

Applications

Our [Abpromise guarantee](#) covers the use of **ab227180** in the following tested applications.

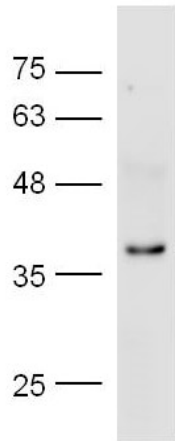
The application notes include recommended starting dilutions; optimal dilutions/concentrations should be determined by the end user.

Application	Abreviews	Notes
IHC-P		1/100 - 1/500.
WB		1/100 - 1/1000. Predicted molecular weight: 38 kDa.

Target

Function	Major connective tissue mitogen secreted by vascular endothelial cells. Promotes proliferation and differentiation of chondrocytes. Mediates heparin- and divalent cation-dependent cell adhesion in many cell types including fibroblasts, myofibroblasts, endothelial and epithelial cells. Enhances fibroblast growth factor-induced DNA synthesis.
Tissue specificity	Expressed in bone marrow and thymic cells. Also expressed one of two Wilms tumors tested.
Sequence similarities	Belongs to the CCN family. Contains 1 CTCK (C-terminal cystine knot-like) domain. Contains 1 IGFBP N-terminal domain. Contains 1 TSP type-1 domain. Contains 1 VWFC domain.
Cellular localization	Secreted > extracellular space > extracellular matrix. Secreted.

Images



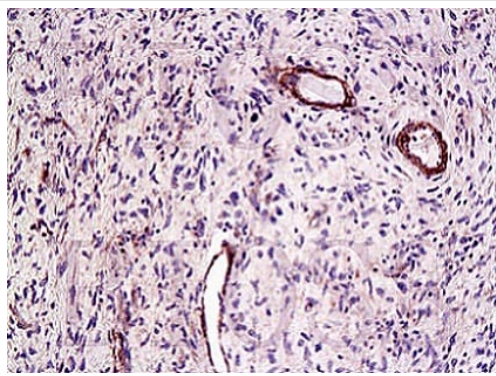
Western blot - Anti-CTGF antibody (ab227180)

Anti-CTGF antibody (ab227180) at 1/300 dilution + Mouse lung lysate

Secondary

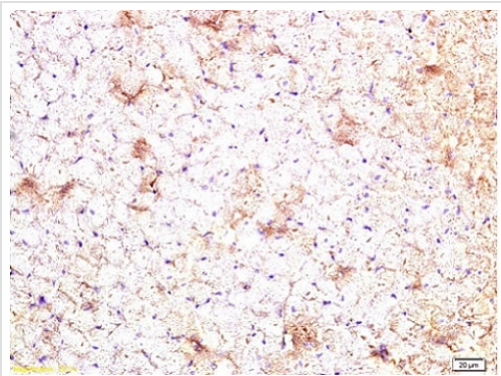
Goat Anti-Rabbit IgG (H+L), HRP conjugated at 1/5000 dilution

Predicted band size: 38 kDa



Immunohistochemistry (Formalin/PFA-fixed paraffin-embedded sections) - Anti-CTGF antibody (ab227180)

Formalin-fixed, paraffin-embedded human laryngeal cancer tissue stained for CTGF using ab227180 at 1/200 dilution in immunohistochemical analysis, followed by conjugation to the secondary antibody and DAB staining.



Immunohistochemistry (Formalin/PFA-fixed paraffin-embedded sections) - Anti-CTGF antibody (ab227180)

Formalin-fixed, paraffin-embedded rat heart tissue stained for CTGF using ab227180 at 1/200 dilution in immunohistochemical analysis, followed by conjugation to the secondary antibody and DAB staining.

Please note: All products are "FOR RESEARCH USE ONLY. NOT FOR USE IN DIAGNOSTIC PROCEDURES"

Our Abpromise to you: Quality guaranteed and expert technical support

- Replacement or refund for products not performing as stated on the datasheet
- Valid for 12 months from date of delivery
- Response to your inquiry within 24 hours
- We provide support in Chinese, English, French, German, Japanese and Spanish
- Extensive multi-media technical resources to help you
- We investigate all quality concerns to ensure our products perform to the highest standards

If the product does not perform as described on this datasheet, we will offer a refund or replacement. For full details of the Abpromise, please visit <https://www.abcam.com/abpromise> or contact our technical team.

Terms and conditions

- Guarantee only valid for products bought direct from Abcam or one of our authorized distributors