


Product datasheet

Anti-CTHRC1 antibody ab85739

★★★★★ 2 Abreviews 10 References 4 Images

Overview

Product name	Anti-CTHRC1 antibody
Description	Rabbit polyclonal to CTHRC1
Host species	Rabbit
Tested applications	Suitable for: WB, IHC-P, ICC/IF
Species reactivity	Reacts with: Mouse, Human Predicted to work with: Rat, Cow 
Immunogen	Synthetic peptide corresponding to Human CTHRC1 aa 150 to the C-terminus conjugated to keyhole limpet haemocyanin. (Peptide available as ab101727)
General notes	<p>Reproducibility is key to advancing scientific discovery and accelerating scientists' next breakthrough.</p> <p>Abcam is leading the way with our range of recombinant antibodies, knockout-validated antibodies and knockout cell lines, all of which support improved reproducibility.</p> <p>We are also planning to innovate the way in which we present recommended applications and species on our product datasheets, so that only applications & species that have been tested in our own labs, our suppliers or by selected trusted collaborators are covered by our Abpromise™ guarantee.</p> <p>In preparation for this, we have started to update the applications & species that this product is Abpromise guaranteed for.</p> <p>We are also updating the applications & species that this product has been “predicted to work with,” however this information is not covered by our Abpromise guarantee.</p> <p>Applications & species from publications and Abreviews that have not been tested in our own labs or in those of our suppliers are not covered by the Abpromise guarantee.</p> <p>Please check that this product meets your needs before purchasing. If you have any questions, special requirements or concerns, please send us an inquiry and/or contact our Support team ahead of purchase. Recommended alternatives for this product can be found below, as well as customer reviews and Q&As.</p>

Properties

Form	Liquid
-------------	--------

Storage instructions	Shipped at 4°C. Store at +4°C short term (1-2 weeks). Upon delivery aliquot. Store at -20°C or -80°C. Avoid freeze / thaw cycle.
Storage buffer	pH: 7.40 Preservative: 0.02% Sodium azide Constituent: PBS
	Batches of this product that have a concentration < 1mg/ml may have BSA added as a stabilising agent. If you would like information about the formulation of a specific lot, please contact our scientific support team who will be happy to help.
Purity	Immunogen affinity purified
Clonality	Polyclonal
Isotype	IgG

Applications

Our [Abpromise guarantee](#) covers the use of **ab85739** in the following tested applications.

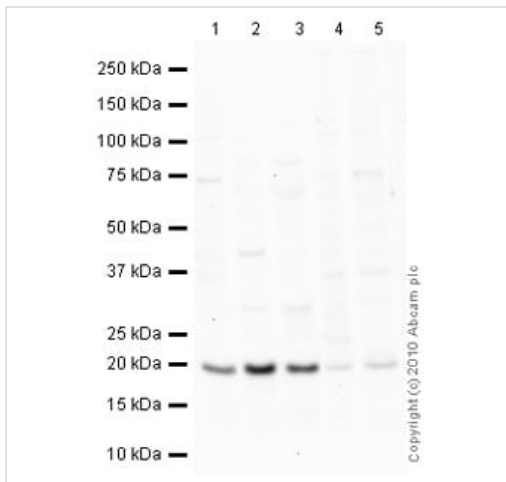
The application notes include recommended starting dilutions; optimal dilutions/concentrations should be determined by the end user.

Application	Abreviews	Notes
WB	★★★★★	Use a concentration of 1 µg/ml. Detects a band of approximately 20 kDa (predicted molecular weight: 26 kDa).
IHC-P		Use a concentration of 5 µg/ml. Perform heat mediated antigen retrieval with citrate buffer pH 6 before commencing with IHC staining protocol.
ICC/IF		Use a concentration of 5 µg/ml.

Target

Function	May act as a negative regulator of collagen matrix deposition.
Tissue specificity	Isoform 1 is expressed in calcified atherosclerotic plaque and chondrocyte-like cells.
Sequence similarities	Contains 1 collagen-like domain.
Post-translational modifications	N-glycosylated.
Cellular localization	Secreted > extracellular space > extracellular matrix.

Images



Western blot - Anti-CTHRC1 antibody (ab85739)

All lanes : Anti-CTHRC1 antibody (ab85739) at 1 µg/ml

Lane 1 : Human brain tissue lysate - total protein (ab29466)

Lane 2 : Human heart tissue lysate - total protein (ab29431)

Lane 3 : Human blood vessel: artery normal tissue lysate - membrane extract (ab28989)

Lane 4 : HepG2 (Human hepatocellular liver carcinoma cell line) Whole Cell Lysate

Lane 5 : HEK293 (Human embryonic kidney cell line) Whole Cell Lysate

Lysates/proteins at 10 µg per lane.

Secondary

All lanes : Goat polyclonal Secondary Antibody to Rabbit IgG - H&L (HRP), pre-adsorbed at 1/5000 dilution

Developed using the ECL technique.

Performed under reducing conditions.

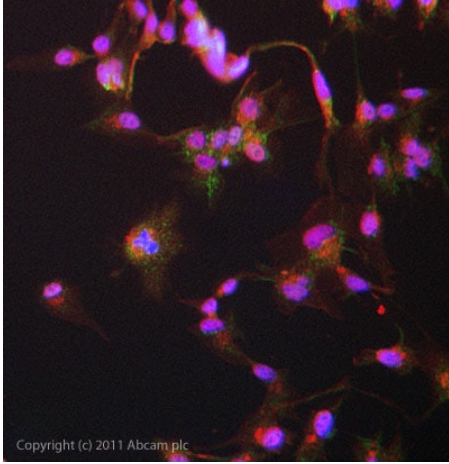
Predicted band size: 26 kDa

Observed band size: 20 kDa

[why is the actual band size different from the predicted?](#)

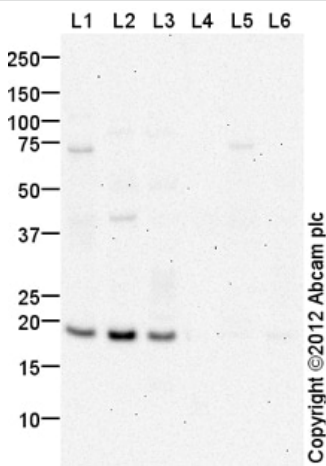
Exposure time: 10 minutes

We predict that the 20 kDa band represents the cleaved form of CTHRC1. Abcam welcomes customer feedback.



Immunocytochemistry/ Immunofluorescence - Anti-CTHRC1 antibody (ab85739)

ICC/IF image of ab85739 stained HepG2 cells. The cells were 4% PFA fixed (10 min) and then incubated in 1%BSA / 10% normal goat serum / 0.3M glycine in 0.1% PBS-Tween for 1h to permeabilise the cells and block non-specific protein-protein interactions. The cells were then incubated with the antibody (ab85739, 5µg/ml) overnight at +4°C. The secondary antibody (green) was [ab96899](#) Dylight 488 goat anti-rabbit IgG (H+L) used at a 1/250 dilution for 1h. Alexa Fluor® 594 WGA was used to label plasma membranes (red) at a 1/200 dilution for 1h. DAPI was used to stain the cell nuclei (blue) at a concentration of 1.43µM.



Western blot - Anti-CTHRC1 antibody (ab85739)

All lanes : Anti-CTHRC1 antibody (ab85739) at 1 µg/ml

Lane 1 : Human brain tissue lysate - total protein ([ab29466](#))

Lane 2 : Human heart tissue lysate - total protein ([ab29431](#))

Lane 3 : Human blood vessel: artery normal tissue lysate - membrane extract ([ab28989](#))

Lane 4 : Human brain tissue lysate - total protein ([ab29466](#)) with Human CTHRC1 peptide ([ab101727](#)) at 1 µg/ml

Lane 5 : Human heart tissue lysate - total protein ([ab29431](#)) with Human CTHRC1 peptide ([ab101727](#)) at 1 µg/ml

Lane 6 : Human blood vessel: artery normal tissue lysate - membrane extract ([ab28989](#)) with Human CTHRC1 peptide ([ab101727](#)) at 1 µg/ml

Lysates/proteins at 10 µg per lane.

Secondary

All lanes : Goat polyclonal Secondary Antibody to Rabbit IgG - H&L (HRP), pre-adsorbed at 1/5000 dilution

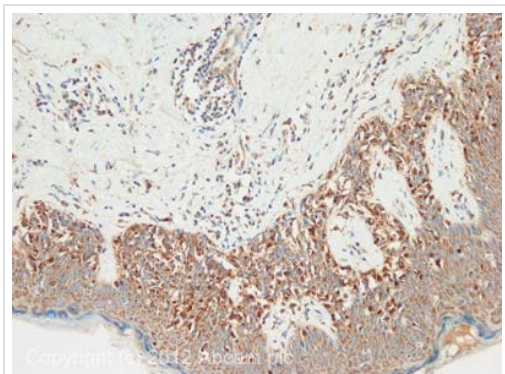
Developed using the ECL technique.

Performed under reducing conditions.

Predicted band size: 26 kDa

Observed band size: 20 kDa [why is the actual band size different from the predicted?](#)

Exposure time: 20 minutes



Immunohistochemistry (Formalin/PFA-fixed paraffin-embedded sections) - Anti-CTHRC1 antibody (ab85739)

IHC image of CTHRC1 staining in human skin melanoma formalin fixed paraffin embedded tissue section, performed on a Leica Bond™ system using the standard protocol F. The section was pre-treated using heat mediated antigen retrieval with sodium citrate buffer (pH6, epitope retrieval solution 1) for 20 mins. The section was then incubated with ab85739, 5µg/ml, for 15 mins at room temperature and detected using an HRP conjugated compact polymer system. DAB was used as the chromogen. The section was then counterstained with haematoxylin and mounted with DPX.

For other IHC staining systems (automated and non-automated) customers should optimize variable parameters such as antigen retrieval conditions, primary antibody concentration and antibody incubation times.

Please note: All products are "FOR RESEARCH USE ONLY. NOT FOR USE IN DIAGNOSTIC PROCEDURES"

Our Abpromise to you: Quality guaranteed and expert technical support

- Replacement or refund for products not performing as stated on the datasheet
- Valid for 12 months from date of delivery
- Response to your inquiry within 24 hours
- We provide support in Chinese, English, French, German, Japanese and Spanish
- Extensive multi-media technical resources to help you
- We investigate all quality concerns to ensure our products perform to the highest standards

If the product does not perform as described on this datasheet, we will offer a refund or replacement. For full details of the Abpromise, please visit <https://www.abcam.com/abpromise> or contact our technical team.

Terms and conditions

- Guarantee only valid for products bought direct from Abcam or one of our authorized distributors