

Product datasheet

Anti-Ctk1 antibody ab47812

1 Image

Overview

Product name	Anti-Ctk1 antibody
Description	Rabbit polyclonal to Ctk1
Host species	Rabbit
Tested applications	Suitable for: WB
Species reactivity	Reacts with: Saccharomyces cerevisiae
Immunogen	Synthetic peptide corresponding to Saccharomyces cerevisiae Ctk1 aa 1-100 conjugated to keyhole limpet haemocyanin. (Peptide available as ab32250 , ab32251)
Positive control	This antibody gave a positive signal in S.cerevisiae (Y190) Whole Cell Lysate
General notes	<p>The Life Science industry has been in the grips of a reproducibility crisis for a number of years. Abcam is leading the way in addressing this with our range of recombinant monoclonal antibodies and knockout edited cell lines for gold-standard validation. Please check that this product meets your needs before purchasing.</p> <p>If you have any questions, special requirements or concerns, please send us an inquiry and/or contact our Support team ahead of purchase. Recommended alternatives for this product can be found below, along with publications, customer reviews and Q&As</p>

Properties

Form	Liquid
Storage instructions	Shipped at 4°C. Store at +4°C short term (1-2 weeks). Upon delivery aliquot. Store at -20°C or -80°C. Avoid freeze / thaw cycle.
Storage buffer	<p>pH: 7.40</p> <p>Preservative: 0.02% Sodium azide</p> <p>Constituent: PBS</p> <p>Batches of this product that have a concentration < 1mg/ml may have BSA added as a stabilising agent. If you would like information about the formulation of a specific lot, please contact our scientific support team who will be happy to help.</p>
Purity	Immunogen affinity purified
Clonality	Polyclonal

Isotype

IgG

Applications

The Abpromise guarantee

Our [Abpromise guarantee](#) covers the use of ab47812 in the following tested applications.

The application notes include recommended starting dilutions; optimal dilutions/concentrations should be determined by the end user.

Application	Abreviews	Notes
WB		Use a concentration of 1 µg/ml. Detects a band of approximately 58 kDa (predicted molecular weight: 60 kDa).

Target

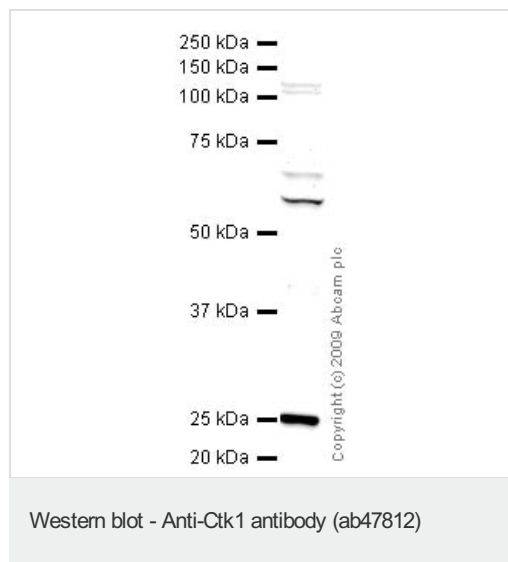
Relevance

Ctk1 is the catalytic subunit of CTDK-1 that hyperphosphorylates the C-terminal repeat domain (CTD) of RNA polymerase II largest subunit. CTDK-I is localized to the nucleolus. Ctk1 also co-precipitates with RNA polymerase I co-indicating a direct interaction between RNA polymerase I and Ctk1. Therefore, CTDK-I appears to play a role regulating distinct nuclear transcriptional machineries.

Cellular localization

Nuclear

Images



Anti-Ctk1 antibody (ab47812) at 1 µg/ml + *S.cerevisiae* (Y190)
Whole Cell Lysate at 10 µg

Secondary

Goat polyclonal to Rabbit IgG - H&L - Pre-Adsorbed (HRP) at
1/3000 dilution

Performed under reducing conditions.

Predicted band size: 60 kDa

Observed band size: 58 kDa

Additional bands at: 110 kDa, 120 kDa, 25 kDa, 65 kDa. We are unsure as to the identity of these extra bands.

Exposure time: 8 minutes

Please note: All products are "FOR RESEARCH USE ONLY. NOT FOR USE IN DIAGNOSTIC PROCEDURES"

Our Abpromise to you: Quality guaranteed and expert technical support

-
- Replacement or refund for products not performing as stated on the datasheet
 - Valid for 12 months from date of delivery
 - Response to your inquiry within 24 hours

 - We provide support in Chinese, English, French, German, Japanese and Spanish
 - Extensive multi-media technical resources to help you
 - We investigate all quality concerns to ensure our products perform to the highest standards

If the product does not perform as described on this datasheet, we will offer a refund or replacement. For full details of the Abpromise, please visit <https://www.abcam.com/abpromise> or contact our technical team.

Terms and conditions

- Guarantee only valid for products bought direct from Abcam or one of our authorized distributors