

## Product datasheet

# Anti-CTRB1 antibody ab86177

★★★★★ 1 Abreviews 1 Image

### Overview

<b>Product name</b>	Anti-CTRB1 antibody
<b>Description</b>	Rabbit polyclonal to CTRB1
<b>Host species</b>	Rabbit
<b>Specificity</b>	ab86177 recognizes both forms of this proteolytic enzyme.
<b>Tested applications</b>	<b>Suitable for:</b> WB
<b>Species reactivity</b>	<b>Reacts with:</b> Mouse, Human <b>Predicted to work with:</b> Rat, Rabbit, Horse, Chicken, Guinea pig, Cow, Cat, Dog, Pig
<b>Immunogen</b>	Synthetic peptide from within a region of internal sequence amino acids 107-156 (KNPKFSILTV NNDITLLKLA TPARFSQTVS AVCLPSADDD FPAGTLCATT) of Human CTRB1 (NP_001897) <a href="#">Run BLAST with ExPASy</a> <a href="#">Run BLAST with NCBI</a>
<b>Positive control</b>	Human fetal muscle lysate

### Properties

<b>Form</b>	Liquid
<b>Storage instructions</b>	Shipped at 4°C. Upon delivery aliquot and store at -20°C. Avoid repeated freeze / thaw cycles.
<b>Storage buffer</b>	Preservative: 0.09% Sodium azide Constituents: PBS, 2% Sucrose
<b>Purity</b>	Immunogen affinity purified
<b>Clonality</b>	Polyclonal
<b>Isotype</b>	IgG

### Applications

Our [Abpromise guarantee](#) covers the use of **ab86177** in the following tested applications.

The application notes include recommended starting dilutions; optimal dilutions/concentrations should be determined by the end user.

Application	Abreviews	Notes

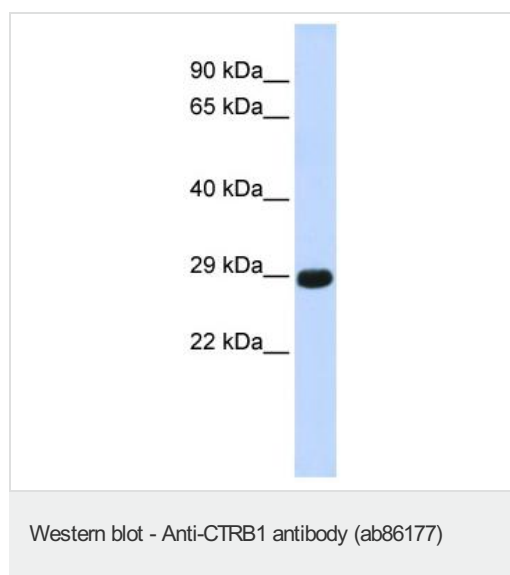
Application	Abreviews	Notes
WB	★★★★★	Use a concentration of 1 µg/ml. Predicted molecular weight: 28 kDa. Good results were obtained when blocked with 5% non-fat dry milk in 0.05% PBS-T.

## Target

**Relevance** CTRB1 (Chymotrypsinogen B1) is the inactive precursor of Alpha chymotrypsin, one of a family of serine proteases secreted into the gastrointestinal tract. The zymogen is activated by proteolytic cleavage by trypsin.

**Cellular localization** Secreted, extracellular space.

## Images



Anti-CTRB1 antibody (ab86177) at 1 µg/ml (5% skim milk/ PBS buffer) + fetal muscle lysate at 10 µg

### Secondary

HRP conjugated anti-Rabbit IgG at 1/50000 dilution

**Predicted band size:** 28 kDa

Gel concentration: 12%

**Please note:** All products are "FOR RESEARCH USE ONLY. NOT FOR USE IN DIAGNOSTIC PROCEDURES"

## Our Abpromise to you: Quality guaranteed and expert technical support

- Replacement or refund for products not performing as stated on the datasheet
- Valid for 12 months from date of delivery
- Response to your inquiry within 24 hours
- We provide support in Chinese, English, French, German, Japanese and Spanish
- Extensive multi-media technical resources to help you
- We investigate all quality concerns to ensure our products perform to the highest standards

If the product does not perform as described on this datasheet, we will offer a refund or replacement. For full details of the Abpromise, please visit <https://www.abcam.com/abpromise> or contact our technical team.

## Terms and conditions

---

- Guarantee only valid for products bought direct from Abcam or one of our authorized distributors