

Product datasheet

Anti-CTRP5 antibody ab36893

★★★★★ 3 Abreviews 3 Images

Overview

Product name	Anti-CTRP5 antibody
Description	Rabbit polyclonal to CTRP5
Host species	Rabbit
Tested applications	Suitable for: WB, IHC-P
Species reactivity	Reacts with: Rat, Human
Immunogen	A 15 amino acid peptide from near the amino terminus of human CTRP5.
Positive control	Human brain cell lysate.
General notes	<p>Reproducibility is key to advancing scientific discovery and accelerating scientists' next breakthrough.</p> <p>Abcam is leading the way with our range of recombinant antibodies, knockout-validated antibodies and knockout cell lines, all of which support improved reproducibility.</p> <p>We are also planning to innovate the way in which we present recommended applications and species on our product datasheets, so that only applications & species that have been tested in our own labs, our suppliers or by selected trusted collaborators are covered by our Abpromise™ guarantee.</p> <p>In preparation for this, we have started to update the applications & species that this product is Abpromise guaranteed for.</p> <p>We are also updating the applications & species that this product has been “predicted to work with,” however this information is not covered by our Abpromise guarantee.</p> <p>Applications & species from publications and Abreviews that have not been tested in our own labs or in those of our suppliers are not covered by the Abpromise guarantee.</p> <p>Please check that this product meets your needs before purchasing. If you have any questions, special requirements or concerns, please send us an inquiry and/or contact our Support team ahead of purchase. Recommended alternatives for this product can be found below, as well as customer reviews and Q&As.</p>

Properties

Form	Liquid
Storage instructions	Shipped at 4°C. Store at +4°C.

Storage buffer	pH: 7.2 Preservative: 0.02% Sodium azide Constituent: PBS
Purity	Immunogen affinity purified
Clonality	Polyclonal
Isotype	IgG

Applications

Our [Abpromise guarantee](#) covers the use of **ab36893** in the following tested applications.

The application notes include recommended starting dilutions; optimal dilutions/concentrations should be determined by the end user.

Application	Abreviews	Notes
WB		Use a concentration of 1 - 4 µg/ml. Detects a band of approximately 39 kDa (predicted molecular weight: 25 kDa).
IHC-P	★★★★★	Use a concentration of 10 µg/ml.

Target

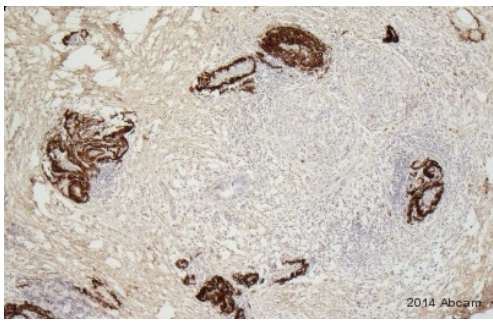
Relevance

Adipose tissue of an organism plays a major role in regulating physiologic and pathologic processes such as metabolism and immunity by producing and secreting a variety of bioactive molecules termed adipokines. One highly conserved family of adipokines is adiponectin/ACRP30 and its structural and functional paralogs, the C1q/tumor necrosis factor- α -related proteins (CTRPs) 1-7. Unlike adiponectin, which is expressed exclusively by differentiated adipocytes, the CTRPs are expressed in a wide variety of tissues. These proteins are thought to act mainly on liver and muscle tissue to control glucose and lipid metabolism. An analysis of the crystal structure of adiponectin revealed a structural and evolutionary link between TNF and C1q-containing proteins, suggesting that these proteins arose from a common ancestral innate immunity gene. CTRP5 has been suggested to be involved in age-related macular degeneration.

Cellular localization

Secreted

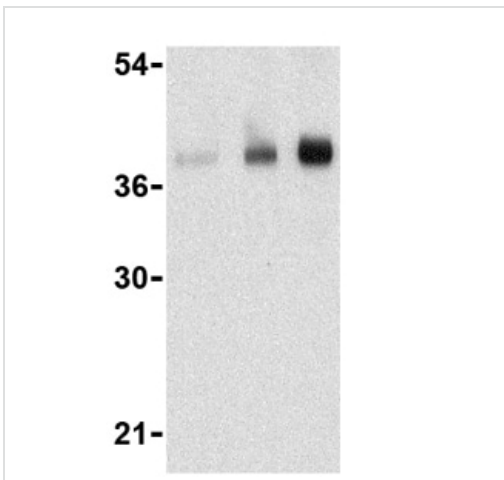
Images



Immunohistochemistry (Formalin/PFA-fixed paraffin-embedded sections) - Anti-CTRP5 antibody (ab36893)

This image is courtesy of an Abreview submitted by Steffen Rickelt

ab36893 staining CTRP5 in human pancreas carcinoma tissue sections by Immunohistochemistry (IHC-P - paraformaldehyde-fixed, paraffin-embedded sections). Tissue was fixed with formaldehyde, permeabilized with 0.2% Triton X-100 in PBS and blocked with 5% milk for 30 minutes at room temperature; antigen retrieval was by heat mediation in 10mM sodium citrate + 0.05% Tween. Samples were incubated with primary antibody (1/750 in PBS) for 16 hours at 4°C. An undiluted Biotin-conjugated goat anti-rabbit IgG polyclonal was used as the secondary antibody.



Western blot - Anti-CTRP5 antibody (ab36893)

Lane 1 : Anti-CTRP5 antibody (ab36893) at 1 µg/ml
Lane 2 : Anti-CTRP5 antibody (ab36893) at 2 µg/ml
Lane 3 : Anti-CTRP5 antibody (ab36893) at 4 µg/ml

All lanes : Human brain cell lysate

Lysates/proteins at 15 µg/ml per lane.

Secondary

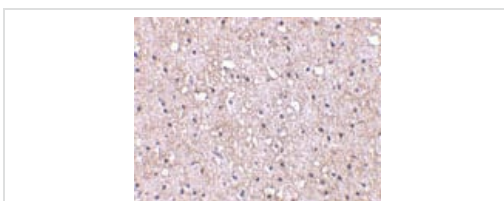
All lanes : Anti-rabbit IgG HRP at 1/10000 dilution

Predicted band size: 25 kDa

Observed band size: 39 kDa

[why is the actual band size different from the predicted?](#)

Lanes read from left to right, 1-3. These proteins are often highly modified post-translationally and may migrate in SDS-PAGE at positions other than their predicted size.



Immunohistochemistry (Formalin/PFA-fixed paraffin-embedded sections) - Anti-CTRP5 antibody (ab36893)

ab36993 at 10µg/ml staining CTRP5 in human brain tissue by IHC

Please note: All products are "FOR RESEARCH USE ONLY. NOT FOR USE IN DIAGNOSTIC PROCEDURES"

Our Abpromise to you: Quality guaranteed and expert technical support

- Replacement or refund for products not performing as stated on the datasheet
- Valid for 12 months from date of delivery
- Response to your inquiry within 24 hours

- We provide support in Chinese, English, French, German, Japanese and Spanish
- Extensive multi-media technical resources to help you
- We investigate all quality concerns to ensure our products perform to the highest standards

If the product does not perform as described on this datasheet, we will offer a refund or replacement. For full details of the Abpromise, please visit <https://www.abcam.com/abpromise> or contact our technical team.

Terms and conditions

- Guarantee only valid for products bought direct from Abcam or one of our authorized distributors