


Product datasheet

Anti-CTU2/NCS2 antibody [EPR11194] ab177160

Recombinant RabMAb

2 References 5 Images

Overview

Product name	Anti-CTU2/NCS2 antibody [EPR11194]
Description	Rabbit monoclonal [EPR11194] to CTU2/NCS2
Host species	Rabbit
Tested applications	Suitable for: Flow Cyt (Intra), WB, IHC-P, Flow Cyt Unsuitable for: ICC or IP
Species reactivity	Reacts with: Human Predicted to work with: Mouse, Rat 
Immunogen	Synthetic peptide within Human CTU2/NCS2 aa 300-400 (Cysteine residue). The exact sequence is proprietary. Database link: Q2VPK5
Positive control	HT29, K562, HeLa and Human testis lysates. Human colonic carcinoma and kidney tissues. Permeabilized HT29 cells.
General notes	This product was previously labelled as CTU2

This product is a recombinant monoclonal antibody, which offers several advantages including:

- High batch-to-batch consistency and reproducibility
- Improved sensitivity and specificity
- Long-term security of supply
- Animal-free production

For more information [see here](#).

Our RabMAb[®] technology is a patented hybridoma-based technology for making rabbit monoclonal antibodies. For details on our patents, please refer to [RabMAb[®] patents](#).

Properties

Form	Liquid
Storage instructions	Shipped at 4°C. Store at +4°C short term (1-2 weeks). Upon delivery aliquot. Store at -20°C long term. Avoid freeze / thaw cycle.
Storage buffer	pH: 7.20 Preservative: 0.01% Sodium azide

Constituents: 9% PBS, 40% Glycerol (glycerin, glycerine), 0.05% BSA, 50% Tissue culture supernatant

Purity	Protein A purified
Clonality	Monoclonal
Clone number	EPR11194
Isotype	IgG

Applications

The Abpromise guarantee Our [Abpromise guarantee](#) covers the use of ab177160 in the following tested applications. The application notes include recommended starting dilutions; optimal dilutions/concentrations should be determined by the end user.

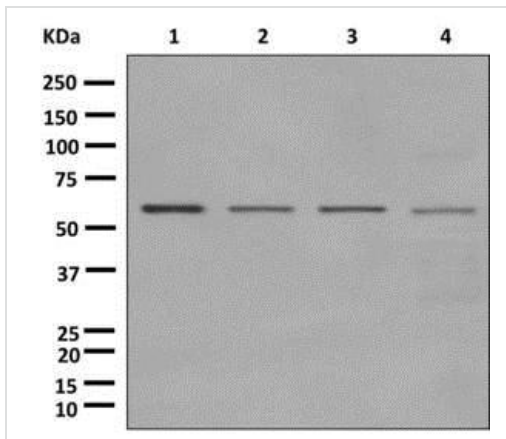
Application	Abreviews	Notes
Flow Cyt (Intra)		1/10 - 1/100. ab172730 - Rabbit monoclonal IgG, is suitable for use as an isotype control with this antibody.
WB		1/1000 - 1/5000. Detects a band of approximately 56 kDa (predicted molecular weight: 56 kDa).
IHC-P		1/50 - 1/100. Perform heat mediated antigen retrieval before commencing with IHC staining protocol.
Flow Cyt		1/10 - 1/100. ab172730 - Rabbit monoclonal IgG, is suitable for use as an isotype control with this antibody.

Application notes Is unsuitable for ICC or IP.

Target

Function	Plays a central role in 2-thiolation of mcm(5)S(2)U at tRNA wobble positions of tRNA(Lys), tRNA(Glu) and tRNA(Gln). May act by forming a heterodimer with CTU1/ATPBD3 that ligates sulfur from thiocarboxylated URM1 onto the uridine of tRNAs at wobble position.
Pathway	tRNA modification; 5-methoxycarbonylmethyl-2-thiouridine-tRNA biosynthesis.
Sequence similarities	Belongs to the CTU2/NCS2 family.
Cellular localization	Cytoplasm.

Images



Western blot - Anti-CTU2/NCS2 antibody [EPR11194] (ab177160)

All lanes : Anti-CTU2/NCS2 antibody [EPR11194] (ab177160) at 1/1000 dilution

Lane 1 : HT29 lysate

Lane 2 : K562 lysate

Lane 3 : HeLa lysate

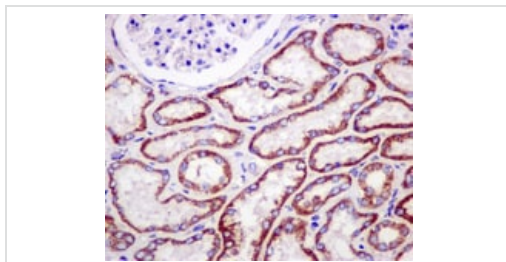
Lane 4 : Human testis lysate

Lysates/proteins at 10 µg per lane.

Secondary

All lanes : Goat anti-rabbit HRP at 1/2000 dilution

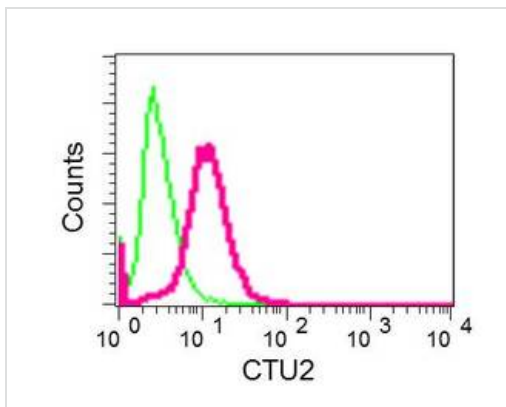
Predicted band size: 56 kDa



Immunohistochemistry (Formalin/PFA-fixed paraffin-embedded sections) - Anti-CTU2/NCS2 antibody [EPR11194] (ab177160)

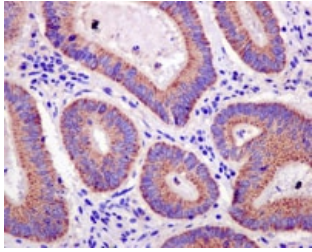
Immunohistochemical analysis of paraffin-embedded Human kidney tissue labeling CTU2/NCS2 with ab177160 at 1/50 dilution.

Perform heat mediated antigen retrieval before commencing with IHC staining protocol.



Flow Cytometry (Intracellular) - Anti-CTU2/NCS2 antibody [EPR11194] (ab177160)

Flow cytometric analysis of permeabilized HT29 cells labeling CTU2/NCS2 with ab177160 at 1/10 dilution (red), or a rabbit IgG (negative) (green).



Immunohistochemical analysis of paraffin-embedded Human colonic carcinoma tissue labeling CTU2/NCS2 with ab177160 at 1/50 dilution.

Perform heat mediated antigen retrieval before commencing with IHC staining protocol.

Immunohistochemistry (Formalin/PFA-fixed paraffin-embedded sections) - Anti-CTU2/NCS2 antibody [EPR11194] (ab177160)

Why choose a recombinant antibody?



Research with confidence
Consistent and reproducible results



Long-term and scalable supply
Recombinant technology



Success from the first experiment
Confirmed specificity



Ethical standards compliant
Animal-free production

Anti-CTU2/NCS2 antibody [EPR11194] (ab177160)

Please note: All products are "FOR RESEARCH USE ONLY. NOT FOR USE IN DIAGNOSTIC PROCEDURES"

Our Abpromise to you: Quality guaranteed and expert technical support

- Replacement or refund for products not performing as stated on the datasheet
- Valid for 12 months from date of delivery
- Response to your inquiry within 24 hours
- We provide support in Chinese, English, French, German, Japanese and Spanish
- Extensive multi-media technical resources to help you
- We investigate all quality concerns to ensure our products perform to the highest standards

If the product does not perform as described on this datasheet, we will offer a refund or replacement. For full details of the Abpromise, please visit <https://www.abcam.com/abpromise> or contact our technical team.

Terms and conditions

- Guarantee only valid for products bought direct from Abcam or one of our authorized distributors