




Product datasheet

Anti-Cullin 7/CUL-7 antibody ab223755

1 Image

Overview

<b>Product name</b>	Anti-Cullin 7/CUL-7 antibody
<b>Description</b>	Rabbit polyclonal to Cullin 7/CUL-7
<b>Host species</b>	Rabbit
<b>Tested applications</b>	<b>Suitable for:</b> IHC-P
<b>Species reactivity</b>	<b>Reacts with:</b> Human <b>Predicted to work with:</b> Rat, Orangutan 
<b>Immunogen</b>	Recombinant fragment corresponding to Human Cullin 7/CUL-7 aa 60-142. Sequence: CKAEHILLWMSKDEIYANCHKMLGEDGQVIGPSQESAGE VGALDKSVLEE METDVKSLIQRALRQLEECVGTIPPAPLLHTVH  Database link: <a href="#">Q14999</a>  <a href="#">Run BLAST with</a>  <a href="#">Run BLAST with</a>
<b>Positive control</b>	IHC-P: Human skeletal muscle tissue.
<b>General notes</b>	This product was previously labelled as CUL-7

Reproducibility is key to advancing scientific discovery and accelerating scientists' next breakthrough.

Abcam is leading the way with our range of recombinant antibodies, knockout-validated antibodies and knockout cell lines, all of which support improved reproducibility.

We are also planning to innovate the way in which we present recommended applications and species on our product datasheets, so that only applications & species that have been tested in our own labs, our suppliers or by selected trusted collaborators are covered by our Abpromise™ guarantee.

In preparation for this, we have started to update the applications & species that this product is Abpromise guaranteed for.

We are also updating the applications & species that this product has been “predicted to work with,” however this information is not covered by our Abpromise guarantee.

Applications & species from publications and Abreviews that have not been tested in our own labs or in those of our suppliers are not covered by the Abpromise guarantee.

Please check that this product meets your needs before purchasing. If you have any questions, special requirements or concerns, please send us an inquiry and/or contact our Support team ahead of purchase. Recommended alternatives for this product can be found below, as well as customer reviews and Q&As.

## Properties

---

<b>Form</b>	Liquid
<b>Storage instructions</b>	Shipped at 4°C. Store at +4°C short term (1-2 weeks). Upon delivery aliquot. Store at -20°C long term. Avoid freeze / thaw cycle.
<b>Storage buffer</b>	pH: 7.2 Preservative: 0.02% Sodium azide Constituents: 40% Glycerol (glycerin, glycerine), PBS
<b>Purity</b>	Immunogen affinity purified
<b>Clonality</b>	Polyclonal
<b>Isotype</b>	IgG

## Applications

---

Our [Abpromise guarantee](#) covers the use of **ab223755** in the following tested applications.

The application notes include recommended starting dilutions; optimal dilutions/concentrations should be determined by the end user.

Application	Abreviews	Notes
IHC-P		1/50 - 1/200. Perform heat mediated antigen retrieval with citrate buffer pH 6 before commencing with IHC staining protocol.

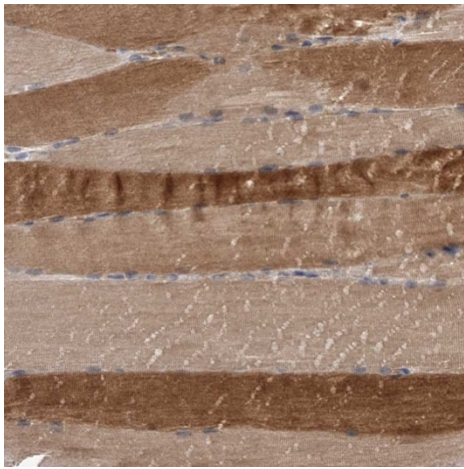
---

## Target

---

<b>Function</b>	Component of a probable SCF-like E3 ubiquitin-protein ligase complex, which mediates the ubiquitination and subsequent proteasomal degradation of target proteins. Probably plays a role in the degradation of proteins involved in endothelial proliferation and/or differentiation (By similarity). Seems not to promote polyubiquitination and proteasomal degradation of TP53. In vitro, complexes of CUL7 with either CUL9 or FBXW8 or TP53 contain E3 ubiquitin-protein ligase activity.
<b>Tissue specificity</b>	Highly expressed in fetal kidney and adult skeletal muscle. Also abundant in fetal brain, as well as in adult pancreas, kidney, placenta and heart. Detected in trophoblasts, lymphoblasts, osteoblasts, chondrocytes and skin fibroblasts.
<b>Pathway</b>	Protein modification; protein ubiquitination.
<b>Involvement in disease</b>	Defects in CUL7 are the cause of 3M syndrome type 1 (3M1) [MIM:273750]. An autosomal recessive disorder characterized by severe pre- and postnatal growth retardation, facial dysmorphism, large head circumference, and normal intelligence and endocrine function. Skeletal changes include long slender tubular bones and tall vertebral bodies.
<b>Sequence similarities</b>	Belongs to the cullin family. Contains 1 DOC domain.

---

**Images**

Paraffin-embedded human skeletal muscle tissue stained for Cullin 7/CUL-7 using ab223755 at 1/50 dilution in immunohistochemical analysis.

Immunohistochemistry (Formalin/PFA-fixed paraffin-embedded sections) - Anti-Cullin 7/CUL-7 antibody (ab223755)

**Please note:** All products are "FOR RESEARCH USE ONLY. NOT FOR USE IN DIAGNOSTIC PROCEDURES"

---

**Our Abpromise to you: Quality guaranteed and expert technical support**

- Replacement or refund for products not performing as stated on the datasheet
- Valid for 12 months from date of delivery
- Response to your inquiry within 24 hours
- We provide support in Chinese, English, French, German, Japanese and Spanish
- Extensive multi-media technical resources to help you
- We investigate all quality concerns to ensure our products perform to the highest standards

If the product does not perform as described on this datasheet, we will offer a refund or replacement. For full details of the Abpromise, please visit <https://www.abcam.com/abpromise> or contact our technical team.

---

**Terms and conditions**

- Guarantee only valid for products bought direct from Abcam or one of our authorized distributors