

Product datasheet

Anti-CUTC antibody [EPR7929] ab133762

KO VALIDATED Recombinant RabMAb

3 Images

Overview

| | |
|----------------------------|---|
| Product name | Anti-CUTC antibody [EPR7929] |
| Description | Rabbit monoclonal [EPR7929] to CUTC |
| Host species | Rabbit |
| Tested applications | Suitable for: WB Unsuitable for: Flow Cyt, ICC or IHC-P |
| Species reactivity | Reacts with: Mouse, Rat, Human |
| Immunogen | Synthetic peptide corresponding to a region within Human CUTC (UniProt ID: Q9NTM9). |
| Positive control | WB: SH-SY5Y, Jurkat, HeLa and A431 cell lysates |
| General notes | |

This product is a recombinant monoclonal antibody, which offers several advantages including:

- High batch-to-batch consistency and reproducibility
- Improved sensitivity and specificity
- Long-term security of supply
- Animal-free production

For more information [see here](#).

Our RabMAb[®] technology is a patented hybridoma-based technology for making rabbit monoclonal antibodies. For details on our patents, please refer to [RabMAb[®] patents](#).

Reproducibility is key to advancing scientific discovery and accelerating scientists' next breakthrough.

Abcam is leading the way with our range of recombinant antibodies, knockout-validated antibodies and knockout cell lines, all of which support improved reproducibility.

We are also planning to innovate the way in which we present recommended applications and species on our product datasheets, so that only applications & species that have been tested in our own labs, our suppliers or by selected trusted collaborators are covered by our Abpromise[™] guarantee.

In preparation for this, we have started to update the applications & species that this product is Abpromise guaranteed for.

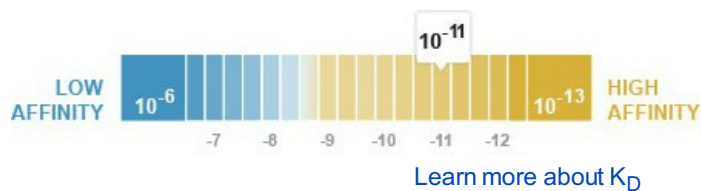
We are also updating the applications & species that this product has been "predicted to work with," however this information is not covered by our Abpromise guarantee.

Applications & species from publications and Abreviews that have not been tested in our own labs or in those of our suppliers are not covered by the Abpromise guarantee.

Please check that this product meets your needs before purchasing. If you have any questions, special requirements or concerns, please send us an inquiry and/or contact our Support team ahead of purchase. Recommended alternatives for this product can be found below, as well as customer reviews and Q&As.

Properties

| | |
|--|--|
| Form | Liquid |
| Storage instructions | Shipped at 4°C. Upon delivery aliquot and store at -20°C. Avoid repeated freeze / thaw cycles. |
| Dissociation constant (K_D) | K _D = 2.00 x 10 ⁻¹¹ M |



| | |
|-----------------------|---|
| Storage buffer | pH: 7.20 Preservative: 0.01% Sodium azide Constituents: 9% PBS, 40% Glycerol (glycerin, glycerine), 0.05% BSA, 50% Tissue culture supernatant |
| Purity | Tissue culture supernatant |
| Clonality | Monoclonal |
| Clone number | EPR7929 |
| Isotype | IgG |

Applications

Our [Abpromise guarantee](#) covers the use of **ab133762** in the following tested applications.

The application notes include recommended starting dilutions; optimal dilutions/concentrations should be determined by the end user.

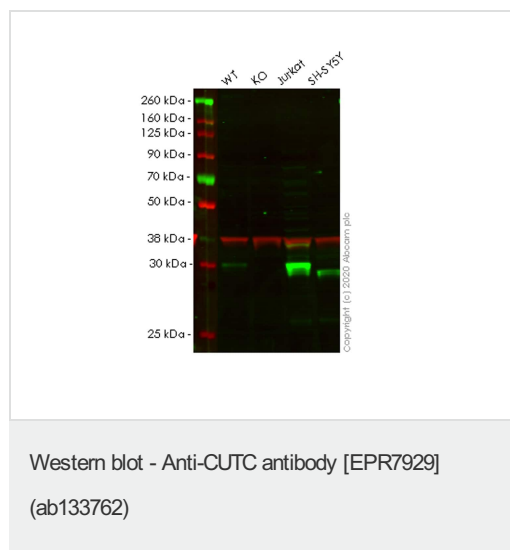
| Application | Abreviews | Notes |
|-------------|-----------|--|
| WB | | 1/1000 - 1/10000. Detects a band of approximately 29 kDa (predicted molecular weight: 29 kDa). |

Application notes Is unsuitable for Flow Cyt, ICC or IHC-P.

Target

| | |
|------------------------------|--|
| Function | May play a role in copper homeostasis. Can bind one Cu(1+) per subunit. |
| Tissue specificity | Ubiquitous. |
| Sequence similarities | Belongs to the CutC family. |
| Cellular localization | Cytoplasm. Nucleus. The overexpressed protein is detected in the cytoplasm, and depending on the cell line, also in the nucleus. |

Images



All lanes : Anti-CUTC antibody [EPR7929] (ab133762) at 1/1000 dilution

Lane 1 : Wild-type HeLa cell lysate

Lane 2 : CUTC knockout HeLa cell lysate

Lane 3 : Jurkat cell lysate

Lane 4 : SH-SY5Y cell lysate

Lysates/proteins at 20 µg per lane.

Secondary

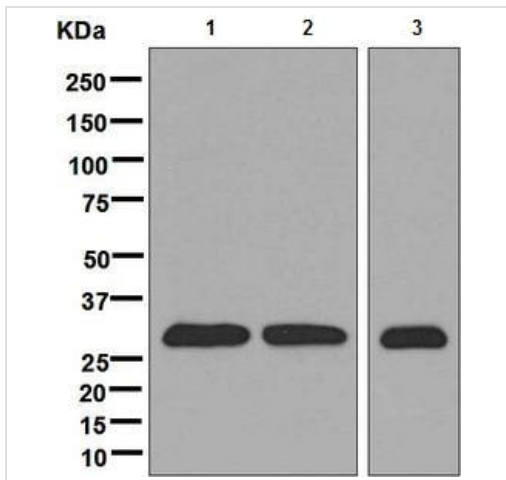
All lanes : Goat anti-Rabbit IgG H&L (IRDye® 800CW) preadsorbed (ab216773) at 1/10000 dilution

Predicted band size: 29 kDa

Observed band size: 29 kDa

Lanes 1-5: Merged signal (red and green). Green - ab133762 observed at 29 kDa. Red - loading control ab8245 observed at 36 kDa.

ab133762 Anti-CUTC antibody [EPR7929] was shown to specifically react with CUTC in wild-type HeLa cells. Loss of signal was observed when knockout cell line ab265860 (knockout cell lysate ab258388) was used. Wild-type and CUTC knockout samples were subjected to SDS-PAGE. ab133762 and Anti-GAPDH antibody [6C5] - Loading Control (ab8245) were incubated overnight at 4°C at 1 in 1000 dilution and 1 in 20000 dilution respectively. Blots were developed with Goat anti-Rabbit IgG H&L (IRDye® 800CW) preadsorbed (ab216773) and Goat anti-Mouse IgG H&L (IRDye® 680RD) preadsorbed (ab216776) secondary antibodies at 1 in 20000 dilution for 1 hour at room temperature before imaging.



Western blot - Anti-CUTC antibody [EPR7929] (ab133762)

All lanes : Anti-CUTC antibody [EPR7929] (ab133762) at 1/1000 dilution

Lane 1 : Jurkat cell lysate

Lane 2 : HeLa cell lysate

Lane 3 : A431 cell lysate

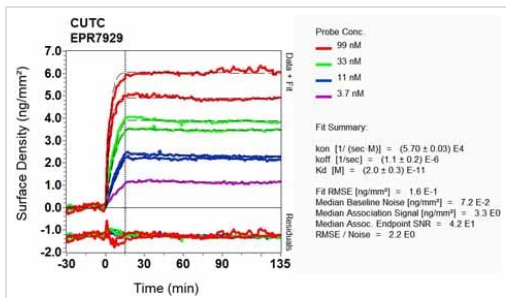
Lysates/proteins at 10 µg per lane.

Secondary

All lanes : Goat anti-rabbit HRP conjugated antibody at 1/2000 dilution

Predicted band size: 29 kDa

Observed band size: 29 kDa



Other - Anti-CUTC antibody [EPR7929] (ab133762)

Equilibrium dissociation constant (K_D)

Learn more about K_D

[Click here to learn more about \$K_D\$](#)

Please note: All products are "FOR RESEARCH USE ONLY. NOT FOR USE IN DIAGNOSTIC PROCEDURES"

Our Abpromise to you: Quality guaranteed and expert technical support

- Replacement or refund for products not performing as stated on the datasheet
- Valid for 12 months from date of delivery
- Response to your inquiry within 24 hours
- We provide support in Chinese, English, French, German, Japanese and Spanish
- Extensive multi-media technical resources to help you
- We investigate all quality concerns to ensure our products perform to the highest standards

If the product does not perform as described on this datasheet, we will offer a refund or replacement. For full details of the Abpromise,

please visit <https://www.abcam.com/abpromise> or contact our technical team.

Terms and conditions

- Guarantee only valid for products bought direct from Abcam or one of our authorized distributors