

Product datasheet

Anti-Cyclin A2 antibody [E399] ab32498

Recombinant RabMAb

[9 References](#) [5 Images](#)

Overview

Product name	Anti-Cyclin A2 antibody [E399]
Description	Rabbit monoclonal [E399] to Cyclin A2
Host species	Rabbit
Tested applications	Suitable for: WB, ICC/IF, Flow Cyt, IP
Species reactivity	Reacts with: Human
Immunogen	Synthetic peptide within Human Cyclin A2 aa 100-200 (N terminal). The exact sequence is proprietary.
Epitope	ab32498 reacts with an epitope located in the N terminal region of Cyclin A2
Positive control	ICC/IF: HeLa (Human cervix adenocarcinoma epithelial cell) WB: HeLa untreated, HeLa treated G1/S phase, K562 and HeLa cell lysate
General notes	<p>We are constantly working hard to ensure we provide our customers with best in class antibodies. As a result of this work we are pleased to now offer this antibody in purified format. We are in the process of updating our datasheets. The purified format is designated 'PUR' on our product labels. If you have any questions regarding this update, please contact our Scientific Support team.</p> <p>This product is a recombinant monoclonal antibody, which offers several advantages including:</p> <ul style="list-style-type: none"> - High batch-to-batch consistency and reproducibility - Improved sensitivity and specificity - Long-term security of supply - Animal-free production <p>For more information see here.</p> <p>Our RabMAb[®] technology is a patented hybridoma-based technology for making rabbit monoclonal antibodies. For details on our patents, please refer to RabMAb[®] patents.</p> <p>Mouse, Rat: We have preliminary internal testing data to indicate this antibody may not react with these species. Please contact us for more information.</p>

Properties

Form	Liquid
Storage instructions	Shipped at 4°C. Upon delivery aliquot and store at -20°C. Avoid freeze / thaw cycles.

Storage buffer	pH: 7.20 Preservative: 0.01% Sodium azide Constituents: 49% PBS, 50% Glycerol (glycerin, glycerine), 0.05% BSA
Purity	Protein A purified
Clonality	Monoclonal
Clone number	E399
Isotype	IgG

Applications

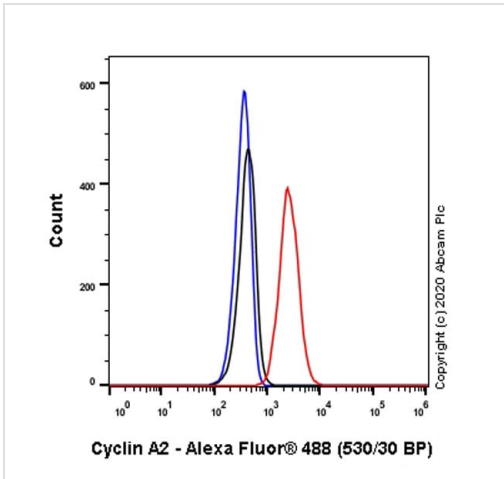
The Abpromise guarantee Our **Abpromise guarantee** covers the use of ab32498 in the following tested applications. The application notes include recommended starting dilutions; optimal dilutions/concentrations should be determined by the end user.

Application	Abreviews	Notes
WB		1/1000. Predicted molecular weight: 48 kDa.
ICC/IF		1/50.
Flow Cyt		1/30.
IP		1/20.

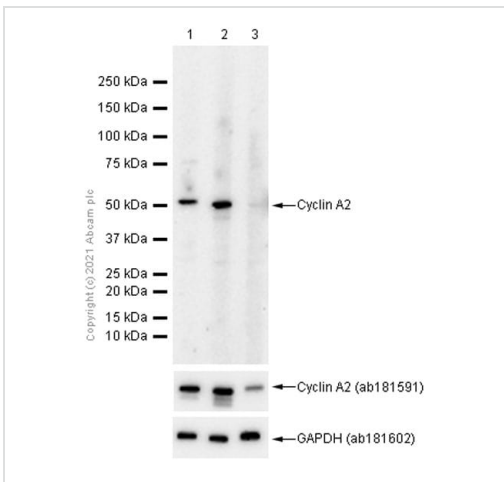
Target

Function	Essential for the control of the cell cycle at the G1/S (start) and the G2/M (mitosis) transitions.
Sequence similarities	Belongs to the cyclin family. Cyclin AB subfamily.
Developmental stage	Accumulates steadily during G2 and is abruptly destroyed at mitosis.
Cellular localization	Nucleus. Cytoplasm. Cytoplasmic when associated with SCAPER.

Images



Flow Cytometry - Anti-Cyclin A2 antibody [E399]
(ab32498)



Western blot - Anti-Cyclin A2 antibody [E399]
(ab32498)

Flow Cytometry analysis of HeLa (Human cervix adenocarcinoma epithelial cell) cells labelling Cyclin A2 with Purified ab32498 at 1:30 dilution (10 µg/ml) (Red). Cells were fixed with 4% Paraformaldehyde and permeabilised with 90% Methanol. A Goat anti rabbit IgG (Alexa Fluor™ 488, **ab150077**) secondary antibody was used at 1:2000. Isotype control - Rabbit monoclonal IgG (Black). Unlabelled control - Cell without incubation with primary antibody and secondary antibody (Blue).

All lanes : Anti-Cyclin A2 antibody [E399] (ab32498) at 1/1000 dilution (Purified)

Lane 1 : HeLa (Human epithelial cell line from cervix adenocarcinoma) lysate; Untreated, asynchronous cells (**ab136811**)

Lane 2 : HeLa (Human epithelial cell line from cervix adenocarcinoma) lysate; G1/S arrested cells (thymidine treatment) (**ab136811**)

Lane 3 : HeLa (Human epithelial cell line from cervix adenocarcinoma) lysate; G2/M arrested cells (sequential thymidine and nocodazole treatments) (**ab136811**)

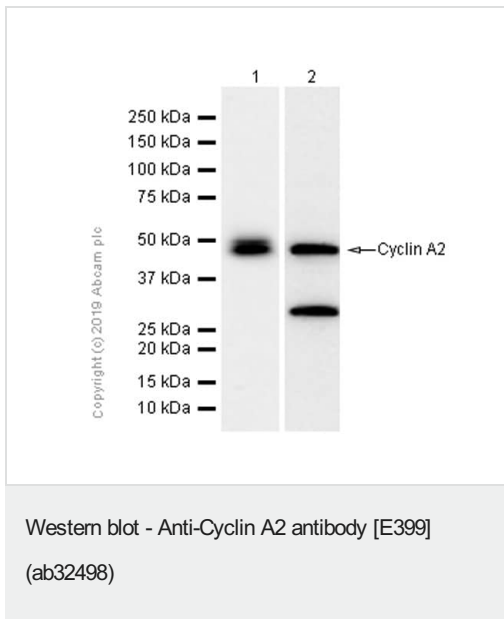
Secondary

All lanes : Goat Anti-Rabbit IgG H&L (HRP) (**ab97051**) at 1/20000 dilution

Predicted band size: 48 kDa

Observed band size: 50 kDa

Cyclin A2 is down regulated at the G2/M phase.



All lanes : Anti-Cyclin A2 antibody [E399] (ab32498) at 1/2000 dilution (Purified)

Lane 1 : K-562 (Human chronic myelogenous leukemia lymphoblast) whole cell lysate

Lane 2 : HeLa (Human cervix adenocarcinoma epithelial cell) whole cell lysate

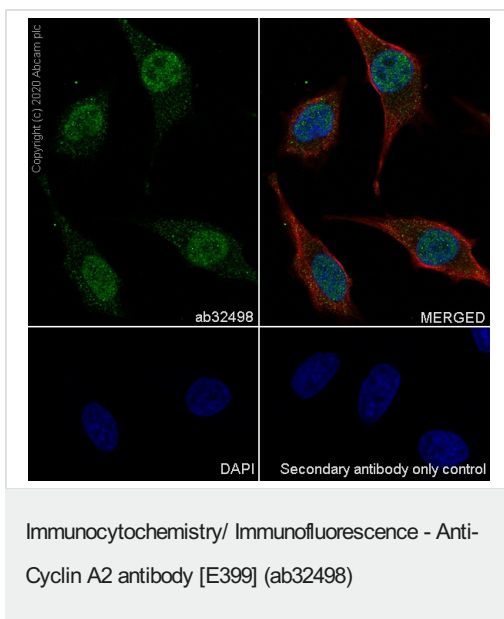
Secondary

All lanes : Goat Anti-Rabbit IgG H&L (HRP) (ab97051) at 1/20000 dilution

Predicted band size: 48 kDa


Observed band size: 50 kDa

The smaller band is due to a tissue-specific splice variant(PMID 22745723). The band of 35kDa maybe the cleaved form(PMID: 12176996).



Immunocytochemistry analysis of HeLa (Human cervix adenocarcinoma epithelial cell) cells labeling Cyclin A2 with Purified ab32498 at 1/50 dilution (5.66 µg/mL). Cells were fixed in 4% Paraformaldehyde and permeabilized with 0.1% tritonX-100. Cells were counterstained with Ab195889 Anti-alpha Tubulin antibody [DM1A] - Microtubule Marker (Alexa Fluor® 594) 1/200 (2.5 µg/mL). Goat anti rabbit IgG (Alexa Fluor® 488, [ab150077](#)) was used as the secondary antibody at 1/1000 (2 µg/mL) dilution. DAPI (blue) was used as nuclear counterstain. PBS instead of the primary antibody was used as the secondary antibody only control.

Why choose a recombinant antibody?



Research with confidence
Consistent and reproducible results

Long-term and scalable supply
Recombinant technology

Success from the first experiment
Confirmed specificity

Ethical standards compliant
Animal-free production

Anti-Cyclin A2 antibody [E399] (ab32498)

Please note: All products are "FOR RESEARCH USE ONLY. NOT FOR USE IN DIAGNOSTIC PROCEDURES"

Our Abpromise to you: Quality guaranteed and expert technical support

- Replacement or refund for products not performing as stated on the datasheet
- Valid for 12 months from date of delivery
- Response to your inquiry within 24 hours
- We provide support in Chinese, English, French, German, Japanese and Spanish
- Extensive multi-media technical resources to help you
- We investigate all quality concerns to ensure our products perform to the highest standards

If the product does not perform as described on this datasheet, we will offer a refund or replacement. For full details of the Abpromise, please visit <https://www.abcam.com/abpromise> or contact our technical team.

Terms and conditions

- Guarantee only valid for products bought direct from Abcam or one of our authorized distributors