

Product datasheet

Anti-Cyclin B1 antibody - N-terminal ab226397

2 Images

Overview

<b>Product name</b>	Anti-Cyclin B1 antibody - N-terminal
<b>Description</b>	Rabbit polyclonal to Cyclin B1 - N-terminal
<b>Host species</b>	Rabbit
<b>Tested applications</b>	<b>Suitable for:</b> WB, IP
<b>Species reactivity</b>	<b>Reacts with:</b> Human <b>Predicted to work with:</b> Chimpanzee, Cynomolgus monkey, Rhesus monkey, Gorilla, Orangutan



**Immunogen** Synthetic peptide within Human Cyclin B1 aa 1-50 (N terminal). The exact sequence is proprietary.  
Database link: [P14635](#)

**Positive control** WB: HeLa, HEK-293T and Jurkat whole cell lysates. IP: HEK-293T whole cell lysate.

**General notes** Reproducibility is key to advancing scientific discovery and accelerating scientists' next breakthrough.

Abcam is leading the way with our range of recombinant antibodies, knockout-validated antibodies and knockout cell lines, all of which support improved reproducibility.

We are also planning to innovate the way in which we present recommended applications and species on our product datasheets, so that only applications & species that have been tested in our own labs, our suppliers or by selected trusted collaborators are covered by our Abpromise™ guarantee.

In preparation for this, we have started to update the applications & species that this product is Abpromise guaranteed for.

We are also updating the applications & species that this product has been “predicted to work with,” however this information is not covered by our Abpromise guarantee.

Applications & species from publications and Abreviews that have not been tested in our own labs or in those of our suppliers are not covered by the Abpromise guarantee.

Please check that this product meets your needs before purchasing. If you have any questions, special requirements or concerns, please send us an inquiry and/or contact our Support team ahead of purchase. Recommended alternatives for this product can be found below, as well as customer reviews and Q&As.

Properties

## Properties

---

<b>Form</b>	Liquid
<b>Storage instructions</b>	Shipped at 4°C. Store at +4°C short term (1-2 weeks). Upon delivery aliquot. Store at -20°C long term. Avoid freeze / thaw cycle.
<b>Storage buffer</b>	pH: 7 Preservative: 0.09% Sodium azide Constituent: Tris citrate/phosphate
<b>Purity</b>	pH 7 to 8 Immunogen affinity purified
<b>Purification notes</b>	ab226397 was affinity purified using an epitope specific to Cyclin B1 immobilized on solid support.
<b>Clonality</b>	Polyclonal
<b>Isotype</b>	IgG

## Applications

---

Our [Abpromise guarantee](#) covers the use of **ab226397** in the following tested applications.

The application notes include recommended starting dilutions; optimal dilutions/concentrations should be determined by the end user.

Application	Abreviews	Notes
WB		1/2000 - 1/10000. Predicted molecular weight: 48 kDa.
IP		Use at 2-10 µg/mg of lysate.

---

## Target

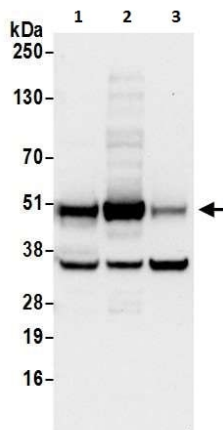
---

<b>Function</b>	Essential for the control of the cell cycle at the G2/M (mitosis) transition.
<b>Sequence similarities</b>	Belongs to the cyclin family. Cyclin AB subfamily.
<b>Developmental stage</b>	Accumulates steadily during G2 and is abruptly destroyed at mitosis.
<b>Post-translational modifications</b>	Ubiquitinated by the SCF(NIPA) complex during interphase, leading to its destruction. Not ubiquitinated during G2/M phases.
<b>Cellular localization</b>	Cytoplasm. Nucleus. Cytoplasm > cytoskeleton > centrosome.

---

## Images

---



Western blot - Anti-Cyclin B1 antibody - N-terminal (ab226397)

**All lanes :** Anti-Cyclin B1 antibody - N-terminal (ab226397) at 0.1  $\mu\text{g/ml}$

**Lane 1 :** HeLa (human epithelial cell line from cervix adenocarcinoma) whole cell lysate

**Lane 2 :** HEK-293T (human epithelial cell line from embryonic kidney transformed with large T antigen) whole cell lysate

**Lane 3 :** Jurkat (human T cell leukemia cell line from peripheral blood) whole cell lysate

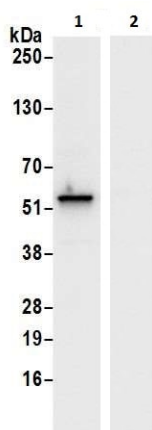
Lysates/proteins at 50  $\mu\text{g}$  per lane.

Developed using the ECL technique.

**Predicted band size:** 48 kDa

**Exposure time:** 10 seconds

Lysates prepared using NETN lysis buffer.



Immunoprecipitation - Anti-Cyclin B1 antibody - N-terminal (ab226397)

Cyclin B1 was immunoprecipitated from HEK-293T (human epithelial cell line from embryonic kidney transformed with large T antigen) whole cell lysate (prepared using NETN lysis buffer; 1 mg for IP, 20% of IP loaded) with ab226397 at 6  $\mu\text{g/mg}$  lysate. Western blot was performed from the immunoprecipitate using ab226397 at 1  $\mu\text{g/ml}$ .

Lane 1: ab226397 IP in HEK-293T whole cell lysate.

Lane 2: Control IgG IP in HEK-293T whole cell lysate.

Detection: Chemiluminescence with exposure time of 1 second.

## **Our Abpromise to you: Quality guaranteed and expert technical support**

---

- Replacement or refund for products not performing as stated on the datasheet
- Valid for 12 months from date of delivery
- Response to your inquiry within 24 hours
  
- We provide support in Chinese, English, French, German, Japanese and Spanish
- Extensive multi-media technical resources to help you
- We investigate all quality concerns to ensure our products perform to the highest standards

If the product does not perform as described on this datasheet, we will offer a refund or replacement. For full details of the Abpromise, please visit <https://www.abcam.com/abpromise> or contact our technical team.

## **Terms and conditions**

---

- Guarantee only valid for products bought direct from Abcam or one of our authorized distributors