

Product datasheet

Anti-Cyclin D2 antibody ab89595

3 Images

Overview

---

<b>Product name</b>	Anti-Cyclin D2 antibody
<b>Description</b>	Mouse polyclonal to Cyclin D2
<b>Host species</b>	Mouse
<b>Tested applications</b>	<b>Suitable for:</b> WB
<b>Species reactivity</b>	<b>Reacts with:</b> Human
<b>Immunogen</b>	Full length Human Cyclin D2 (NP_001750.1)
<b>Positive control</b>	Human placenta tissue lysate. A-431 cell lysate. Cyclin D2 transfected 293T cell lysate.
<b>General notes</b>	<p>Reproducibility is key to advancing scientific discovery and accelerating scientists' next breakthrough.</p> <p>Abcam is leading the way with our range of recombinant antibodies, knockout-validated antibodies and knockout cell lines, all of which support improved reproducibility.</p> <p>We are also planning to innovate the way in which we present recommended applications and species on our product datasheets, so that only applications &amp; species that have been tested in our own labs, our suppliers or by selected trusted collaborators are covered by our Abpromise™ guarantee.</p> <p>In preparation for this, we have started to update the applications &amp; species that this product is Abpromise guaranteed for.</p> <p>We are also updating the applications &amp; species that this product has been “predicted to work with,” however this information is not covered by our Abpromise guarantee.</p> <p>Applications &amp; species from publications and Abreviews that have not been tested in our own labs or in those of our suppliers are not covered by the Abpromise guarantee.</p> <p>Please check that this product meets your needs before purchasing. If you have any questions, special requirements or concerns, please send us an inquiry and/or contact our Support team ahead of purchase. Recommended alternatives for this product can be found below, as well as customer reviews and Q&amp;As.</p>

Properties

---

<b>Form</b>	Liquid
<b>Storage instructions</b>	Shipped at 4°C. Upon delivery aliquot and store at -20°C or -80°C. Avoid repeated freeze / thaw cycles.

<b>Storage buffer</b>	pH: 7.4 Constituent: 2.68% PBS
<b>Purity</b>	Protein A purified
<b>Clonality</b>	Polyclonal
<b>Isotype</b>	IgG

## Applications

Our [Abpromise guarantee](#) covers the use of **ab89595** in the following tested applications.

The application notes include recommended starting dilutions; optimal dilutions/concentrations should be determined by the end user.

Application	Abreviews	Notes
WB		Use a concentration of 1 µg/ml. Predicted molecular weight: 33 kDa.

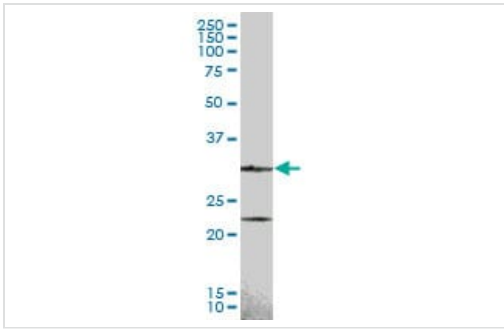
## Target

**Function** Regulatory component of the cyclin D2-CDK4 (DC) complex that phosphorylates and inhibits members of the retinoblastoma (RB) protein family including RB1 and regulates the cell-cycle during G(1)/S transition. Phosphorylation of RB1 allows dissociation of the transcription factor E2F from the RB/E2F complex and the subsequent transcription of E2F target genes which are responsible for the progression through the G(1) phase. Hypophosphorylates RB1 in early G(1) phase. Cyclin D-CDK4 complexes are major integrators of various mitogenic and antimitogenic signals. Also substrate for SMAD3, phosphorylating SMAD3 in a cell-cycle-dependent manner and repressing its transcriptional activity. Component of the ternary complex, cyclin D2/CDK4/CDKN1B, required for nuclear translocation and activity of the cyclin D-CDK4 complex.

**Sequence similarities** Belongs to the cyclin family. Cyclin D subfamily.  
Contains 1 cyclin N-terminal domain.

**Cellular localization** Nucleus. Cytoplasm. Membrane. Cyclin D-CDK4 complexes accumulate at the nuclear membrane and are then translocated into the nucleus through interaction with KIP/CIP family members.

## Images



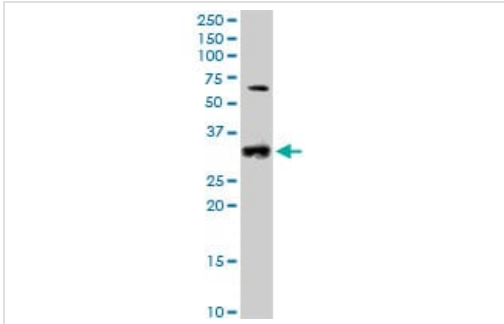
Western blot - Anti-Cyclin D2 antibody (ab89595)

Anti-Cyclin D2 antibody (ab89595) at 1 µg/ml + Human placenta tissue lysate at 50 µg

**Predicted band size:** 33 kDa

**Observed band size:** 33 kDa

**Additional bands at:** 22 kDa. We are unsure as to the identity of these extra bands.



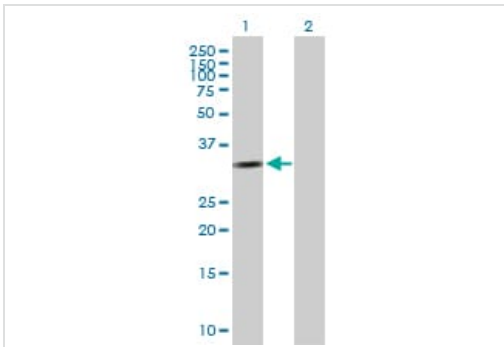
Western blot - Anti-Cyclin D2 antibody (ab89595)

Anti-Cyclin D2 antibody (ab89595) at 1 µg/ml + A-431 cell lysate at 50 µg

**Predicted band size:** 33 kDa

**Observed band size:** 33 kDa

**Additional bands at:** 65 kDa. We are unsure as to the identity of these extra bands.



Western blot - Anti-Cyclin D2 antibody (ab89595)

**All lanes :** Anti-Cyclin D2 antibody (ab89595) at 1 µg/ml

**Lane 1 :** Cyclin D2 transfected 293T cell lysate

**Lane 2 :** Non-transfected 293T cell lysate

Lysates/proteins at 25 µg per lane.

**Predicted band size:** 33 kDa

**Observed band size:** 33 kDa

**Please note:** All products are "FOR RESEARCH USE ONLY. NOT FOR USE IN DIAGNOSTIC PROCEDURES"

### Our Abpromise to you: Quality guaranteed and expert technical support

- Replacement or refund for products not performing as stated on the datasheet
- Valid for 12 months from date of delivery
- Response to your inquiry within 24 hours
- We provide support in Chinese, English, French, German, Japanese and Spanish
- Extensive multi-media technical resources to help you
- We investigate all quality concerns to ensure our products perform to the highest standards

If the product does not perform as described on this datasheet, we will offer a refund or replacement. For full details of the Abpromise,

please visit <https://www.abcam.com/abpromise> or contact our technical team.

## **Terms and conditions**

---

- Guarantee only valid for products bought direct from Abcam or one of our authorized distributors