


Product datasheet

Anti-Cyclin D3/CCND3 antibody [SP207] - BSA and Azide free ab245734

KO VALIDATED Recombinant RabMAb

13 Images

Overview

Product name	Anti-Cyclin D3/CCND3 antibody [SP207] - BSA and Azide free
Description	Rabbit monoclonal [SP207] to Cyclin D3/CCND3 - BSA and Azide free
Host species	Rabbit
Tested applications	Suitable for: Flow Cyt, IHC-P, WB
Species reactivity	Reacts with: Human Predicted to work with: Mouse, Rat, Cow 
Immunogen	Synthetic peptide within Human Cyclin D3/CCND3 aa 250 to the C-terminus. The exact sequence is proprietary. Database link: P30281
Positive control	IHC-P: Human tonsil, skin, uterus, placenta, cervix, pancreas, kidney, reactive lymph node, cervical squamous cell carcinoma, and B-cell lymphoma tissue; Flow Cyt: K562 cells.
General notes	FOR RESEARCH USE ONLY. For commercial use, please contact partnerships@abcam.com . ab245734 is the carrier-free version of ab183338 This format is designed for use in antibody labeling, including fluorochromes, metal isotopes, oligonucleotides, enzymes. Our carrier-free formats are supplied in a buffer free of BSA, sodium azide and glycerol for higher conjugation efficiency. Use our conjugation kits for antibody conjugates that are ready-to-use in as little as 20 minutes with <1 minute hands-on-time and 100% antibody recovery: available for fluorescent dyes, HRP, biotin and gold. Ab245734 is compatible with the Maxpar® Antibody Labeling Kit from Fluidigm. <i>Maxpar® is a trademark of Fluidigm Canada Inc.</i> This product was previously labelled as Cyclin D3 This product is a recombinant monoclonal antibody, which offers several advantages including: - High batch-to-batch consistency and reproducibility - Improved sensitivity and specificity - Long-term security of supply - Animal-free production

For more information [see here](#).

Our RabMAb[®] technology is a patented hybridoma-based technology for making rabbit monoclonal antibodies. For details on our patents, please refer to [RabMAb[®] patents](#).

Reproducibility is key to advancing scientific discovery and accelerating scientists' next breakthrough.

Abcam is leading the way with our range of recombinant antibodies, knockout-validated antibodies and knockout cell lines, all of which support improved reproducibility.

We are also planning to innovate the way in which we present recommended applications and species on our product datasheets, so that only applications & species that have been tested in our own labs, our suppliers or by selected trusted collaborators are covered by our Abpromise[™] guarantee.

In preparation for this, we have started to update the applications & species that this product is Abpromise guaranteed for.

We are also updating the applications & species that this product has been "predicted to work with," however this information is not covered by our Abpromise guarantee.

Applications & species from publications and Abreviews that have not been tested in our own labs or in those of our suppliers are not covered by the Abpromise guarantee.

Please check that this product meets your needs before purchasing. If you have any questions, special requirements or concerns, please send us an inquiry and/or contact our Support team ahead of purchase. Recommended alternatives for this product can be found below, as well as customer reviews and Q&As.

Properties

Form	Liquid
Storage instructions	Shipped at 4°C. Store at +4°C. Do Not Freeze.
Storage buffer	pH: 7.20 Constituent: PBS
Carrier free	Yes
Purity	Protein A/G purified
Purification notes	Purified from TCS by protein A/G.
Clonality	Monoclonal
Clone number	SP207
Isotype	IgG

Applications

Our [Abpromise guarantee](#) covers the use of **ab245734** in the following tested applications.

The application notes include recommended starting dilutions; optimal dilutions/concentrations should be determined by the end user.

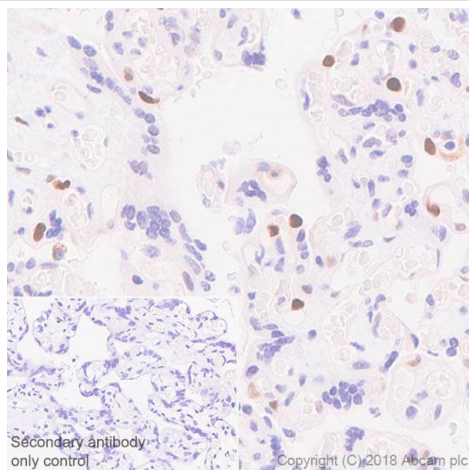
Application	Abreviews	Notes
-------------	-----------	-------

Application	Abreviews	Notes
Flow Cyt		Use at an assay dependent concentration. ab172730 - Rabbit monoclonal IgG, is suitable for use as an isotype control with this antibody.
IHC-P		Use at an assay dependent concentration. Boil tissue section in EDTA buffer, pH 8.0 for 10 min followed by cooling at room temperature for 20 min.
WB		Use at an assay dependent concentration. Predicted molecular weight: 33 kDa.

Target

Function	Regulatory component of the cyclin D3-CDK4 (DC) complex that phosphorylates and inhibits members of the retinoblastoma (RB) protein family including RB1 and regulates the cell-cycle during G(1)/S transition. Phosphorylation of RB1 allows dissociation of the transcription factor E2F from the RB/E2F complex and the subsequent transcription of E2F target genes which are responsible for the progression through the G(1) phase. Hypophosphorylates RB1 in early G(1) phase. Cyclin D-CDK4 complexes are major integrators of various mitogenic and antimitogenic signals. Also substrate for SMAD3, phosphorylating SMAD3 in a cell-cycle-dependent manner and repressing its transcriptional activity. Component of the ternary complex, cyclin D3/CDK4/CDKN1B, required for nuclear translocation and activity of the cyclin D-CDK4 complex.
Sequence similarities	Belongs to the cyclin family. Cyclin D subfamily. Contains 1 cyclin N-terminal domain.
Cellular localization	Nucleus. Cytoplasm. Membrane. Cyclin D-CDK4 complexes accumulate at the nuclear membrane and are then translocated to the nucleus through interaction with KIP/CIP family members.

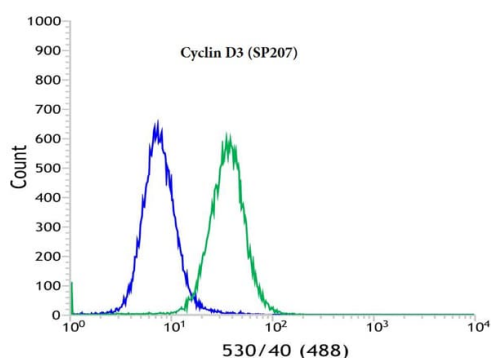
Images



Immunohistochemistry (Formalin/PFA-fixed paraffin-embedded sections) - Anti-Cyclin D3/CCND3 antibody [SP207] - BSA and Azide free (ab245734)

Immunohistochemistry (Formalin/PFA-fixed paraffin-embedded sections) analysis of Human placenta tissue sections labeling Cyclin D3/CCND3 with [ab183338](#) at 1/100 dilution (3.35 µg/ml). Heat mediated antigen retrieval was performed Heat mediated antigen retrieval with Tris-EDTA buffer (pH 9.0, epitope retrieval solution 2) for 20 mins. Rabbit specific IHC polymer detection kit HRP/DAB ([ab209101](#)) was used as the secondary antibody. Negative control: PBS instead of the primary antibody. Hematoxylin was used as a counterstain.

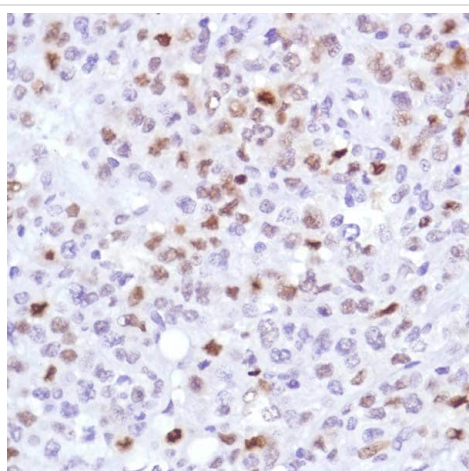
This data was developed using the same antibody clone in a different buffer formulation containing PBS, BSA, glycerol, and sodium azide ([ab183338](#))



Flow Cytometry - Anti-Cyclin D3/CCND3 antibody [SP207] - BSA and Azide free (ab245734)

Flow cytometric analysis of K562 (Human chronic myelogenous leukemia cell line from bone marrow) cells, labeling Cyclin D3/CCND3 with [ab183338](#) diluted 1/100 (green), compared with a negative control of anti-rabbit IgG (blue).

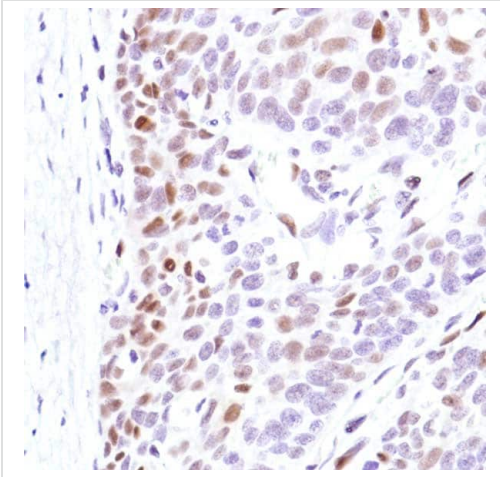
This data was developed using the same antibody clone in a different buffer formulation containing PBS, BSA and sodium azide ([ab183338](#)).



Immunohistochemistry (Formalin/PFA-fixed paraffin-embedded sections) - Anti-Cyclin D3/CCND3 antibody [SP207] - BSA and Azide free (ab245734)

Immunohistochemical analysis of paraffin-embedded human B-cell lymphoma tissue, labeling Cyclin D3/CCND3 with [ab183338](#) at 1/100 dilution.

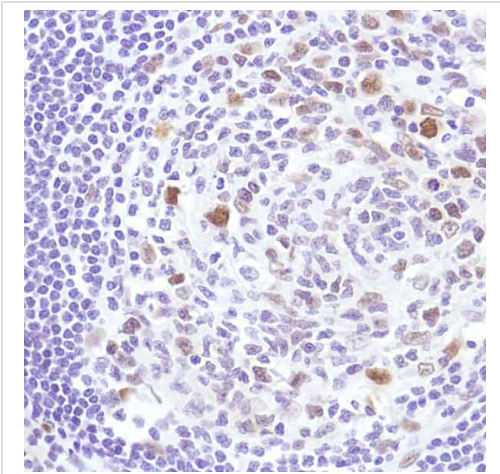
This data was developed using the same antibody clone in a different buffer formulation containing PBS, BSA and sodium azide ([ab183338](#)).



Immunohistochemistry (Formalin/PFA-fixed paraffin-embedded sections) - Anti-Cyclin D3/CCND3 antibody [SP207] - BSA and Azide free (ab245734)

Immunohistochemical analysis of paraffin-embedded human cervical squamous cell carcinoma tissue, labeling Cyclin D3/CCND3 with [ab183338](#) at 1/100 dilution.

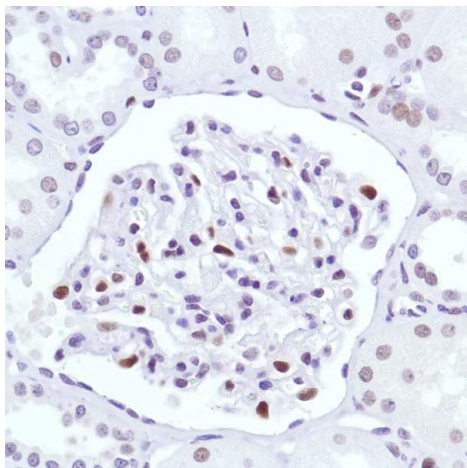
This data was developed using the same antibody clone in a different buffer formulation containing PBS, BSA and sodium azide ([ab183338](#)).



Immunohistochemistry (Formalin/PFA-fixed paraffin-embedded sections) - Anti-Cyclin D3/CCND3 antibody [SP207] - BSA and Azide free (ab245734)

Immunohistochemical analysis of paraffin-embedded human reactive lymph node tissue, labeling Cyclin D3/CCND3 with [ab183338](#) at 1/100 dilution.

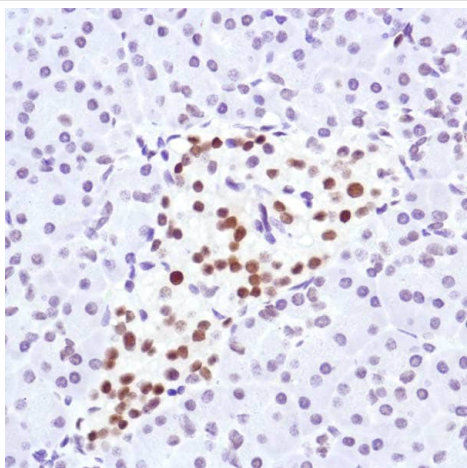
This data was developed using the same antibody clone in a different buffer formulation containing PBS, BSA and sodium azide ([ab183338](#)).



Immunohistochemistry (Formalin/PFA-fixed paraffin-embedded sections) - Anti-Cyclin D3/CCND3 antibody [SP207] - BSA and Azide free (ab245734)

Immunohistochemical analysis of paraffin-embedded human kidney tissue, labeling Cyclin D3/CCND3 with [ab183338](#) at 1/100 dilution.

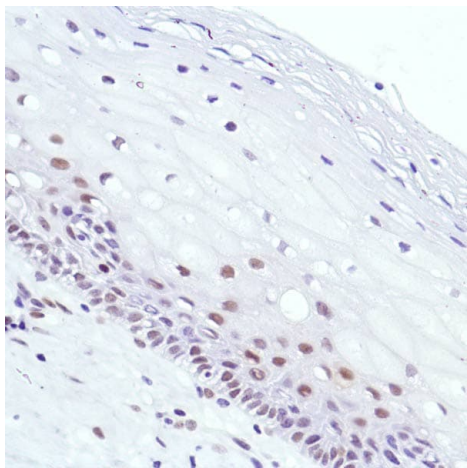
This data was developed using the same antibody clone in a different buffer formulation containing PBS, BSA and sodium azide ([ab183338](#)).



Immunohistochemistry (Formalin/PFA-fixed paraffin-embedded sections) - Anti-Cyclin D3/CCND3 antibody [SP207] - BSA and Azide free (ab245734)

Immunohistochemical analysis of paraffin-embedded human pancreas tissue, labeling Cyclin D3/CCND3 with [ab183338](#) at 1/100 dilution.

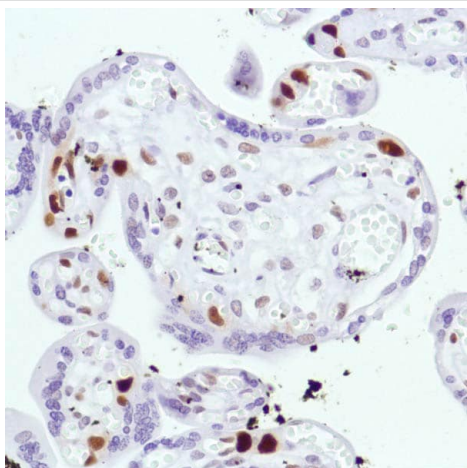
This data was developed using the same antibody clone in a different buffer formulation containing PBS, BSA and sodium azide ([ab183338](#)).



Immunohistochemistry (Formalin/PFA-fixed paraffin-embedded sections) - Anti-Cyclin D3/CCND3 antibody [SP207] - BSA and Azide free (ab245734)

Immunohistochemical analysis of paraffin-embedded human cervix tissue, labeling Cyclin D3/CCND3 with [ab183338](#) at 1/100 dilution.

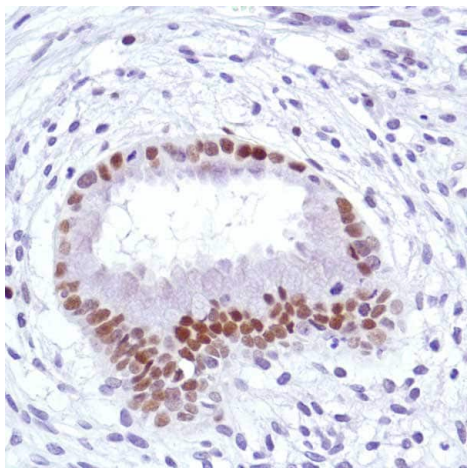
This data was developed using the same antibody clone in a different buffer formulation containing PBS, BSA and sodium azide ([ab183338](#)).



Immunohistochemistry (Formalin/PFA-fixed paraffin-embedded sections) - Anti-Cyclin D3/CCND3 antibody [SP207] - BSA and Azide free (ab245734)

Immunohistochemical analysis of paraffin-embedded human placenta tissue, labeling Cyclin D3/CCND3 with [ab183338](#) at 1/100 dilution.

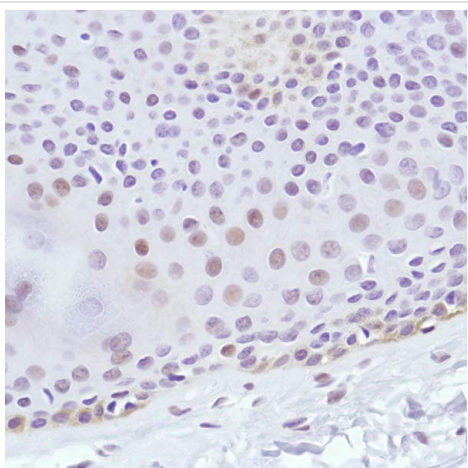
This data was developed using the same antibody clone in a different buffer formulation containing PBS, BSA and sodium azide ([ab183338](#)).



Immunohistochemistry (Formalin/PFA-fixed paraffin-embedded sections) - Anti-Cyclin D3/CCND3 antibody [SP207] - BSA and Azide free (ab245734)

Immunohistochemical analysis of paraffin-embedded human uterus tissue, labeling Cyclin D3/CCND3 with [ab183338](#) at 1/100 dilution.

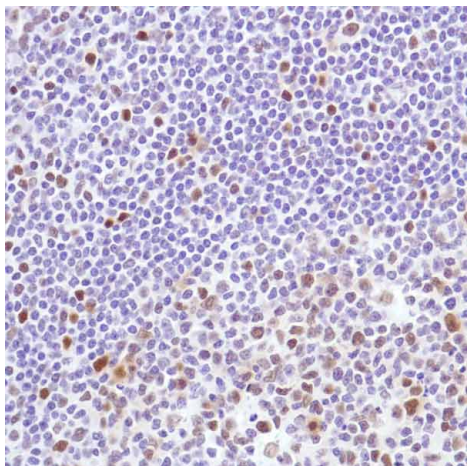
This data was developed using the same antibody clone in a different buffer formulation containing PBS, BSA and sodium azide ([ab183338](#)).



Immunohistochemistry (Formalin/PFA-fixed paraffin-embedded sections) - Anti-Cyclin D3/CCND3 antibody [SP207] - BSA and Azide free (ab245734)

Immunohistochemical analysis of paraffin-embedded human skin tissue, labeling Cyclin D3/CCND3 with [ab183338](#) at 1/100 dilution.

This data was developed using the same antibody clone in a different buffer formulation containing PBS, BSA and sodium azide ([ab183338](#)).



Immunohistochemical analysis of paraffin-embedded human tonsil tissue, labeling Cyclin D3/CCND3 with [ab183338](#) at 1/100 dilution.

This data was developed using the same antibody clone in a different buffer formulation containing PBS, BSA and sodium azide ([ab183338](#)).

Immunohistochemistry (Formalin/PFA-fixed paraffin-embedded sections) - Anti-Cyclin D3/CCND3 antibody [SP207] - BSA and Azide free (ab245734)

Why choose a recombinant antibody?



Research with confidence
Consistent and reproducible results



Long-term and scalable supply
Recombinant technology



Success from the first experiment
Confirmed specificity



Ethical standards compliant
Animal-free production

Anti-Cyclin D3/CCND3 antibody [SP207] - BSA and Azide free (ab245734)

Please note: All products are "FOR RESEARCH USE ONLY. NOT FOR USE IN DIAGNOSTIC PROCEDURES"

Our Abpromise to you: Quality guaranteed and expert technical support

- Replacement or refund for products not performing as stated on the datasheet
- Valid for 12 months from date of delivery
- Response to your inquiry within 24 hours
- We provide support in Chinese, English, French, German, Japanese and Spanish
- Extensive multi-media technical resources to help you
- We investigate all quality concerns to ensure our products perform to the highest standards

If the product does not perform as described on this datasheet, we will offer a refund or replacement. For full details of the Abpromise, please visit <https://www.abcam.com/abpromise> or contact our technical team.

Terms and conditions

- Guarantee only valid for products bought direct from Abcam or one of our authorized distributors