

Product datasheet

Anti-Cyclin E1 antibody [CCNE1/2460] ab238081

1 References 3 Images

Overview

Product name	Anti-Cyclin E1 antibody [CCNE1/2460]
Description	Mouse monoclonal [CCNE1/2460] to Cyclin E1
Host species	Mouse
Tested applications	Suitable for: IHC-P, PepArr
Species reactivity	Reacts with: Human
Immunogen	Recombinant fragment corresponding to Human Cyclin E1 aa 10-176. Database link: P24864
Positive control	IHC-P: Human colon carcinoma tissues.
General notes	<p>Reproducibility is key to advancing scientific discovery and accelerating scientists' next breakthrough.</p> <p>Abcam is leading the way with our range of recombinant antibodies, knockout-validated antibodies and knockout cell lines, all of which support improved reproducibility.</p> <p>We are also planning to innovate the way in which we present recommended applications and species on our product datasheets, so that only applications & species that have been tested in our own labs, our suppliers or by selected trusted collaborators are covered by our Abpromise™ guarantee.</p> <p>In preparation for this, we have started to update the applications & species that this product is Abpromise guaranteed for.</p> <p>We are also updating the applications & species that this product has been “predicted to work with,” however this information is not covered by our Abpromise guarantee.</p> <p>Applications & species from publications and Abreviews that have not been tested in our own labs or in those of our suppliers are not covered by the Abpromise guarantee.</p> <p>Please check that this product meets your needs before purchasing. If you have any questions, special requirements or concerns, please send us an inquiry and/or contact our Support team ahead of purchase. Recommended alternatives for this product can be found below, as well as customer reviews and Q&As.</p>

Properties

Form	Liquid
Storage instructions	Shipped at 4°C. Store at +4°C short term (1-2 weeks). Upon delivery aliquot. Store at -20°C long

term. Avoid freeze / thaw cycle.

Storage buffer

Preservative: 0.05% Sodium azide

Constituents: PBS, 0.05% BSA

Purity

Protein A/G purified

Purification notes

Purified from Bioreactor Concentrate by Protein A/G.

Clonality

Monoclonal

Clone number

CCNE1/2460

Isotype

IgG

Light chain type

kappa

Applications

Our [Abpromise guarantee](#) covers the use of **ab238081** in the following tested applications.

The application notes include recommended starting dilutions; optimal dilutions/concentrations should be determined by the end user.

Application	Abreviews	Notes
IHC-P		Use a concentration of 1 - 2 µg/ml. Perform heat mediated antigen retrieval with citrate buffer pH 6 before commencing with IHC staining protocol. Primary incubation for 30 minutes at room temperature.
PepArr		Use at an assay dependent concentration.

Target

Function

Essential for the control of the cell cycle at the G1/S (start) transition.

Tissue specificity

Highly expressed in testis and placenta. Low levels in bronchial epithelial cells.

Sequence similarities

Belongs to the cyclin family. Cyclin E subfamily.

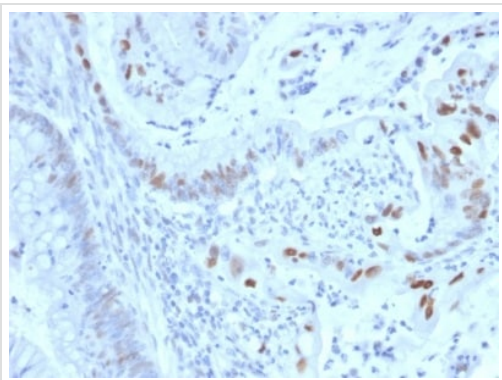
Post-translational modifications

Phosphorylation of Thr-395 by GSK3 and of Ser-399 by CDK2 accelerates degradation via the ubiquitin proteasome pathway. Phosphorylated upon DNA damage, probably by ATM or ATR.

Cellular localization

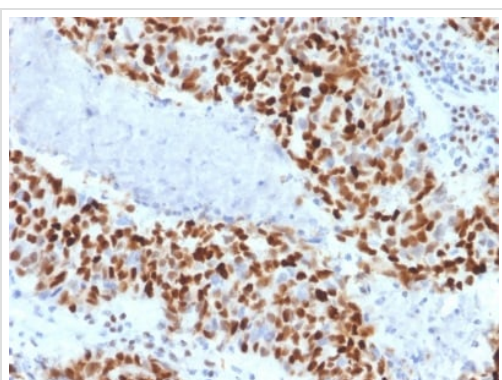
Nucleus.

Images



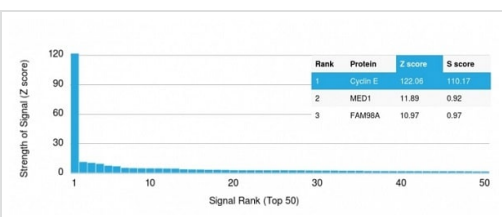
Immunohistochemistry (Formalin/PFA-fixed paraffin-embedded sections) - Anti-Cyclin E1 antibody [CCNE1/2460] (ab238081)

Formalin-fixed, paraffin-embedded human colon carcinoma tissue stained for Cyclin E1 using ab238081 at 2 µg/ml in immunohistochemical analysis.



Immunohistochemistry (Formalin/PFA-fixed paraffin-embedded sections) - Anti-Cyclin E1 antibody [CCNE1/2460] (ab238081)

Formalin-fixed, paraffin-embedded human colon carcinoma tissue stained for Cyclin E1 using ab238081 at 2 µg/ml in immunohistochemical analysis.



Peptide Array - Anti-Cyclin E1 antibody [CCNE1/2460] (ab238081)

Analysis of Protein Array containing more than 19,000 full-length human proteins using ab238081.

Z- and S- Score: The Z-score represents the strength of a signal that a monoclonal antibody (MAb) (in combination with a fluorescently-tagged anti-IgG secondary antibody) produces when binding to a particular protein on the HuProt™ array. Z-scores are described in units of standard deviations (SD's) above the mean value of all signals generated on that array. If targets on HuProt™ are arranged in descending order of the Z-score, the S-score is the difference (also in units of SD's) between the Z-score. S-score therefore represents the relative target specificity of a MAb to its intended target. A MAb is considered to specific to its intended target, if the MAb has an S-score of at least 2.5. For example, if a MAb binds to protein X with a Z-score of 43 and to protein Y with a Z-score of 14, then the S-score for the binding of that MAb to protein X is equal to 29.

Please note: All products are "FOR RESEARCH USE ONLY. NOT FOR USE IN DIAGNOSTIC PROCEDURES"

Our Abpromise to you: Quality guaranteed and expert technical support

- Replacement or refund for products not performing as stated on the datasheet
- Valid for 12 months from date of delivery
- Response to your inquiry within 24 hours

- We provide support in Chinese, English, French, German, Japanese and Spanish
- Extensive multi-media technical resources to help you
- We investigate all quality concerns to ensure our products perform to the highest standards

If the product does not perform as described on this datasheet, we will offer a refund or replacement. For full details of the Abpromise, please visit <https://www.abcam.com/abpromise> or contact our technical team.

Terms and conditions

- Guarantee only valid for products bought direct from Abcam or one of our authorized distributors