




Product datasheet

Anti-Cyclin T1 antibody ab176702

1 References 2 Images

Overview

Product name	Anti-Cyclin T1 antibody
Description	Rabbit polyclonal to Cyclin T1
Host species	Rabbit
Tested applications	Suitable for: IHC-P, IP, WB
Species reactivity	Reacts with: Human Predicted to work with: Chimpanzee, Cynomolgus monkey, Rhesus monkey, Gorilla, Orangutan 
Immunogen	Synthetic peptide within Human Cyclin T1 aa 625-675. The exact sequence is proprietary. Sequence: FSQPSCKTRVPHSKLDKGPTGANGHNTTQTIDYQDTV NMLHSLLSAQGVQ P Database link: O60563  Run BLAST with  Run BLAST with
Positive control	HeLa and 293T whole cell lysates.

Properties

Form	Liquid
Storage instructions	Shipped at 4°C. Store at +4°C short term (1-2 weeks). Upon delivery aliquot. Store at -20°C long term. Avoid freeze / thaw cycle.
Storage buffer	Preservative: 0.09% Sodium azide Constituents: 0.1% BSA, 99% Tris buffered saline
Purity	Immunogen affinity purified
Clonality	Polyclonal
Isotype	IgG

Applications

Our [Abpromise guarantee](#) covers the use of **ab176702** in the following tested applications.

The application notes include recommended starting dilutions; optimal dilutions/concentrations should be determined by the end user.

Application	Abreviews	Notes
IHC-P		Use at an assay dependent concentration.
IP		Use at 2-10 µg/mg of lysate.
WB		1/2000 - 1/10000. Predicted molecular weight: 81 kDa.

Target

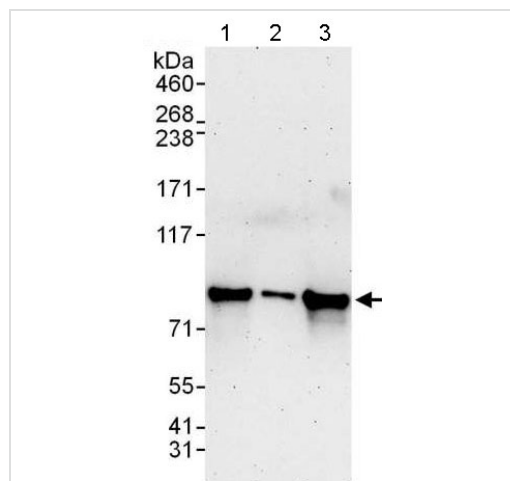
Function Regulatory subunit of the cyclin-dependent kinase pair (CDK9/cyclin-T1) complex, also called positive transcription elongation factor B (P-TEFb), which is proposed to facilitate the transition from abortive to productive elongation by phosphorylating the CTD (carboxy-terminal domain) of the large subunit of RNA polymerase II (RNA Pol II). In case of HIV or SIV infections, binds to the transactivation domain of the viral nuclear transcriptional activator, Tat, thereby increasing Tat's affinity for the transactivating response RNA element (TAR RNA). Serves as an essential cofactor for Tat, by promoting RNA Pol II activation, allowing transcription of viral genes.

Tissue specificity Ubiquitously expressed.

Sequence similarities Belongs to the cyclin family. Cyclin C subfamily.

Cellular localization Nucleus.

Images



Western blot - Anti-Cyclin T1 antibody (ab176702)

All lanes : Anti-Cyclin T1 antibody (ab176702) at 0.04 µg/ml

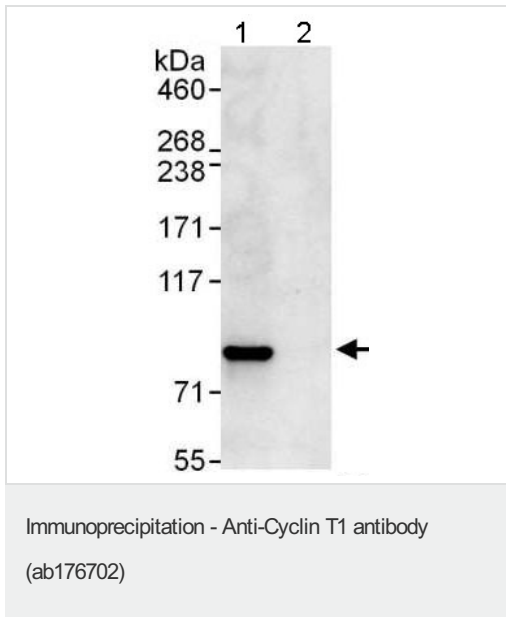
Lane 1 : HeLa whole cell lysate at 50 µg

Lane 2 : HeLa whole cell lysate at 15 µg

Lane 3 : 293T whole cell lysate at 50 µg

Predicted band size: 81 kDa

Exposure time: 3 minutes



Detection of Cyclin T1 by Western Blot of Immunoprecipitate.

Lane 1: ab176702 at 0.04µg/ml labeling Cyclin T1 in HeLa whole cell lysate immunoprecipitated using ab176702 at 6µg/mg lysate (1 mg/IP; 20% of IP loaded/lane). Lane 2: Control IgG

Detection: Chemiluminescence with exposure time of 3 seconds.

Please note: All products are "FOR RESEARCH USE ONLY. NOT FOR USE IN DIAGNOSTIC PROCEDURES"

Our Abpromise to you: Quality guaranteed and expert technical support

- Replacement or refund for products not performing as stated on the datasheet
- Valid for 12 months from date of delivery
- Response to your inquiry within 24 hours
- We provide support in Chinese, English, French, German, Japanese and Spanish
- Extensive multi-media technical resources to help you
- We investigate all quality concerns to ensure our products perform to the highest standards

If the product does not perform as described on this datasheet, we will offer a refund or replacement. For full details of the Abpromise, please visit <https://www.abcam.com/abpromise> or contact our technical team.

Terms and conditions

- Guarantee only valid for products bought direct from Abcam or one of our authorized distributors