


Product datasheet

Anti-Cyclophilin A antibody ab42408

★★★★★ 5 Abreviews 6 References 3 Images

Overview

Product name	Anti-Cyclophilin A antibody
Description	Rabbit polyclonal to Cyclophilin A
Host species	Rabbit
Tested applications	Suitable for: WB, ICC/IF
Species reactivity	Reacts with: Mouse, Rat, Human Predicted to work with: Rabbit, Cow, Dog, Pig, Chimpanzee, Monkey, Gorilla, Chinese hamster, Orangutan 
Immunogen	Synthetic peptide corresponding to Human Cyclophilin A aa 1-100. (Peptide available as ab42407)

General notes

Reproducibility is key to advancing scientific discovery and accelerating scientists' next breakthrough.

Abcam is leading the way with our range of recombinant antibodies, knockout-validated antibodies and knockout cell lines, all of which support improved reproducibility.

We are also planning to innovate the way in which we present recommended applications and species on our product datasheets, so that only applications & species that have been tested in our own labs, our suppliers or by selected trusted collaborators are covered by our Abpromise™ guarantee.

In preparation for this, we have started to update the applications & species that this product is Abpromise guaranteed for.

We are also updating the applications & species that this product has been “predicted to work with,” however this information is not covered by our Abpromise guarantee.

Applications & species from publications and Abreviews that have not been tested in our own labs or in those of our suppliers are not covered by the Abpromise guarantee.

Please check that this product meets your needs before purchasing. If you have any questions, special requirements or concerns, please send us an inquiry and/or contact our Support team ahead of purchase. Recommended alternatives for this product can be found below, as well as customer reviews and Q&As.

Properties

Form	Liquid
-------------	--------

Storage instructions Shipped at 4°C. Store at +4°C short term (1-2 weeks). Upon delivery aliquot. Store at -20°C or -80°C. Avoid freeze / thaw cycle.

Storage buffer pH: 7.40
Preservative: 0.02% Sodium azide
Constituent: PBS

Batches of this product that have a concentration < 1mg/ml may have BSA added as a stabilising agent. If you would like information about the formulation of a specific lot, please contact our scientific support team who will be happy to help.

Purity Immunogen affinity purified

Clonality Polyclonal

Isotype IgG

Applications

Our [Abpromise guarantee](#) covers the use of **ab42408** in the following tested applications.

The application notes include recommended starting dilutions; optimal dilutions/concentrations should be determined by the end user.

Application	Abreviews	Notes
WB	★★★★★	
ICC/IF		

Application notes ICC/IF: Use at a concentration of 5 µg/ml.
IHC-P: Use at in the range of 1/100 - 1/500 depending on incubation time/ conditions of primary.
WB: Use at a concentration of 1 µg/ml. Detects a band of approximately 18 kDa (predicted molecular weight: 18 kDa).

Not yet tested in other applications.
Optimal dilutions/concentrations should be determined by the end user.

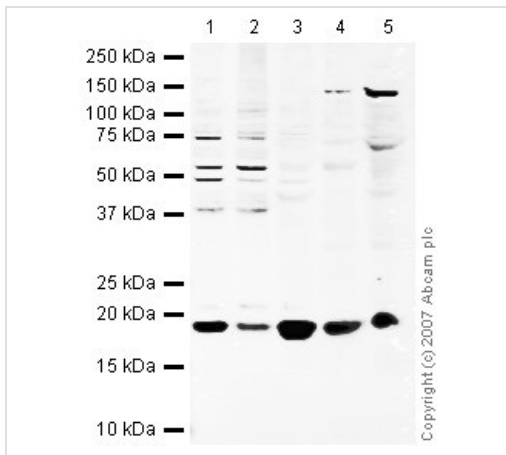
Target

Function PPlases accelerate the folding of proteins. It catalyzes the cis-trans isomerization of proline imidic peptide bonds in oligopeptides.

Sequence similarities Belongs to the cyclophilin-type PPlase family. PPlase A subfamily.
Contains 1 PPlase cyclophilin-type domain.

Cellular localization Cytoplasm.

Images



Western blot - Anti-Cyclophilin A antibody (ab42408)

All lanes : Anti-Cyclophilin A antibody (ab42408) at 1 µg/ml

Lane 1 : HeLa (Human epithelial carcinoma cell line) Whole Cell Lysate

Lane 2 : A431 (Human epithelial carcinoma cell line) Whole Cell Lysate

Lane 3 : Human lymph node tissue lysate - total protein ([ab29871](#))

Lane 4 : Human thymus tissue lysate - total protein ([ab30146](#))

Lane 5 : Lung (Rat) Tissue Lysate

Lysates/proteins at 10 µg per lane.

Secondary

All lanes : IRDye 680 Conjugated Goat Anti-Rabbit IgG (H+L) at 1/10000 dilution

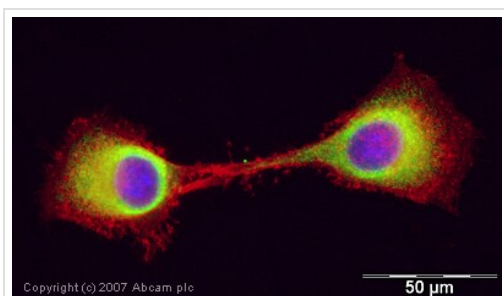
Performed under reducing conditions.

Predicted band size: 18 kDa

Observed band size: 18 kDa



Western blot - Anti-Cyclophilin A antibody (ab42408)



Immunocytochemistry/ Immunofluorescence - Anti-Cyclophilin A antibody (ab42408)

ICC/IF image of ab42408 stained human HeLa cells. The cells were PFA fixed (10 min), permeabilised in TBS-T (20 min) and incubated with the antibody (ab42408, 5 μ g/ml) for 1h at room temperature. 1%BSA / 10% normal goat serum / 0.3M glycine was used to quench autofluorescence and block non-specific protein-protein interactions. The secondary antibody (green) was Alexa Fluor® 488 goat anti-rabbit IgG (H+L) used at a 1/1000 dilution for 1h. Alexa Fluor® 594 WGA was used to label plasma membranes (red). DAPI was used to stain the cell nuclei (blue).

Please note: All products are "FOR RESEARCH USE ONLY. NOT FOR USE IN DIAGNOSTIC PROCEDURES"

Our Abpromise to you: Quality guaranteed and expert technical support

- Replacement or refund for products not performing as stated on the datasheet
- Valid for 12 months from date of delivery
- Response to your inquiry within 24 hours
- We provide support in Chinese, English, French, German, Japanese and Spanish
- Extensive multi-media technical resources to help you
- We investigate all quality concerns to ensure our products perform to the highest standards

If the product does not perform as described on this datasheet, we will offer a refund or replacement. For full details of the Abpromise, please visit <https://www.abcam.com/abpromise> or contact our technical team.

Terms and conditions

- Guarantee only valid for products bought direct from Abcam or one of our authorized distributors