

Product datasheet

Anti-Cyclophilin A antibody ab58144

★★★★★ 2 Abreviews 14 References 5 Images

Overview

Product name	Anti-Cyclophilin A antibody
Description	Mouse monoclonal to Cyclophilin A
Host species	Mouse
Tested applications	Suitable for: WB, ICC/IF, IP, Flow Cyt
Species reactivity	Reacts with: Human
Immunogen	Recombinant full length protein corresponding to Human Cyclophilin A aa 1-165.
General notes	<p>This product was changed from ascites to tissue culture supernatant on 22/03/2019. Please note that the dilutions may need to be adjusted accordingly. If you have any questions, please do not hesitate to contact our scientific support team.</p> <p>Reproducibility is key to advancing scientific discovery and accelerating scientists' next breakthrough.</p> <p>Abcam is leading the way with our range of recombinant antibodies, knockout-validated antibodies and knockout cell lines, all of which support improved reproducibility.</p> <p>We are also planning to innovate the way in which we present recommended applications and species on our product datasheets, so that only applications & species that have been tested in our own labs, our suppliers or by selected trusted collaborators are covered by our Abpromise™ guarantee.</p> <p>In preparation for this, we have started to update the applications & species that this product is Abpromise guaranteed for.</p> <p>We are also updating the applications & species that this product has been "predicted to work with," however this information is not covered by our Abpromise guarantee.</p> <p>Applications & species from publications and Abreviews that have not been tested in our own labs or in those of our suppliers are not covered by the Abpromise guarantee.</p> <p>Please check that this product meets your needs before purchasing. If you have any questions, special requirements or concerns, please send us an inquiry and/or contact our Support team ahead of purchase. Recommended alternatives for this product can be found below, as well as customer reviews and Q&As.</p>

Properties

Form	Liquid
-------------	--------

Storage instructions	Shipped at 4°C. Upon delivery aliquot and store at -20°C or -80°C. Avoid repeated freeze / thaw cycles.
Storage buffer	pH: 7.4
Purity	Tissue culture supernatant
Clonality	Monoclonal
Isotype	IgG2a
Light chain type	kappa

Applications

Our [Abpromise guarantee](#) covers the use of **ab58144** in the following tested applications.

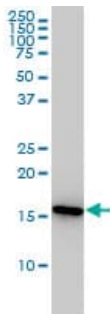
The application notes include recommended starting dilutions; optimal dilutions/concentrations should be determined by the end user.

Application	Abreviews	Notes
WB	★★★★☆	Use at an assay dependent concentration. Predicted molecular weight: 18 kDa.
ICC/IF		Use at an assay dependent concentration.
IP		Use at an assay dependent concentration.
Flow Cyt		Use at an assay dependent concentration. ab170191 - Mouse monoclonal IgG2a, is suitable for use as an isotype control with this antibody.

Target

Function	PPlases accelerate the folding of proteins. It catalyzes the cis-trans isomerization of proline imidic peptide bonds in oligopeptides.
Sequence similarities	Belongs to the cyclophilin-type PPlase family. PPlase A subfamily. Contains 1 PPlase cyclophilin-type domain.
Cellular localization	Cytoplasm.

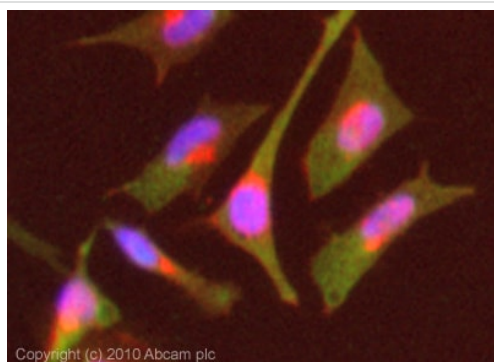
Images



Western blot - Anti-Cyclophilin A antibody (ab58144)

Cyclophilin A antibody (ab58144) at 1ug/lane + Jurkat cell lysate at 25ug/lane.

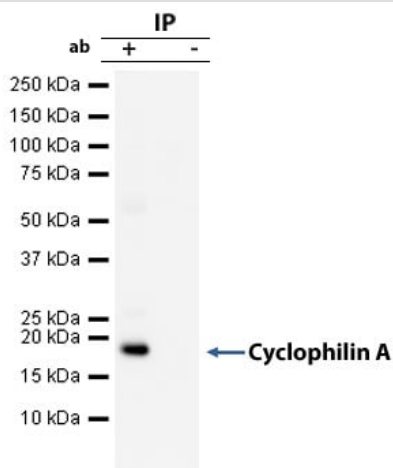
This image was generated using the ascites version of the product.



Immunocytochemistry/ Immunofluorescence - Anti-Cyclophilin A antibody (ab58144)

ICC/IF image of ab58144 stained HeLa cells. The cells were 4% formaldehyde fixed (10 min) and then incubated in 1%BSA / 10% normal goat serum / 0.3M glycine in 0.1% PBS-Tween for 1h to permeabilise the cells and block non-specific protein-protein interactions. The cells were then incubated with the antibody (ab58144, 1µg/ml) overnight at +4°C. The secondary antibody (green) was Alexa Fluor® 488 goat anti-mouse IgG (H+L) used at a 1/1000 dilution for 1h. Alexa Fluor® 594 WGA was used to label plasma membranes (red) at a 1/200 dilution for 1h. DAPI was used to stain the cell nuclei (blue) at a concentration of 1.43µM.

This image was generated using the ascites version of the product.



Immunoprecipitation - Anti-Cyclophilin A antibody (ab58144)

Cyclophilin A was immunoprecipitated using 0.5mg Hela whole cell extract, 10µg of Mouse monoclonal to Cyclophilin A and 50µl of protein G magnetic beads (+). No antibody was added to the control (-).

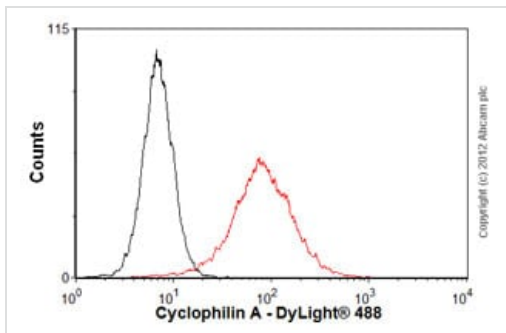
The antibody was incubated under agitation with Protein G beads for 10min, Hela whole cell extract lysate diluted in RIPA buffer was added to each sample and incubated for a further 10min under agitation.

Proteins were eluted by addition of 40µl SDS loading buffer and incubated for 10min at 70°C; 10µl of each sample was separated on a SDS PAGE gel, transferred to a nitrocellulose membrane, blocked with 5% BSA and probed with ab58144.

Secondary: Protein G-HRP at 1/500 dilution.

Band: 18kDa: Cyclophilin A.

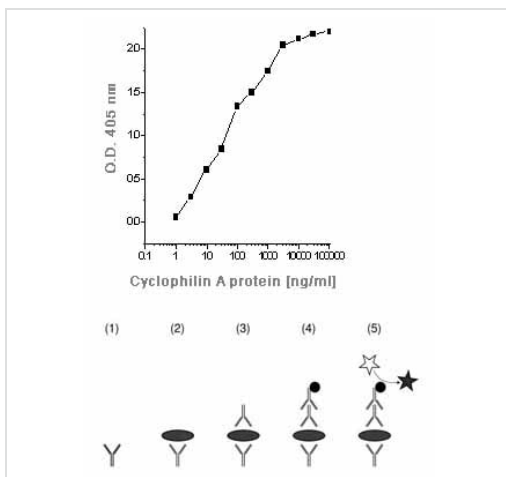
This image was generated using the ascites version of the product.



Flow Cytometry - Anti-Cyclophilin A antibody (ab58144)

Overlay histogram showing HeLa cells stained with ab58144 (red line). The cells were fixed with 4% paraformaldehyde and then permeabilized with 0.1% PBS-Tween for 20 min. The cells were then incubated in 1x PBS / 10% normal goat serum / 0.3M glycine to block non-specific protein-protein interactions followed by the antibody (ab58144, 0.5µg/1x10⁶ cells) for 30 min at 22°C. The secondary antibody used was DyLight® 488 goat anti-mouse IgG (H+L) (ab96879) at 1/500 dilution for 30 min at 22°C. Isotype control antibody (black line) was mouse IgG2a [ICIGG2A] (ab91361, 1µg/1x10⁶ cells) used under the same conditions. Acquisition of >5,000 events was performed.

This image was generated using the ascites version of the product.



ELISA - Anti-Cyclophilin A antibody (ab58144)
This image is courtesy of an anonymous Abreview

This image shows an ELISA analysis of ab58144.

PBMC huh-7 cells were incubated with medium + 10% FCS. At the end of the incubation the supernatant was collected and cells washed with cold PBS. Cells were scrapped and lysate generated. The cell lysate and extracellular medium were assayed for Cyclophilin A content in a sandwich ELISA. The primary antibody was diluted 1/1500 and incubated with the sample for 24 hours at 4°C. Ab6729 was diluted 1/2000.

This image was generated using the ascites version of the product.

Key for lower diagram:

- 1) Rabbit anti-Cyclophilin A (ab3563)
- 2) Cells samples or Std (ab56523)
- 3) Mouse anti-Cyclophilin A (ab58144)
- 4) Rabbit anti-mouse Alkaline Phosphatase (ab6729)
- 5) Substrate of Alkaline Phosphatase

Standards = Recombinant protein Cyclophilin A (ab56523)

Please note: All products are "FOR RESEARCH USE ONLY. NOT FOR USE IN DIAGNOSTIC PROCEDURES"

Our Abpromise to you: Quality guaranteed and expert technical support

- Replacement or refund for products not performing as stated on the datasheet
- Valid for 12 months from date of delivery
- Response to your inquiry within 24 hours

- We provide support in Chinese, English, French, German, Japanese and Spanish
- Extensive multi-media technical resources to help you
- We investigate all quality concerns to ensure our products perform to the highest standards

If the product does not perform as described on this datasheet, we will offer a refund or replacement. For full details of the Abpromise, please visit <https://www.abcam.com/abpromise> or contact our technical team.

Terms and conditions

- Guarantee only valid for products bought direct from Abcam or one of our authorized distributors