

Product datasheet

Anti-CYP21A2 antibody ab232809

8 Images

Overview

Product name	Anti-CYP21A2 antibody
Description	Rabbit polyclonal to CYP21A2
Host species	Rabbit
Tested applications	Suitable for: WB, IHC-P
Species reactivity	Reacts with: Rat, Human
Immunogen	<p>Recombinant fragment (His-tag) corresponding to Human CYP21A2 aa 106-389. (Expressed in E.coli)</p> <p>Sequence:</p> <p>DLSLGDYSLWKAHKLTRSALLLGIRDSMEPVVEQLT QEFCERMRAQPG TPVAIEEEFSLTCSIICYLTFGDKIKDDNLMPAYYKCIQE VLKTWSHWS IQVDVIPFLRFFPNPGLRRLKQAIEKRDHIVEMQLRQHK ESLVAGQWRD MMDYMLQGVAQPSMEEGSGQLLEGHVHMAAVDLLIG GTETTANTLSWAVV FLLHHPFIQRLQEELDHGPGASSSRVPYKDRARL PLLNATIAEVLRL RPVVPLALPHRTRPSSISGYDIPEGTVIIPNLQ</p>

Database link: [P08686](#)

 [Run BLAST with](#)

 [Run BLAST with](#)

Positive control	WB: Recombinant human CYP21A2 and rat adrenal gland tissue. IHC-P: Human skin cancer, breast cancer, glioma, stomach cancer, bile duct cancer and pancreatic cancer tissues.
-------------------------	--

Properties

Form	Liquid
Storage instructions	Shipped at 4°C. Store at +4°C short term (1-2 weeks). Upon delivery aliquot. Store at -20°C long term. Avoid freeze / thaw cycle.
Storage buffer	<p>pH: 7.40</p> <p>Preservative: 0.02% Sodium azide</p> <p>Constituents: PBS, 50% Glycerol</p>

Purity	Immunogen affinity purified
Clonality	Polyclonal
Isotype	IgG

Applications

Our [Abpromise guarantee](#) covers the use of **ab232809** in the following tested applications.

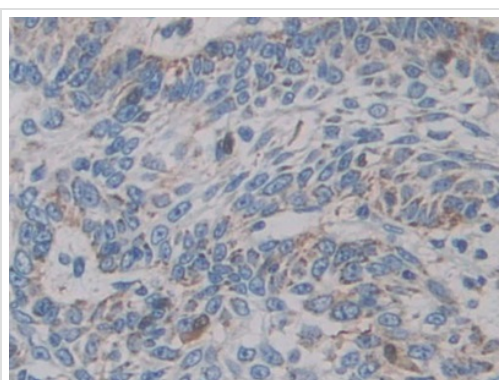
The application notes include recommended starting dilutions; optimal dilutions/concentrations should be determined by the end user.

Application	Abreviews	Notes
WB		Use a concentration of 0.5 - 2 µg/ml. Predicted molecular weight: 56 kDa.
IHC-P		Use a concentration of 5 - 20 µg/ml.

Target

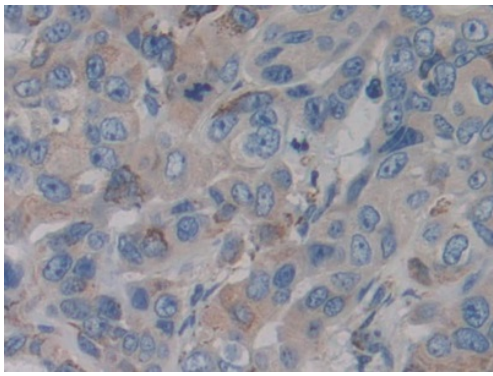
Function	Specifically catalyzes the 21-hydroxylation of steroids. Required for the adrenal synthesis of mineralocorticoids and glucocorticoids.
Involvement in disease	Adrenal hyperplasia 3
Sequence similarities	Belongs to the cytochrome P450 family.
Domain	The leucine-rich hydrophobic amino acid N-terminal region probably helps to anchor the protein to the microsomal membrane.
Cellular localization	Endoplasmic reticulum membrane. Microsome membrane.

Images



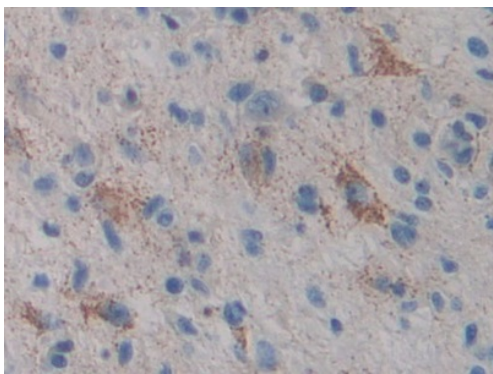
Formalin-fixed, paraffin-embedded human skin cancer tissue stained for CYP21A2 using ab232809 at 20µg/ml in immunohistochemical analysis.

Immunohistochemistry (Formalin/PFA-fixed paraffin-embedded sections) - Anti-CYP21A2 antibody (ab232809)



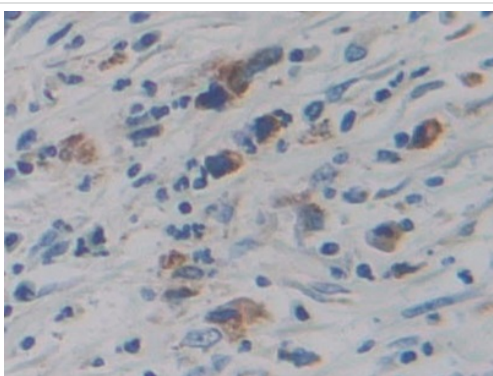
Immunohistochemistry (Formalin/PFA-fixed paraffin-embedded sections) - Anti-CYP21A2 antibody (ab232809)

Formalin-fixed, paraffin-embedded human breast cancer tissue stained for CYP21A2 using ab232809 at 20µg/ml in immunohistochemical analysis.



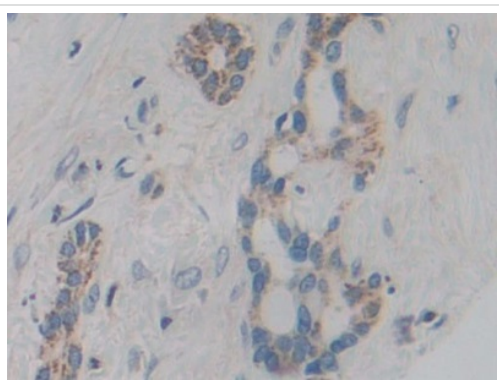
Immunohistochemistry (Formalin/PFA-fixed paraffin-embedded sections) - Anti-CYP21A2 antibody (ab232809)

Formalin-fixed, paraffin-embedded human glioma tissue stained for CYP21A2 using ab232809 at 20µg/ml in immunohistochemical analysis.



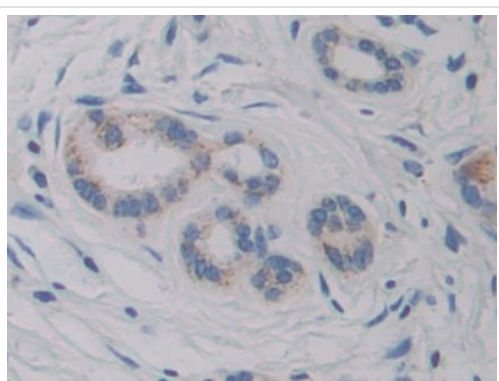
Immunohistochemistry (Formalin/PFA-fixed paraffin-embedded sections) - Anti-CYP21A2 antibody (ab232809)

Formalin-fixed, paraffin-embedded human stomach cancer tissue stained for CYP21A2 using ab232809 at 20µg/ml in immunohistochemical analysis.



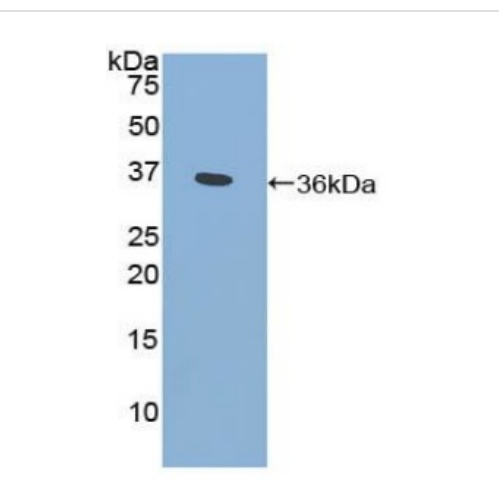
Immunohistochemistry (Formalin/PFA-fixed paraffin-embedded sections) - Anti-CYP21A2 antibody (ab232809)

Formalin-fixed, paraffin-embedded human bile duct cancer tissue stained for CYP21A2 using ab232809 at 20µg/ml in immunohistochemical analysis.



Immunohistochemistry (Formalin/PFA-fixed paraffin-embedded sections) - Anti-CYP21A2 antibody (ab232809)

Formalin-fixed, paraffin-embedded human pancreatic cancer tissue stained for CYP21A2 using ab232809 at 20µg/ml in immunohistochemical analysis.

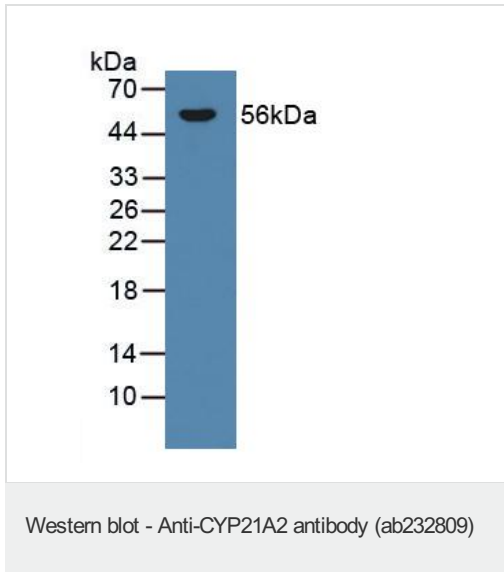


Western blot - Anti-CYP21A2 antibody (ab232809)

Anti-CYP21A2 antibody (ab232809) at 2 µg/ml + Recombinant human CYP21A2

Developed using the ECL technique.

Predicted band size: 56 kDa



Anti-CYP21A2 antibody (ab232809) at 2 µg/ml + Rat adrenal gland tissue

Developed using the ECL technique.

Predicted band size: 56 kDa

Please note: All products are "FOR RESEARCH USE ONLY. NOT FOR USE IN DIAGNOSTIC PROCEDURES"

Our Abpromise to you: Quality guaranteed and expert technical support

- Replacement or refund for products not performing as stated on the datasheet
- Valid for 12 months from date of delivery
- Response to your inquiry within 24 hours
- We provide support in Chinese, English, French, German, Japanese and Spanish
- Extensive multi-media technical resources to help you
- We investigate all quality concerns to ensure our products perform to the highest standards

If the product does not perform as described on this datasheet, we will offer a refund or replacement. For full details of the Abpromise, please visit <https://www.abcam.com/abpromise> or contact our technical team.

Terms and conditions

- Guarantee only valid for products bought direct from Abcam or one of our authorized distributors