

Product datasheet

Anti-CYP2A6 antibody [F16 P2 D8] ab56069

1 References 2 Images

Overview

Product name	Anti-CYP2A6 antibody [F16 P2 D8]
Description	Mouse monoclonal [F16 P2 D8] to CYP2A6
Host species	Mouse
Tested applications	Suitable for: WB, ELISA, IHC-P, ICC/IF
Species reactivity	Reacts with: Human
Immunogen	Synthetic peptide corresponding to Human CYP2A6 (C terminal) conjugated to ovalbumin.
General notes	This product was previously labelled as Cytochrome P450 2A6

Properties

Form	Liquid
Storage instructions	Shipped at 4°C. Upon delivery aliquot and store at -20°C or -80°C. Avoid repeated freeze / thaw cycles.
Storage buffer	Preservative: 0.08% Sodium azide Constituent: PBS
Purity	Protein G purified
Clonality	Monoclonal
Clone number	F16 P2 D8
Myeloma	Ag8.653
Isotype	IgG1

Applications

Our [Abpromise guarantee](#) covers the use of **ab56069** in the following tested applications.

The application notes include recommended starting dilutions; optimal dilutions/concentrations should be determined by the end user.

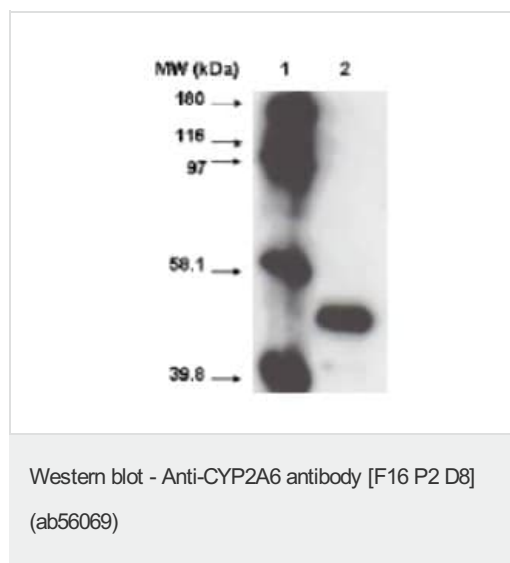
Application	Abreviews	Notes
-------------	-----------	-------

Application	Abreviews	Notes
WB		Use a concentration of 1 - 2 µg/ml. Detects a band of approximately 54 kDa (predicted molecular weight: 57 kDa).
ELISA		Use at an assay dependent concentration.
IHC-P		Use a concentration of 1 µg/ml.
ICC/IF		Use at an assay dependent concentration.

Target

Function	Exhibits a high coumarin 7-hydroxylase activity. Can act in the hydroxylation of the anti-cancer drugs cyclophosphamide and ifosphamide. Competent in the metabolic activation of aflatoxin B1. Constitutes the major nicotine C-oxidase. Possesses low phenacetin O-deethylation activity.
Tissue specificity	Liver.
Sequence similarities	Belongs to the cytochrome P450 family.
Cellular localization	Endoplasmic reticulum membrane. Microsome membrane.

Images

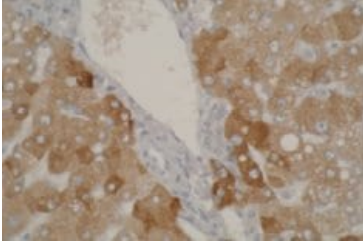


Anti-CYP2A6 antibody [F16 P2 D8] (ab56069) at 1 µg/ml

Predicted band size: 57 kDa

Observed band size: 54 kDa

[why is the actual band size different from the predicted?](#)



This image shows normal human liver tissue stained by ab56069 at 1 µg/ml.

Immunohistochemistry (Formalin/PFA-fixed paraffin-embedded sections) - Anti-CYP2A6 antibody [F16 P2 D8] (ab56069)

Please note: All products are "FOR RESEARCH USE ONLY. NOT FOR USE IN DIAGNOSTIC PROCEDURES"

Our Abpromise to you: Quality guaranteed and expert technical support

- Replacement or refund for products not performing as stated on the datasheet
- Valid for 12 months from date of delivery
- Response to your inquiry within 24 hours
- We provide support in Chinese, English, French, German, Japanese and Spanish
- Extensive multi-media technical resources to help you
- We investigate all quality concerns to ensure our products perform to the highest standards

If the product does not perform as described on this datasheet, we will offer a refund or replacement. For full details of the Abpromise, please visit <https://www.abcam.com/abpromise> or contact our technical team.

Terms and conditions

- Guarantee only valid for products bought direct from Abcam or one of our authorized distributors