




Product datasheet

Anti-CYP7B1 antibody ab19043

1 References 1 Image

Overview

Product name	Anti-CYP7B1 antibody
Description	Goat polyclonal to CYP7B1
Host species	Goat
Tested applications	Suitable for: IHC-P, WB
Species reactivity	<p>Predicted to work with: Cow, Human </p>
Immunogen	<p>Synthetic peptide corresponding to Human CYP7B1 aa 493-506 (C terminal). Sequence: YPDSDVLFRYKVKS</p> <p>Database link: O75881</p> <p style="text-align: right;"> Run BLAST with  Run BLAST with</p>
Positive control	Human Breast tissue.

Properties

Form	Liquid
Storage instructions	Shipped at 4°C. Upon delivery aliquot and store at -20°C. Avoid freeze / thaw cycles.
Storage buffer	Preservative: 0.02% Sodium Azide Constituents: 0.5% BSA, Tris buffered saline. pH 7.3
Purity	Immunogen affinity purified
Purification notes	Purified from goat serum by ammonium sulphate precipitation followed by antigen affinity chromatography using the immunizing peptide.
Clonality	Polyclonal
Isotype	IgG

Applications

Our [Abpromise guarantee](#) covers the use of **ab19043** in the following tested applications.

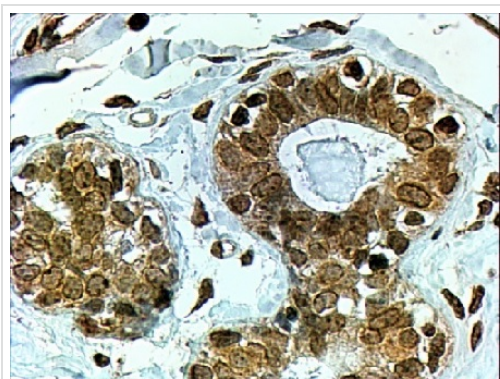
The application notes include recommended starting dilutions; optimal dilutions/concentrations should be determined by the end user.

Application	Abreviews	Notes
IHC-P		Use a concentration of 3 - 6 µg/ml.
WB		Use at an assay dependent dilution. PubMed: 19729835

Target

Tissue specificity	Brain, testis, ovary, prostate, liver, colon, kidney, and small intestine.
Pathway	Lipid metabolism; bile acid biosynthesis.
Involvement in disease	<p>Defects in CYP7B1 are the cause of spastic paraplegia autosomal recessive type 5A (SPG5A) [MIM:270800]. Spastic paraplegia is a neurodegenerative disorder characterized by a slow, gradual, progressive weakness and spasticity of the lower limbs. Rate of progression and the severity of symptoms are quite variable. Initial symptoms may include difficulty with balance, weakness and stiffness in the legs, muscle spasms, and dragging the toes when walking. In some forms of the disorder, bladder symptoms (such as incontinence) may appear, or the weakness and stiffness may spread to other parts of the body.</p> <p>Defects in CYP7B1 are the cause of congenital bile acid synthesis defect type 3 (CBAS3) [MIM:613812]. Clinical features include severe cholestasis, cirrhosis and liver synthetic failure. Hepatic microsomal oxysterol 7-alpha-hydroxylase activity is undetectable.</p>
Sequence similarities	Belongs to the cytochrome P450 family.
Cellular localization	Endoplasmic reticulum membrane. Microsome membrane.

Images



Immunohistochemistry (Formalin/PFA-fixed paraffin-embedded sections) - Anti-CYP7B1 antibody (ab19043)

ab19043 at 4µg/ml, staining CYP7B1 in Human Breast tissue sections by Immunohistochemistry (Formalin/PFA-fixed paraffin-embedded sections). Image shows textured cytoplasm staining in ductal epithelial cells. Steamed antigen retrieval with pH 6 citrate buffer was performed, and HRP-staining was used.

Please note: All products are "FOR RESEARCH USE ONLY AND ARE NOT INTENDED FOR DIAGNOSTIC OR THERAPEUTIC USE"

Our Abpromise to you: Quality guaranteed and expert technical support

- Replacement or refund for products not performing as stated on the datasheet
- Valid for 12 months from date of delivery
- Response to your inquiry within 24 hours

- We provide support in Chinese, English, French, German, Japanese and Spanish
- Extensive multi-media technical resources to help you
- We investigate all quality concerns to ensure our products perform to the highest standards

If the product does not perform as described on this datasheet, we will offer a refund or replacement. For full details of the Abpromise, please visit <https://www.abcam.com/abpromise> or contact our technical team.

Terms and conditions

- Guarantee only valid for products bought direct from Abcam or one of our authorized distributors