


Product datasheet

Anti-CYTH4 antibody - N-terminal ab227003

1 Image

Overview

Product name	Anti-CYTH4 antibody - N-terminal
Description	Rabbit polyclonal to CYTH4 - N-terminal
Host species	Rabbit
Tested applications	Suitable for: WB
Species reactivity	Reacts with: Human Predicted to work with: Rhesus monkey 
Immunogen	Synthetic peptide within Human CYTH4 (N terminal). The exact sequence is proprietary. Conjugated to a carrier protein. Database link: Q9UIA0
Positive control	WB: CYTH4 transfected HEK-293T cell lysate.
General notes	This product was previously labelled as PSCD4

Properties

Form	Liquid
Storage instructions	Shipped at 4°C. Store at +4°C short term (1-2 weeks). Upon delivery aliquot. Store at -20°C long term. Avoid freeze / thaw cycle.
Storage buffer	pH: 7.00 Preservative: 0.01% Thimerosal (merthiolate) Constituents: 1.21% Tris, 0.75% Glycine, 20% Glycerol
Purity	Immunogen affinity purified
Clonality	Polyclonal
Isotype	IgG

Applications

Our [Abpromise guarantee](#) covers the use of **ab227003** in the following tested applications.

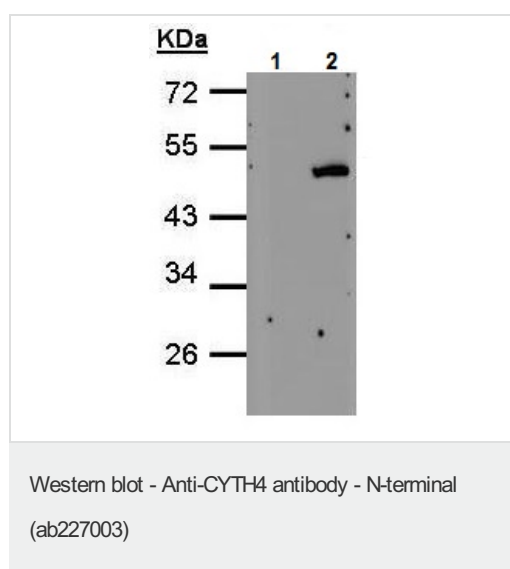
The application notes include recommended starting dilutions; optimal dilutions/concentrations should be determined by the end user.

Application	Abreviews	Notes
WB		1/500 - 1/3000. Predicted molecular weight: 46 kDa.

Target

Function	Promotes guanine-nucleotide exchange on ARF1 and ARF5. Promotes the activation of ARF through replacement of GDP with GTP.
Tissue specificity	Expressed predominantly in peripheral blood leukocytes.
Sequence similarities	Contains 1 PH domain. Contains 1 SEC7 domain.
Cellular localization	Cell membrane.

Images



All lanes : Anti-CYTH4 antibody - N-terminal (ab227003) at 1/500 dilution

Lane 1 : Non-transfected HEK-293T (human epithelial cell line from embryonic kidney transformed with large T antigen) cell lysate

Lane 2 : CYTH4 transfected HEK-293T (human epithelial cell line from embryonic kidney transformed with large T antigen) cell lysate

Predicted band size: 46 kDa

12% SDS PAGE gel.

Please note: All products are "FOR RESEARCH USE ONLY. NOT FOR USE IN DIAGNOSTIC PROCEDURES"

Our Abpromise to you: Quality guaranteed and expert technical support

- Replacement or refund for products not performing as stated on the datasheet
- Valid for 12 months from date of delivery
- Response to your inquiry within 24 hours
- We provide support in Chinese, English, French, German, Japanese and Spanish
- Extensive multi-media technical resources to help you
- We investigate all quality concerns to ensure our products perform to the highest standards

If the product does not perform as described on this datasheet, we will offer a refund or replacement. For full details of the Abpromise, please visit <https://www.abcam.com/abpromise> or contact our technical team.

Terms and conditions

- Guarantee only valid for products bought direct from Abcam or one of our authorized distributors