

Product datasheet

Anti-Cytochrome b-c1 complex subunit 9/UQCR10 antibody [EPR8179] ab134909

Recombinant RabMAb

[1 References](#) [4 Images](#)

Overview

Product name	Anti-Cytochrome b-c1 complex subunit 9/UQCR10 antibody [EPR8179]
Description	Rabbit monoclonal [EPR8179] to Cytochrome b-c1 complex subunit 9/UQCR10
Host species	Rabbit
Tested applications	Suitable for: WB, ICC/IF Unsuitable for: Flow Cyt, IHC-P or IP
Species reactivity	Reacts with: Human
Immunogen	Synthetic peptide within Human Cytochrome b-c1 complex subunit 9/UQCR10 aa 50-150. The exact sequence is proprietary.
Positive control	MCF7, HepG2, HeLa, Human fetal heart, and Human skeletal muscle lysates; HeLa cells.
General notes	Mouse, Rat: We have preliminary internal testing data to indicate this antibody may not react with these species. Please contact us for more information.

This product was previously labelled as Cytochrome b-c1 complex subunit 9

This product is a recombinant monoclonal antibody, which offers several advantages including:

- High batch-to-batch consistency and reproducibility
- Improved sensitivity and specificity
- Long-term security of supply
- Animal-free production

For more information [see here](#).

Our RabMAb[®] technology is a patented hybridoma-based technology for making rabbit monoclonal antibodies. For details on our patents, please refer to [RabMAb[®] patents](#).

Reproducibility is key to advancing scientific discovery and accelerating scientists' next breakthrough.

Abcam is leading the way with our range of recombinant antibodies, knockout-validated antibodies and knockout cell lines, all of which support improved reproducibility.

We are also planning to innovate the way in which we present recommended applications and species on our product datasheets, so that only applications & species that have been tested in

our own labs, our suppliers or by selected trusted collaborators are covered by our Abpromise™ guarantee.

In preparation for this, we have started to update the applications & species that this product is Abpromise guaranteed for.

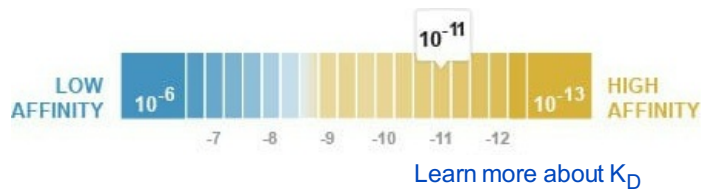
We are also updating the applications & species that this product has been “predicted to work with,” however this information is not covered by our Abpromise guarantee.

Applications & species from publications and Abreviews that have not been tested in our own labs or in those of our suppliers are not covered by the Abpromise guarantee.

Please check that this product meets your needs before purchasing. If you have any questions, special requirements or concerns, please send us an inquiry and/or contact our Support team ahead of purchase. Recommended alternatives for this product can be found below, as well as customer reviews and Q&As.

Properties

Form	Liquid
Storage instructions	Shipped at 4°C. Store at -20°C.
Dissociation constant (K_D)	K _D = 3.40 x 10 ⁻¹¹ M



Storage buffer	pH: 7.2 Preservative: 0.01% Sodium azide Constituents: 9% PBS, 40% Glycerol (glycerin, glycerine), 0.05% BSA, 50% Tissue culture supernatant
Purity	Tissue culture supernatant
Clonality	Monoclonal
Clone number	EPR8179
Isotype	IgG

Applications

Our [Abpromise guarantee](#) covers the use of **ab134909** in the following tested applications.

The application notes include recommended starting dilutions; optimal dilutions/concentrations should be determined by the end user.

Application	Abreviews	Notes
WB		1/10000 - 1/50000. Predicted molecular weight: 7 kDa.
ICC/IF		1/250 - 1/500.

Application notes	Is unsuitable for Flow Cyt, IHC-P or IP.
--------------------------	--

Target

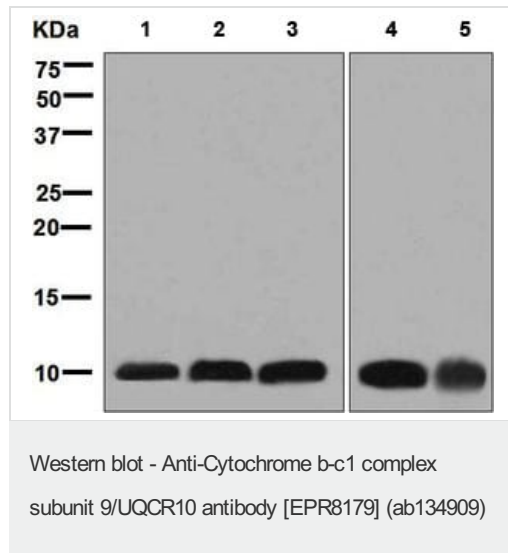
Relevance

Function: This is a component of the ubiquinol-cytochrome c reductase complex (complex III or cytochrome b-c1 complex), which is part of the mitochondrial respiratory chain. This subunit interacts with cytochrome c1. Similarity: Belongs to the UQCR10/QCR9 family.

Cellular localization

Mitochondrial; Mitochondrion inner membrane

Images



All lanes : Anti-Cytochrome b-c1 complex subunit 9/UQCR10 antibody [EPR8179] (ab134909) at 1/10000 dilution

Lane 1 : MCF7 cell lysate

Lane 2 : HepG2 cell lysate

Lane 3 : HeLa cell lysate

Lane 4 : Human fetal heart lysate

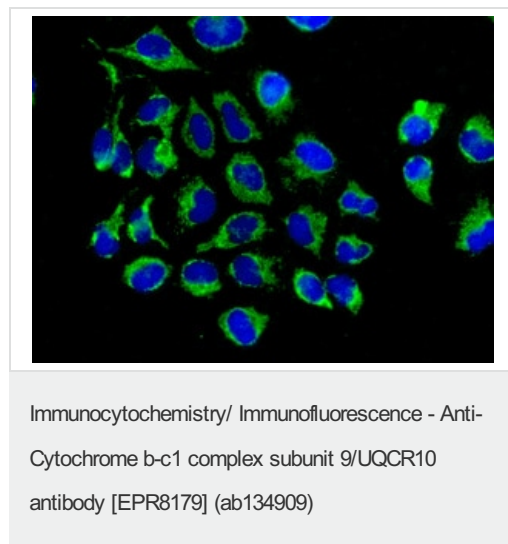
Lane 5 : Human skeletal muscle lysate

Lysates/proteins at 10 µg per lane.

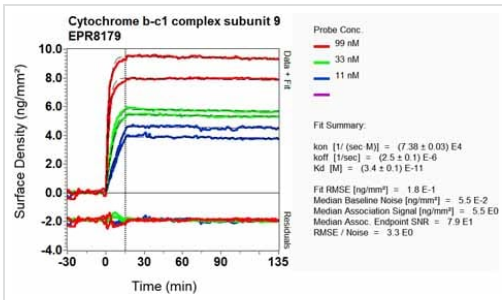
Secondary

All lanes : HRP-conjugated goat anti-rabbit IgG polyclonal at 1/2000 dilution

Predicted band size: 7 kDa



Immunofluorescent analysis of HeLa cells labelling Cytochrome b-c1 complex subunit 9/UQCR10 with ab134909 at 1/250 dilution.



OI-RD Scanning - Anti-Cytochrome b-c1 complex subunit 9/UQCR10 antibody [EPR8179] (ab134909)

Equilibrium dissociation constant (K_D)

Learn more about K_D

[Click here to learn more about \$K_D\$](#)

Why choose a recombinant antibody?

Research with confidence
Consistent and reproducible results

Long-term and scalable supply
Recombinant technology

Success from the first experiment
Confirmed specificity

Ethical standards compliant
Animal-free production

Anti-Cytochrome b-c1 complex subunit 9/UQCR10 antibody [EPR8179] (ab134909)

Please note: All products are "FOR RESEARCH USE ONLY. NOT FOR USE IN DIAGNOSTIC PROCEDURES"

Our Abpromise to you: Quality guaranteed and expert technical support

- Replacement or refund for products not performing as stated on the datasheet
- Valid for 12 months from date of delivery
- Response to your inquiry within 24 hours
- We provide support in Chinese, English, French, German, Japanese and Spanish
- Extensive multi-media technical resources to help you
- We investigate all quality concerns to ensure our products perform to the highest standards

If the product does not perform as described on this datasheet, we will offer a refund or replacement. For full details of the Abpromise, please visit <https://www.abcam.com/abpromise> or contact our technical team.

Terms and conditions

- Guarantee only valid for products bought direct from Abcam or one of our authorized distributors