


Product datasheet

Anti-Cytokeratin 19 antibody [EP1580Y] (Allophycocyanin) ab224980

Recombinant RabMAb

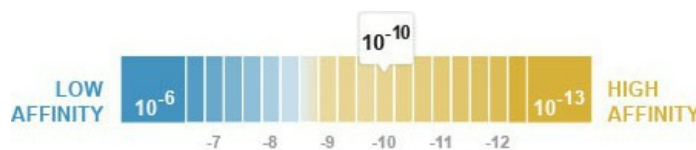
1 Image

Overview

Product name	Anti-Cytokeratin 19 antibody [EP1580Y] (Allophycocyanin)
Description	Rabbit monoclonal [EP1580Y] to Cytokeratin 19 (Allophycocyanin)
Host species	Rabbit
Conjugation	Allophycocyanin. Ex: 645nm, Em: 660nm
Tested applications	Suitable for: Flow Cyt
Species reactivity	Reacts with: Human Predicted to work with: Mouse 
Immunogen	Synthetic peptide within Human Cytokeratin 19 (C terminal). The exact sequence is proprietary. Database link: P08727
Positive control	Flow Cyt: HeLa cells
General notes	Our RabMAb [®] technology is a patented hybridoma-based technology for making rabbit monoclonal antibodies. For details on our patents, please refer to RabMAb[®] patents This product is a recombinant rabbit monoclonal antibody.

Properties

Form	Liquid
Storage instructions	Shipped at 4°C. Store at 4°C (stable for up to 12 months). Upon delivery aliquot. Store at +4°C. Do Not Freeze. Store In the Dark.
Dissociation constant (K_D)	K _D = 3.70 x 10 ⁻¹⁰ M



[Learn more about K_D](#)

Storage buffer	pH: 7.40 Preservative: 0.02% Sodium azide Constituents: 1% BSA, PBS
-----------------------	---

Purity	Protein A purified
Clonality	Monoclonal
Clone number	EP1580Y
Isotype	IgG

Applications

Our [Abpromise guarantee](#) covers the use of **ab224980** in the following tested applications.

The application notes include recommended starting dilutions; optimal dilutions/concentrations should be determined by the end user.

Application	Abreviews	Notes
Flow Cyt		1/5000. The cellular localisation of this product has been verified in ICC/IF.

Target

Function Involved in the organization of myofibers. Together with KRT8, helps to link the contractile apparatus to dystrophin at the costameres of striated muscle.

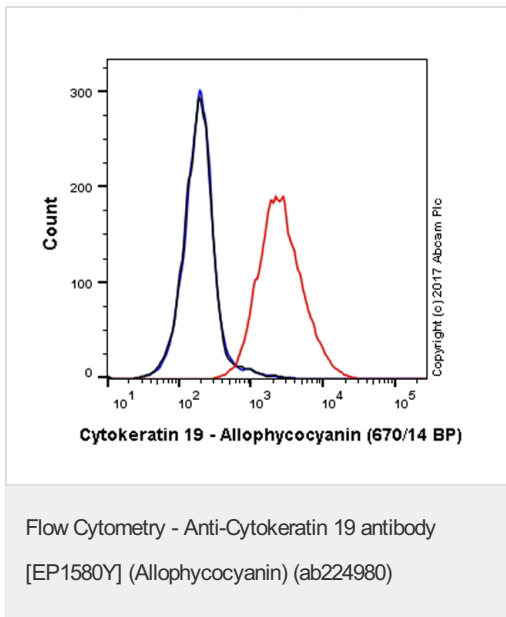
Tissue specificity Expressed in a defined zone of basal keratinocytes in the deep outer root sheath of hair follicles. Also observed in sweat gland and mammary gland ductal and secretory cells, bile ducts, gastrointestinal tract, bladder urothelium, oral epithelia, esophagus, ectocervical epithelium (at protein level). Expressed in epidermal basal cells, in nipple epidermis and a defined region of the hair follicle. Also seen in a subset of vascular wall cells in both the veins and artery of human umbilical cord, and in umbilical cord vascular smooth muscle. Observed in muscle fibers accumulating in the costameres of myoplasm at the sarcolemma in structures that contain dystrophin and spectrin.

Sequence similarities Belongs to the intermediate filament family.

Developmental stage Present in hair follicles at all stages of development.

Domain This keratin differs from all other IF proteins in lacking the C-terminal tail domain.

Images



Overlay histogram showing HeLa cells stained with ab224980 (red line). The cells were fixed with 80% methanol (5 min) and then permeabilized with 0.1% PBS-Triton X-100 for 15 min. The cells were then incubated in 1x PBS / 10% normal goat serum to block non-specific protein-protein interactions followed by the antibody (ab224980, 1/5000 dilution) for 30 min at 22°C.

Isotype control antibody (black line) was Rabbit IgG (monoclonal) Allophycocyanin used at the same concentration and conditions as the primary antibody. Unlabelled sample (blue line) was also used as a control.

Acquisition of >5,000 events were collected using a 40 mW Red laser (640nm) and 670/14 bandpass filter.

Please note: All products are "FOR RESEARCH USE ONLY. NOT FOR USE IN DIAGNOSTIC PROCEDURES"

Our Abpromise to you: Quality guaranteed and expert technical support

- Replacement or refund for products not performing as stated on the datasheet
- Valid for 12 months from date of delivery
- Response to your inquiry within 24 hours
- We provide support in Chinese, English, French, German, Japanese and Spanish
- Extensive multi-media technical resources to help you
- We investigate all quality concerns to ensure our products perform to the highest standards

If the product does not perform as described on this datasheet, we will offer a refund or replacement. For full details of the Abpromise, please visit <https://www.abcam.com/abpromise> or contact our technical team.

Terms and conditions

- Guarantee only valid for products bought direct from Abcam or one of our authorized distributors