




Product datasheet

Anti-Cytokeratin 7 antibody [KRT7/903] ab233905

1 Image

Overview

Product name	Anti-Cytokeratin 7 antibody [KRT7/903]
Description	Mouse monoclonal [KRT7/903] to Cytokeratin 7
Host species	Mouse
Tested applications	Suitable for: IHC-P
Species reactivity	Reacts with: Human Predicted to work with: Chimpanzee  Does not react with: Mouse, Rat, Rabbit, Ferret
Immunogen	Recombinant full length protein corresponding to Human Cytokeratin 7 aa 2-469. Sequence: SIHFSSPVFTSRSAAFSGRGAQVRLSSARPGGLGSSS LYGLGASRPRVAV RSAYGGPVGAGIREVTINQSLLAPLRLDADPSLQVRVQ EESEQIKTLNKK FASFIDKVRFLEQQNKLLETKWLLQEQLSAKSSRLP DIFEAQIAGLRGQ LEALQVDGGRLEAELRSMQDVVEDFKNKYEDEINHRT AAENEFVVLKKDV DAAYMSKVELEAKVDALNDEINFLRTLNETELTELQSQI SDTSVVLSMDN SRSLDLGIIAEVKAQYEEMAKCSRAEAEAWYQTKFE TLQAQAGKHGDDL RNTRNEISEMNRAIQRLQAEIDNIKNQRAKLEAAIAEAE RGELALKDAR AKQEELEAALQRGKQDMARQLREYQELMSVKLALDIEI ATYRKLLGEES RLAGDGVGAVNISVMNSTGGSSSGGGIGLTLGGTMGS NALSFSSSAGPGL LKAYSIRTASASRRSARD Database link: P08729  Run BLAST with  Run BLAST with
Positive control	IHC-P: Human ovarian carcinoma tissue.

Properties

Form	Liquid
Storage instructions	Shipped at 4°C. Store at +4°C short term (1-2 weeks). Upon delivery aliquot. Store at -20°C long term. Avoid freeze / thaw cycle.
Storage buffer	Preservative: 0.05% Sodium azide Constituents: PBS, 0.05% BSA
Purity	Protein A/G purified
Purification notes	Purified from Bioreactor Concentrate by Protein A/G.
Clonality	Monoclonal
Clone number	KRT7/903
Isotype	IgG1

Applications

Our [Abpromise guarantee](#) covers the use of **ab233905** in the following tested applications.

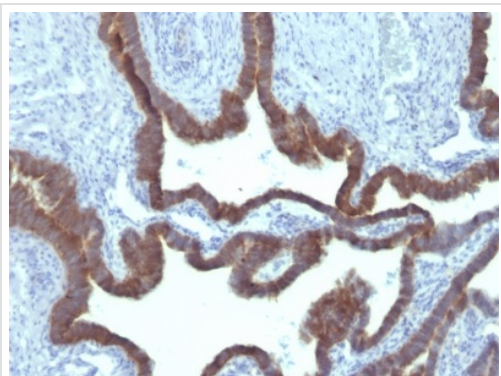
The application notes include recommended starting dilutions; optimal dilutions/concentrations should be determined by the end user.

Application	Abreviews	Notes
IHC-P		Use a concentration of 1 - 2 µg/ml. Perform heat mediated antigen retrieval with Tris/EDTA buffer pH 9.0 before commencing with IHC staining protocol. (Primary incubation for 30 minutes at RT).

Target

Function	Blocks interferon-dependent interphase and stimulates DNA synthesis in cells. Involved in the translational regulation of the human papillomavirus type 16 E7 mRNA (HPV16 E7).
Tissue specificity	Expressed in cultured epidermal, bronchial and mesothelial cells but absent in colon, ectocervix and liver. Observed throughout the glandular cells in the junction between stomach and esophagus but is absent in the esophagus.
Sequence similarities	Belongs to the intermediate filament family.
Post-translational modifications	Arg-20 is dimethylated, probably to asymmetric dimethylarginine.
Cellular localization	Cytoplasm.

Images



Formalin-fixed, paraffin-embedded human ovarian carcinoma tissue stained for Cytokeratin 7 using ab233905 at 2 µg/ml in immunohistochemical analysis.

Immunohistochemistry (Formalin/PFA-fixed paraffin-embedded sections) - Anti-Cytokeratin 7 antibody [KRT7/903] (ab233905)

Please note: All products are "FOR RESEARCH USE ONLY. NOT FOR USE IN DIAGNOSTIC PROCEDURES"

Our Abpromise to you: Quality guaranteed and expert technical support

- Replacement or refund for products not performing as stated on the datasheet
- Valid for 12 months from date of delivery
- Response to your inquiry within 24 hours
- We provide support in Chinese, English, French, German, Japanese and Spanish
- Extensive multi-media technical resources to help you
- We investigate all quality concerns to ensure our products perform to the highest standards

If the product does not perform as described on this datasheet, we will offer a refund or replacement. For full details of the Abpromise, please visit <https://www.abcam.com/abpromise> or contact our technical team.

Terms and conditions

- Guarantee only valid for products bought direct from Abcam or one of our authorized distributors