

Product datasheet

Anti-Cytokeratin 7 antibody [SPM270] - BSA and Azide free ab212526

1 Image

Overview

Product name	Anti-Cytokeratin 7 antibody [SPM270] - BSA and Azide free
Description	Mouse monoclonal [SPM270] to Cytokeratin 7 - BSA and Azide free
Host species	Mouse
Tested applications	Suitable for: Flow Cyt, IHC-P, ICC/IF
Species reactivity	Reacts with: Human
Immunogen	Tissue, cells or virus corresponding to Human Cytokeratin 7. From OTN 11, ovarian carcinoma cell line. Database link: P08729
Positive control	Lung, squamous cell carcinoma tissue; HeLa cells; Carcinoma of ovary, cervix, or breast

Properties

Storage instructions	Shipped at 4°C. Store at +4°C short term (1-2 weeks). Upon delivery aliquot. Store at -20°C long term. Avoid freeze / thaw cycle.
Storage buffer	Constituent: 100% PBS
Carrier free	Yes
Purity	Protein G purified
Purification notes	Purified from bioreactor concentrate.
Clonality	Monoclonal
Clone number	SPM270
Isotype	IgG1

Applications

Our [Abpromise guarantee](#) covers the use of **ab212526** in the following tested applications.

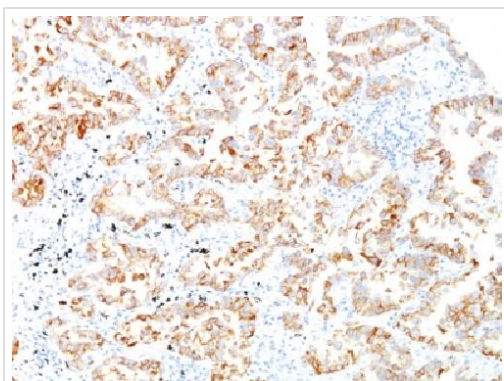
The application notes include recommended starting dilutions; optimal dilutions/concentrations should be determined by the end user.

Application	Abreviews	Notes
Flow Cyt		Use 0.5-1µg for 10 ⁶ cells. Final volume 100 µL.
IHC-P		Use a concentration of 0.5 - 1 µg/ml. Perform heat mediated antigen retrieval with citrate buffer pH 6 before commencing with IHC staining protocol.
ICC/IF		Use a concentration of 0.5 - 1 µg/ml.

Target

Function	Blocks interferon-dependent interphase and stimulates DNA synthesis in cells. Involved in the translational regulation of the human papillomavirus type 16 E7 mRNA (HPV16 E7).
Tissue specificity	Expressed in cultured epidermal, bronchial and mesothelial cells but absent in colon, ectocervix and liver. Observed throughout the glandular cells in the junction between stomach and esophagus but is absent in the esophagus.
Sequence similarities	Belongs to the intermediate filament family.
Post-translational modifications	Arg-20 is dimethylated, probably to asymmetric dimethylarginine.
Cellular localization	Cytoplasm.

Images



Immunohistochemical analysis of paraffin embedded human Lung, squamous cell carcinoma tissue labeling Cytokeratin 7 with ab212526 at 0.5 µg/mL.

Immunohistochemistry (Formalin/PFA-fixed paraffin-embedded sections) - Anti-Cytokeratin 7 antibody [SPM270] - BSA and Azide free (ab212526)

Please note: All products are "FOR RESEARCH USE ONLY. NOT FOR USE IN DIAGNOSTIC PROCEDURES"

Our Abpromise to you: Quality guaranteed and expert technical support

- Replacement or refund for products not performing as stated on the datasheet

- Valid for 12 months from date of delivery
- Response to your inquiry within 24 hours

- We provide support in Chinese, English, French, German, Japanese and Spanish
- Extensive multi-media technical resources to help you
- We investigate all quality concerns to ensure our products perform to the highest standards

If the product does not perform as described on this datasheet, we will offer a refund or replacement. For full details of the Abpromise, please visit <https://www.abcam.com/abpromise> or contact our technical team.

Terms and conditions

- Guarantee only valid for products bought direct from Abcam or one of our authorized distributors