

Product datasheet

Anti-Cytokeratin 8 antibody [B22.1] ab233906

1 Image

Overview

Product name	Anti-Cytokeratin 8 antibody [B22.1]
Description	Mouse monoclonal [B22.1] to Cytokeratin 8
Host species	Mouse
Tested applications	Suitable for: IHC-P
Species reactivity	Reacts with: Human Predicted to work with: Sheep, Rabbit, Cow, Pig ⚠ Does not react with: Mouse, Rat, Chicken, Xenopus laevis
Immunogen	Tissue, cells or virus corresponding to Human Cytokeratin 8. (Cytoskeletal preparation from HeLa cells).
Positive control	IHC-P: Human colon carcinoma tissue.
General notes	<p>Reproducibility is key to advancing scientific discovery and accelerating scientists' next breakthrough.</p> <p>Abcam is leading the way with our range of recombinant antibodies, knockout-validated antibodies and knockout cell lines, all of which support improved reproducibility.</p> <p>We are also planning to innovate the way in which we present recommended applications and species on our product datasheets, so that only applications & species that have been tested in our own labs, our suppliers or by selected trusted collaborators are covered by our Abpromise™ guarantee.</p> <p>In preparation for this, we have started to update the applications & species that this product is Abpromise guaranteed for.</p> <p>We are also updating the applications & species that this product has been “predicted to work with,” however this information is not covered by our Abpromise guarantee.</p> <p>Applications & species from publications and Abreviews that have not been tested in our own labs or in those of our suppliers are not covered by the Abpromise guarantee.</p> <p>Please check that this product meets your needs before purchasing. If you have any questions, special requirements or concerns, please send us an inquiry and/or contact our Support team ahead of purchase. Recommended alternatives for this product can be found below, as well as customer reviews and Q&As.</p>

Properties

Form	Liquid
Storage instructions	Shipped at 4°C. Store at +4°C short term (1-2 weeks). Upon delivery aliquot. Store at -20°C long term. Avoid freeze / thaw cycle.
Storage buffer	Preservative: 0.05% Sodium azide Constituents: PBS, 0.05% BSA
Purity	Protein A/G purified
Purification notes	Purified from Bioreactor Concentrate by Protein A/G.
Clonality	Monoclonal
Clone number	B22.1
Isotype	IgG1
Light chain type	kappa

Applications

Our [Abpromise guarantee](#) covers the use of **ab233906** in the following tested applications.

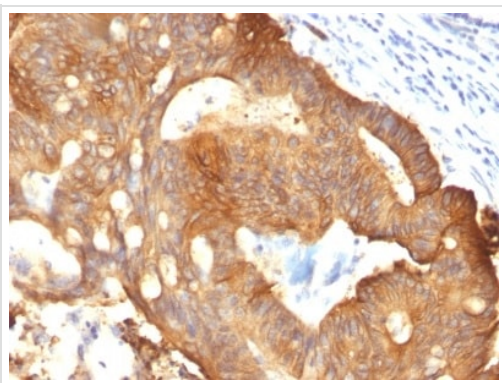
The application notes include recommended starting dilutions; optimal dilutions/concentrations should be determined by the end user.

Application	Abreviews	Notes
IHC-P		Use a concentration of 0.5 - 1 µg/ml. Perform heat mediated antigen retrieval with citrate buffer pH 6 before commencing with IHC staining protocol. (Primary incubation for 30 minutes at RT).

Target

Function	Together with KRT19, helps to link the contractile apparatus to dystrophin at the costameres of striated muscle.
Tissue specificity	Observed in muscle fibers accumulating in the costameres of myoplasm at the sarcolemma membrane in structures that contain dystrophin and spectrin. Expressed in gingival mucosa and hard palate of the oral cavity.
Involvement in disease	Cirrhosis
Sequence similarities	Belongs to the intermediate filament family.
Post-translational modifications	Phosphorylation on serine residues is enhanced during EGF stimulation and mitosis. Ser-74 phosphorylation plays an important role in keratin filament reorganization. O-glycosylated. O-GlcNAcylation at multiple sites increases solubility, and decreases stability by inducing proteasomal degradation. O-glycosylated (O-GlcNAcyated), in a cell cycle-dependent manner.
Cellular localization	Cytoplasm. Nucleus, nucleoplasm. Nucleus matrix.

Images



Formalin-fixed, paraffin-embedded human colon carcinoma tissue stained for Cytokeratin 8 using ab233906 at 1 µg/ml in immunohistochemical analysis.

Immunohistochemistry (Formalin/PFA-fixed paraffin-embedded sections) - Anti-Cytokeratin 8 antibody [B22.1] (ab233906)

Please note: All products are "FOR RESEARCH USE ONLY. NOT FOR USE IN DIAGNOSTIC PROCEDURES"

Our Abpromise to you: Quality guaranteed and expert technical support

- Replacement or refund for products not performing as stated on the datasheet
- Valid for 12 months from date of delivery
- Response to your inquiry within 24 hours
- We provide support in Chinese, English, French, German, Japanese and Spanish
- Extensive multi-media technical resources to help you
- We investigate all quality concerns to ensure our products perform to the highest standards

If the product does not perform as described on this datasheet, we will offer a refund or replacement. For full details of the Abpromise, please visit <https://www.abcam.com/abpromise> or contact our technical team.

Terms and conditions

- Guarantee only valid for products bought direct from Abcam or one of our authorized distributors