

Product datasheet

Cytokine Array – Human Cytokine Antibody Array (Membrane, 80 Targets) ab133998

25 References 2 Images

Overview

<b>Product name</b>	Cytokine Array – Human Cytokine Antibody Array (Membrane, 80 Targets)
<b>Sample type</b>	Cell culture supernatant, Saliva, Milk, Urine, Serum, Plasma, Cell culture extracts, Other biological fluids, Whole Blood, Tissue Extracts, Cell Lysate, Cell culture media
<b>Assay type</b>	Semi-quantitative
<b>Species reactivity</b>	<b>Reacts with:</b> Human
<b>Product overview</b>	ab133998 is for simultaneous detection of 80 Human Cytokines. Suitable for all sample types.

**Targets:** ENA-78, GCSF, GM-CSF, GRO, GRO-alpha, I-309, IL-1alpha, IL-1beta, IL-2, IL-3, IL-4, IL-5, IL-6, IL-7, IL-8, IL-10, IL-12 p40/p70, IL-13, IL-15, IFN-gamma, MCP-1, MCP-2, MCP-3, MCSF, MDC, MIG, MIP-1beta, MIP-1delta, RANTES, SCF, SDF-1, TARC, TGF-beta1, TNF-alpha, TNF-beta, EGF, IGF-I, Angiogenin, Oncostatin M, Thrombopoietin, VEGF-A, PDGF-BB, Leptin, BDNF, BLC, Ck38-1, Eotaxin, Eotaxin-2, Eotaxin-3, FGF-4, FGF-6, FGF-7, FGF-9, Flt-3 Ligand, Fractalkine, GCP-2, GDNF, HGF, IGFBP-1, IGFBP-2, IGFBP-3, IGFBP-4, IL-16, IP-10, LIF, LIGHT, MCP-4, MIF, MIP-3 alpha, NAP-2, NT-3, NT-4, Osteopontin, Osteoprotegerin, PARC, PLGF, TGF-beta2, TGF-beta3, TIMP-1, TIMP-2

Cytokine arrays are an antibody-pair-based assay, analogous to ELISA, but using a membrane as a substrate rather than a plate. Capture antibodies are supplied arrayed/spotted on a membrane with each pair of spots representing a different analyte. Sample is added (1mL/sample to each membrane), and then paired biotinylated detector antibodies and streptavidin HRP. The cytokine array is analyzed using the same methods as a chemiluminescent western blot. Comparison between samples can be by eye or using densitometry software for a semi-quantitative comparison.

**Learn more about membrane antibody arrays**

**Notes** If you are interested in this cytokine array, [cytokine array ab133997](#), [ab169817](#), [ab133996](#), [ab169811](#), [ab169817](#), [ab169812](#), [ab134000](#), [ab169803](#), [ab134002](#), [ab169804](#), [ab169805](#), [ab134003](#) and [ab169819](#) may also be of interest.

**A table listing all of our human membrane antibody cytokine arrays and other arrays and the analytes they measure is available [here](#).**

Abcam has not and does not intend to apply for the REACH Authorisation of customers' uses of products that contain European Authorisation list (Annex XIV) substances.

It is the responsibility of our customers to check the necessity of application of REACH Authorisation, and any other relevant authorisations, for their intended uses.

## Tested applications

**Suitable for:** Multiplex Protein Detection

## Properties

### Storage instructions

Store at -20°C. Please refer to protocols.

Components	1 x 4 Membranes	1 x 8 Membranes	1 x 2 Membranes
1,000X HRP-Conjugated Streptavidin	1 x 50µl	1 x 50µl	1 x 50µl
1X Blocking Buffer	1 x 25ml	2 x 25ml	1 x 25ml
20X Wash Buffer I	1 x 10ml	1 x 20ml	1 x 10ml
20X Wash Buffer II	1 x 10ml	1 x 20ml	1 x 10ml
2X Cell Lysis Buffer	1 x 10ml	1 x 16ml	1 x 10ml
8-Well Incubation Tray (with Lid)	1 unit	1 unit	1 unit
Biotin-Conjugated Anti-Cytokines	2 vials	4 vials	1 vial
Cytokine Antibody Array Membranes	4 units	8 units	2 units
Detection Buffer C	1 x 1.5ml	1 x 2.5ml	1 x 1.5ml
Detection Buffer D	1 x 1.5ml	1 x 2.5ml	1 x 1.5ml

## Applications

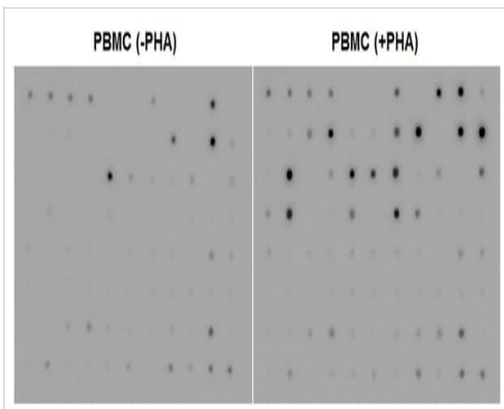
### The Abpromise guarantee

Our [Abpromise guarantee](#) covers the use of ab133998 in the following tested applications.

The application notes include recommended starting dilutions; optimal dilutions/concentrations should be determined by the end user.

Application	Abreviews	Notes
<b>Multiplex Protein Detection</b>		Use at an assay dependent concentration.

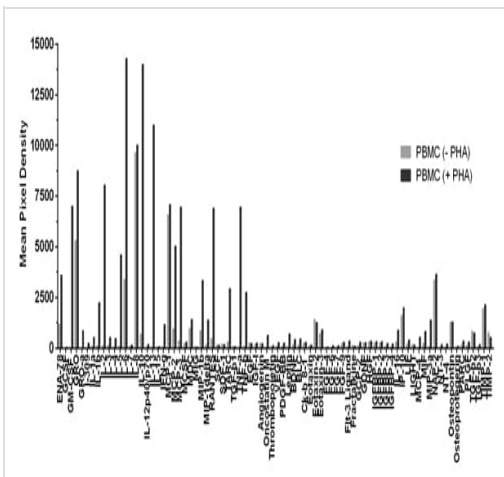
## Images



Multiplex Protein Detection - Human Cytokine  
Antibody Array - Membrane (80 Targets) (ab133998)

Human peripheral blood cells ( $1 \times 10^6$  cells/mL) were cultured in RPMI media supplemented with 10% fetal calf serum, 100 U/mL penicillin, and 100 mg/mL streptomycin sulfate.

Cells were cultured unstimulated or stimulated with 10  $\mu$ g/mL PHA. Conditioned media was harvested after 48 hours, aliquoted and assayed using ab133998.



Quantification of Human Cytokine Antibody Array

Cells were cultured unstimulated or stimulated with 10 mg/mL PHA. Conditioned media was harvested after 48 hours, aliquoted and assayed using ab133998. Mean pixel density was quantified using CCD camera software analysis.

**Please note:** All products are "FOR RESEARCH USE ONLY. NOT FOR USE IN DIAGNOSTIC PROCEDURES"

### Our Abpromise to you: Quality guaranteed and expert technical support

- Replacement or refund for products not performing as stated on the datasheet
- Valid for 12 months from date of delivery
- Response to your inquiry within 24 hours
- We provide support in Chinese, English, French, German, Japanese and Spanish
- Extensive multi-media technical resources to help you
- We investigate all quality concerns to ensure our products perform to the highest standards

If the product does not perform as described on this datasheet, we will offer a refund or replacement. For full details of the Abpromise, please visit <https://www.abcam.com/abpromise> or contact our technical team.

## Terms and conditions

---

- Guarantee only valid for products bought direct from Abcam or one of our authorized distributors