

## Product datasheet

# Anti-Cytomegalovirus pp28 antibody [5C3] ab6502

10 References 2 Images

### Overview

---

<b>Product name</b>	Anti-Cytomegalovirus pp28 antibody [5C3]
<b>Description</b>	Mouse monoclonal [5C3] to Cytomegalovirus pp28
<b>Host species</b>	Mouse
<b>Specificity</b>	Cytomegalovirus pp28 tegument protein. Slight cross reactivity with HSV1.
<b>Tested applications</b>	<b>Suitable for:</b> WB, ELISA
<b>Species reactivity</b>	<b>Reacts with:</b> Other species
<b>Immunogen</b>	Cytomegalovirus
<b>General notes</b>	<p>The Life Science industry has been in the grips of a reproducibility crisis for a number of years. Abcam is leading the way in addressing this with our range of recombinant monoclonal antibodies and knockout edited cell lines for gold-standard validation. Please check that this product meets your needs before purchasing.</p> <p>If you have any questions, special requirements or concerns, please send us an inquiry and/or contact our Support team ahead of purchase. Recommended alternatives for this product can be found below, along with publications, customer reviews and Q&amp;As</p>

### Properties

---

<b>Form</b>	Liquid
<b>Storage instructions</b>	Shipped at 4°C. Upon delivery aliquot and store at -20°C or -80°C. Avoid repeated freeze / thaw cycles.
<b>Storage buffer</b>	pH: 7.40 Constituent: PBS
<b>Purity</b>	Protein A purified
<b>Purification notes</b>	> 95% IgG by SDS-PAGE.
<b>Clonality</b>	Monoclonal
<b>Clone number</b>	5C3
<b>Myeloma</b>	NS1/1-Ag4-1
<b>Isotype</b>	IgG2a
<b>Light chain type</b>	kappa

## Applications

### The Abpromise guarantee

Our [Abpromise guarantee](#) covers the use of ab6502 in the following tested applications.

The application notes include recommended starting dilutions; optimal dilutions/concentrations should be determined by the end user.

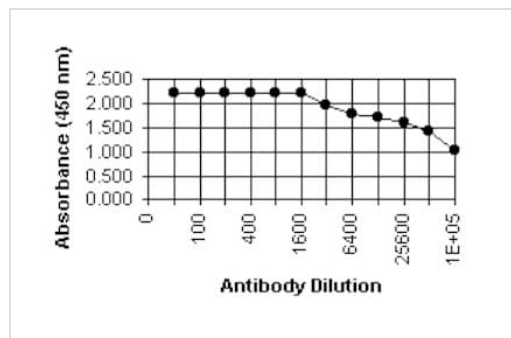
Application	Abreviews	Notes
WB		1/16000. Detects a band of approximately . kDa (predicted molecular weight: 28 kDa).
ELISA		1/100000.

## Target

### Relevance

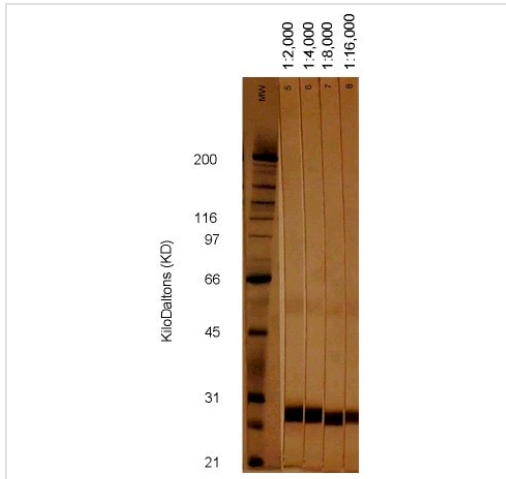
Cytomegalovirus (CMV), is a genus of Herpes viruses; in humans the species is known as Human herpesvirus 5 (HHV-5). It belongs to the Betaherpesvirinae subfamily of Herpesviridae. The name means "very big cell virus".

## Images



Please see protocols tab for procedure. Antigen is CMV infected cell extract coated at a dilution of 1/100.

ELISA - Anti-Cytomegalovirus pp28 antibody [5C3]  
(ab6502)



Western blot - Anti-Cytomegalovirus pp28 antibody [5C3] (ab6502)

See protocols tab for procedure. Antigen is CMV infected cell extract at 10 µg/cm.

**Please note:** All products are "FOR RESEARCH USE ONLY. NOT FOR USE IN DIAGNOSTIC PROCEDURES"

### Our Abpromise to you: Quality guaranteed and expert technical support

- Replacement or refund for products not performing as stated on the datasheet
- Valid for 12 months from date of delivery
- Response to your inquiry within 24 hours
- We provide support in Chinese, English, French, German, Japanese and Spanish
- Extensive multi-media technical resources to help you
- We investigate all quality concerns to ensure our products perform to the highest standards

If the product does not perform as described on this datasheet, we will offer a refund or replacement. For full details of the Abpromise, please visit <https://www.abcam.com/abpromise> or contact our technical team.

### Terms and conditions

- Guarantee only valid for products bought direct from Abcam or one of our authorized distributors