




Product datasheet

Anti-Dab1 antibody ab189426

3 Images

Overview

Product name	Anti-Dab1 antibody
Description	Rabbit polyclonal to Dab1
Host species	Rabbit
Tested applications	Suitable for: IHC-P, ICC/IF, WB
Species reactivity	Reacts with: Human Predicted to work with: Mouse, Rat 
Immunogen	Synthetic peptide within Human Dab1 aa 199-248. The exact sequence is proprietary. From Isoform DAB555. NP_066566.3 Sequence: QYVFEAGHEPIRDPETEENYQVPTSQKKEGVYDVPK SQPVSAVTQLEL Database link: O75553-6  Run BLAST with  Run BLAST with
Positive control	Human intestine tissue; MCF7 cells; extracts from HepG2 and 293 cells.

Properties

Form	Liquid
Storage instructions	Shipped at 4°C. Store at +4°C short term (1-2 weeks). Upon delivery aliquot. Store at -20°C long term. Avoid freeze / thaw cycle.
Storage buffer	pH: 7.40 Preservative: 0.02% Sodium azide Constituents: 50% Glycerol, 0.87% Sodium chloride, 49% PBS PBS is without Mg/sup> and Ca2+/sup>.
Purity	Immunogen affinity purified
Clonality	Polyclonal
Isotype	IgG

Applications

Applications

Our [Abpromise guarantee](#) covers the use of **ab189426** in the following tested applications.

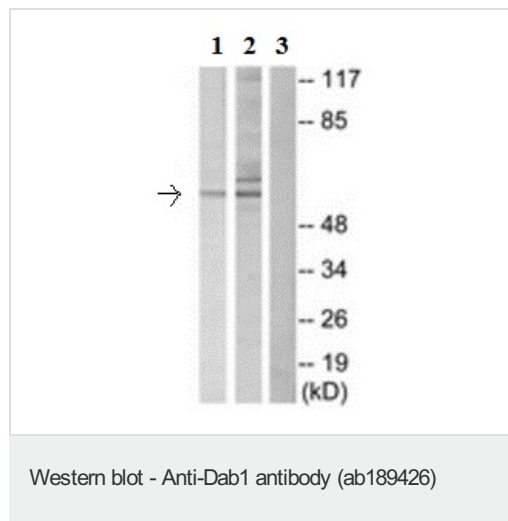
The application notes include recommended starting dilutions; optimal dilutions/concentrations should be determined by the end user.

Application	Abreviews	Notes
IHC-P		Use a concentration of 20 µg/ml.
ICC/IF		1/100 - 1/500.
WB		1/500 - 1/1000. Predicted molecular weight: 60 kDa.

Target

Function	Adapter molecule functioning in neural development. May regulate SIAH1 activity.
Sequence similarities	Contains 1 PID domain.
Domain	The PID domain specifically binds to the Asn-Pro-Xaa-Tyr(P) motif found in many tyrosine-phosphorylated proteins.
Post-translational modifications	Phosphorylated on Tyr-198 and Tyr-220 upon reelin induction in embryonic neurons (By similarity). Also phosphorylated on Ser-524 independently of reelin signaling.

Images



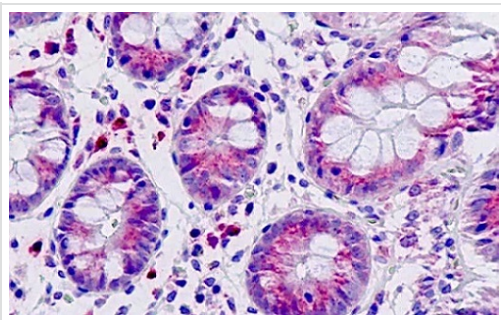
All lanes : Anti-Dab1 antibody (ab189426) at 1/500 dilution

Lane 1 : Extracts from HepG2 cells

Lane 2 : Extracts from 293 cells

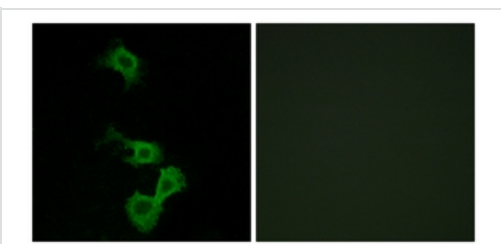
Lane 3 : Extracts from HepG2 cells treated with the synthesized peptide

Predicted band size: 60 kDa



Immunohistochemical analysis of formalin-fixed, paraffin-embedded Human intestine tissue labeling Dab1 with ab189426 at 20 µg/ml.

Immunohistochemistry (Formalin/PFA-fixed paraffin-embedded sections) - Anti-Dab1 antibody (ab189426)



Immunofluorescent analysis of MCF7 cells labeling Dab1 with ab189426 at 1/100 dilution. The image on the right is treated with the synthesized peptide.

Immunocytochemistry/ Immunofluorescence - Anti-Dab1 antibody (ab189426)

Please note: All products are "FOR RESEARCH USE ONLY. NOT FOR USE IN DIAGNOSTIC PROCEDURES"

Our Abpromise to you: Quality guaranteed and expert technical support

- Replacement or refund for products not performing as stated on the datasheet
- Valid for 12 months from date of delivery
- Response to your inquiry within 24 hours
- We provide support in Chinese, English, French, German, Japanese and Spanish
- Extensive multi-media technical resources to help you
- We investigate all quality concerns to ensure our products perform to the highest standards

If the product does not perform as described on this datasheet, we will offer a refund or replacement. For full details of the Abpromise, please visit <https://www.abcam.com/abpromise> or contact our technical team.

Terms and conditions

- Guarantee only valid for products bought direct from Abcam or one of our authorized distributors