


Product datasheet

Anti-DAP12 antibody ab155779

2 Images

Overview

<b>Product name</b>	Anti-DAP12 antibody
<b>Description</b>	Rabbit polyclonal to DAP12
<b>Host species</b>	Rabbit
<b>Tested applications</b>	<b>Suitable for:</b> WB, IHC-P
<b>Species reactivity</b>	<b>Reacts with:</b> Human <b>Predicted to work with:</b> Cow, Dog, Monkey 
<b>Immunogen</b>	Synthetic peptide, corresponding to a region within amino acids 50-113 of Human DAP12 (Uniprot ID O43914).
<b>Positive control</b>	DAP12 transfected 293T cells; H1299 xenograft tissue.

Properties

<b>Form</b>	Liquid
<b>Storage instructions</b>	Shipped at 4°C. Upon delivery aliquot. Store at -20°C or -80°C. Avoid freeze / thaw cycle.
<b>Storage buffer</b>	pH: 7.00 Preservative: 0.01% Thimerosal (merthiolate) Constituents: 1.21% Tris, 0.75% Glycine, 20% Glycerol
<b>Purity</b>	Immunogen affinity purified
<b>Clonality</b>	Polyclonal
<b>Isotype</b>	IgG

Applications

Our [Abpromise guarantee](#) covers the use of **ab155779** in the following tested applications.

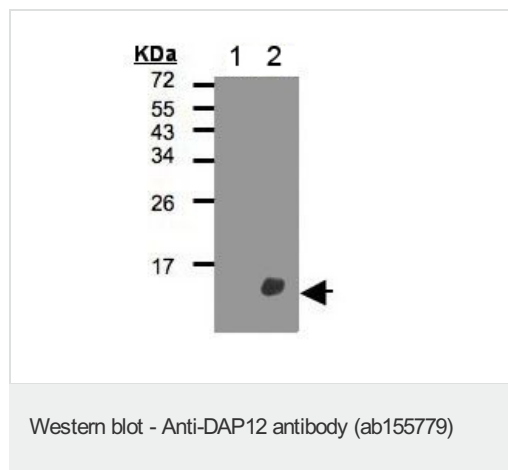
The application notes include recommended starting dilutions; optimal dilutions/concentrations should be determined by the end user.

Application	Abreviews	Notes
WB		1/500 - 1/3000. Predicted molecular weight: 12 kDa.
IHC-P		1/100 - 1/1000.

## Target

<b>Function</b>	Non-covalently associates with activating receptors of the CD300 family. Cross-linking of CD300-TYROBP complexes results in cellular activation.
<b>Tissue specificity</b>	Expressed at low levels in the early development of the hematopoietic system and in the promonocytic stage and at high levels in mature monocytes. Expressed in hematological cells and tissues such as peripheral blood leukocytes and spleen. Also found in bone marrow, lymph nodes, placenta, lung and liver. Expressed at lower levels in different parts of the brain especially in the basal ganglia and corpus callosum.
<b>Involvement in disease</b>	Defects in TYROBP are a cause of polycystic lipomembranous osteodysplasia with sclerosing leukoencephalopathy (PLOSL) [MIM:221770]; also called presenile dementia with bone cysts or Nasu-Hakola disease (NHD). PLOSL is a recessively inherited disease characterized by a combination of psychotic symptoms rapidly progressing to presenile dementia and bone cysts restricted to wrists and ankles. PLOSL has a global distribution, although most of the patients have been diagnosed in Finland and Japan, with an estimated population prevalence of $2 \times 10^{-6}$ in the Finns.
<b>Sequence similarities</b>	Belongs to the TYROBP family.
<b>Post-translational modifications</b>	Tyrosine phosphorylated.
<b>Cellular localization</b>	Membrane.

## Images



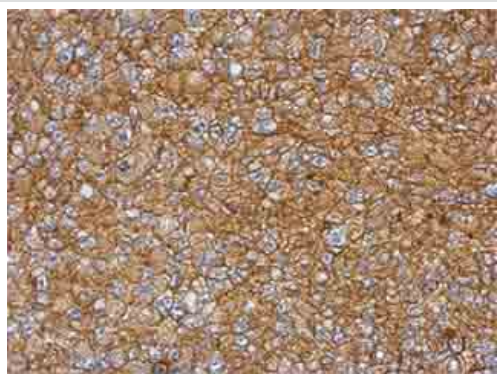
**All lanes :** Anti-DAP12 antibody (ab155779) at 1/500 dilution

**Lane 1 :** Non-transfected whole cell lysate

**Lane 2 :** DAP12 transfected whole cell lysate

**Predicted band size:** 12 kDa

15% SDS PAGE



Immunohistochemical analysis of paraffin-embedded H1299 xenograft, labeling DAP12 with ab155779 at 1/500 dilution.

Immunohistochemistry (Formalin/PFA-fixed paraffin-embedded sections) - Anti-DAP12 antibody (ab155779)

**Please note:** All products are "FOR RESEARCH USE ONLY. NOT FOR USE IN DIAGNOSTIC PROCEDURES"

### **Our Abpromise to you: Quality guaranteed and expert technical support**

---

- Replacement or refund for products not performing as stated on the datasheet
- Valid for 12 months from date of delivery
- Response to your inquiry within 24 hours
- We provide support in Chinese, English, French, German, Japanese and Spanish
- Extensive multi-media technical resources to help you
- We investigate all quality concerns to ensure our products perform to the highest standards

If the product does not perform as described on this datasheet, we will offer a refund or replacement. For full details of the Abpromise, please visit <https://www.abcam.com/abpromise> or contact our technical team.

### **Terms and conditions**

---

- Guarantee only valid for products bought direct from Abcam or one of our authorized distributors