



## Product datasheet

# Anti-DBF4B/DRF1 antibody ab235528

2 Images

### Overview

<b>Product name</b>	Anti-DBF4B/DRF1 antibody
<b>Description</b>	Rabbit polyclonal to DBF4B/DRF1
<b>Host species</b>	Rabbit
<b>Tested applications</b>	<b>Suitable for:</b> IHC-P, WB
<b>Species reactivity</b>	<b>Reacts with:</b> Human
<b>Immunogen</b>	<p>Recombinant fragment corresponding to Human DBF4B/DRF1 aa 1-300. Sequence:</p> <pre>MSEPGKGDDCLELESSMAESRLRAPDLGVSRC LGKCQK NSPGARKHPFSG KSFYLDLPAGKNLQFLTGAIQQLGGVIEGFLSKEVSYVSS RREVKAESS GKSHRGCPSPSPSEVRVETSAMVDPKGSHPRPSRKPVD SVPLSRGKELLQ KAIRNQGSISGGGSGGSSLLTNARSWGVRILHVDMMMM HVQQLSLASLC VKKQQPKKPEGTCPAAESRTRKVARLKAPFLKIEDES RK FRPFHHQFKSF PEISFLGPKDASPFEAPTTLGSMHHTRESKDGEPSRSA AHTMPRRKKG Y</pre> <p>Database link: <a href="#">Q8NFT6</a></p> <p style="text-align: right;">  <a href="#">Run BLAST with</a>  <a href="#">Run BLAST with</a> </p>
<b>Positive control</b>	WB: MCF7 and A549 whole cell lysate. IHC-P: Human testis tissue.
<b>General notes</b>	This product was previously labelled as DBF4B

Reproducibility is key to advancing scientific discovery and accelerating scientists' next breakthrough.

Abcam is leading the way with our range of recombinant antibodies, knockout-validated antibodies and knockout cell lines, all of which support improved reproducibility.

We are also planning to innovate the way in which we present recommended applications and species on our product datasheets, so that only applications & species that have been tested in our own labs, our suppliers or by selected trusted collaborators are covered by our Abpromise™ guarantee.

In preparation for this, we have started to update the applications & species that this product is Abpromise guaranteed for.

We are also updating the applications & species that this product has been “predicted to work with,” however this information is not covered by our Abpromise guarantee.

Applications & species from publications and Abreviews that have not been tested in our own labs or in those of our suppliers are not covered by the Abpromise guarantee.

Please check that this product meets your needs before purchasing. If you have any questions, special requirements or concerns, please send us an inquiry and/or contact our Support team ahead of purchase. Recommended alternatives for this product can be found below, as well as customer reviews and Q&As.

## Properties

<b>Form</b>	Liquid
<b>Storage instructions</b>	Shipped at 4°C. Store at +4°C short term (1-2 weeks). Upon delivery aliquot. Store at -20°C long term. Avoid freeze / thaw cycle.
<b>Storage buffer</b>	pH: 7.40 Constituents: PBS, 50% Glycerol (glycerin, glycerine), 0.03% Proclin 300
<b>Purity</b>	Protein G purified
<b>Purification notes</b>	Purity >95%.
<b>Clonality</b>	Polyclonal
<b>Isotype</b>	IgG

## Applications

Our [Abpromise guarantee](#) covers the use of **ab235528** in the following tested applications.

The application notes include recommended starting dilutions; optimal dilutions/concentrations should be determined by the end user.

Application	Abreviews	Notes
IHC-P		1/20 - 1/200.
WB		1/500 - 1/2000.

## Target

<b>Function</b>	Regulatory subunit for CDC7 which activates its kinase activity thereby playing a central role in DNA replication and cell proliferation. Required for progression of S and M phases. The complex CDC7-DBF4B selectively phosphorylates MCM2 subunit at 'Ser-40' and then is involved in regulating the initiation of DNA replication during cell cycle.
<b>Tissue specificity</b>	Widely expressed. Highly expressed in testis.
<b>Sequence similarities</b>	Contains 1 BRCT domain. Contains 1 DBF4-type zinc finger.
<b>Developmental stage</b>	Increases as cells enter in S phase through G2/M phase. The protein has a short half-life (at

protein level).

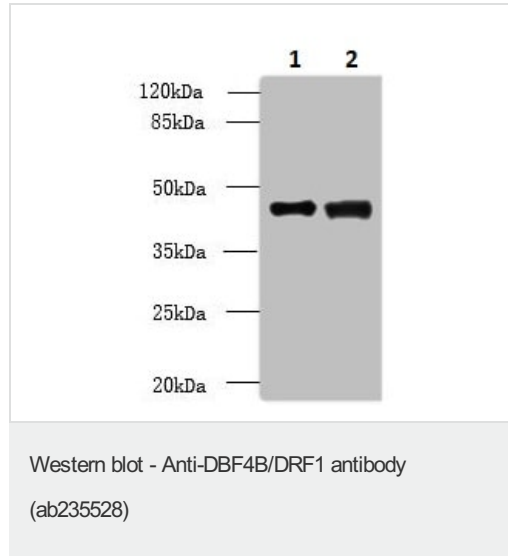
**Post-translational modifications**

Phosphorylated.

**Cellular localization**

Nucleus. Predominantly found in soluble fraction but not in the chromatin-bound fraction.

**Images**



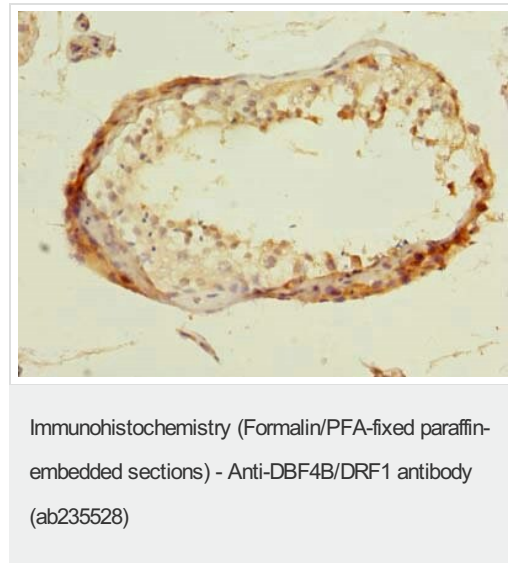
**All lanes** : Anti-DBF4B/DRF1 antibody (ab235528) at 1/500 dilution

**Lane 1** : MCF7 (human breast adenocarcinoma cell line) whole cell lysate

**Lane 2** : A549 (human lung carcinoma cell line) whole cell lysate

**Secondary**

**All lanes** : Goat polyclonal to Rabbit IgG at 1/10000 dilution



Paraffin-embedded human testis tissue stained for DBF4B/DRF1 using ab235528 at 1/100 dilution in immunohistochemical analysis.

**Please note:** All products are "FOR RESEARCH USE ONLY. NOT FOR USE IN DIAGNOSTIC PROCEDURES"

**Our Abpromise to you: Quality guaranteed and expert technical support**

- Replacement or refund for products not performing as stated on the datasheet
- Valid for 12 months from date of delivery
- Response to your inquiry within 24 hours
- We provide support in Chinese, English, French, German, Japanese and Spanish

- Extensive multi-media technical resources to help you
- We investigate all quality concerns to ensure our products perform to the highest standards

If the product does not perform as described on this datasheet, we will offer a refund or replacement. For full details of the Abpromise, please visit <https://www.abcam.com/abpromise> or contact our technical team.

### **Terms and conditions**

---

- Guarantee only valid for products bought direct from Abcam or one of our authorized distributors