

Product datasheet

Anti-dbx2 antibody [EPR12633(B)] ab177470

Recombinant RabMAb

1 Image

Overview

Product name	Anti-dbx2 antibody [EPR12633(B)]
Description	Rabbit monoclonal [EPR12633(B)] to dbx2
Host species	Rabbit
Tested applications	Suitable for: WB Unsuitable for: Flow Cyt, ICC/IF, IHC-P or IP
Species reactivity	Reacts with: Mouse, Rat, Human
Immunogen	Synthetic peptide (the amino acid sequence is considered to be commercially sensitive) within Human dbx2 aa 250 to the C-terminus (Cysteine residue). The exact sequence is proprietary. Database link: P48357
Positive control	HepG2, 293T, HT-1080 and fetal kidney lysates.
General notes	<p>This product is a recombinant monoclonal antibody, which offers several advantages including:</p> <ul style="list-style-type: none"> - High batch-to-batch consistency and reproducibility - Improved sensitivity and specificity - Long-term security of supply - Animal-free production <p>For more information see here.</p> <p>Our RabMAb[®] technology is a patented hybridoma-based technology for making rabbit monoclonal antibodies. For details on our patents, please refer to RabMAb[®] patents.</p> <p>We are constantly working hard to ensure we provide our customers with best in class antibodies. As a result of this work we are pleased to now offer this antibody in purified format. We are in the process of updating our datasheets. The purified format is designated 'PUR' on our product labels. If you have any questions regarding this update, please contact our Scientific Support team.</p>

Properties

Form	Liquid
Storage instructions	Shipped at 4°C. Store at +4°C short term (1-2 weeks). Upon delivery aliquot. Store at -20°C long term. Avoid freeze / thaw cycle.
Storage buffer	pH: 7.20

Constituents: 0.35% Sodium citrate, 0.17% Sodium chloride, 0.03% EDTA, 59% PBS, 40% Glycerol, 0.05% BSA

Purity	Protein A purified
Clonality	Monoclonal
Clone number	EPR12633(B)
Isotype	IgG

Applications

Our [Abpromise guarantee](#) covers the use of **ab177470** in the following tested applications.

The application notes include recommended starting dilutions; optimal dilutions/concentrations should be determined by the end user.

Application	Abreviews	Notes
WB		1/1000 - 1/5000. Predicted molecular weight: 36 kDa.

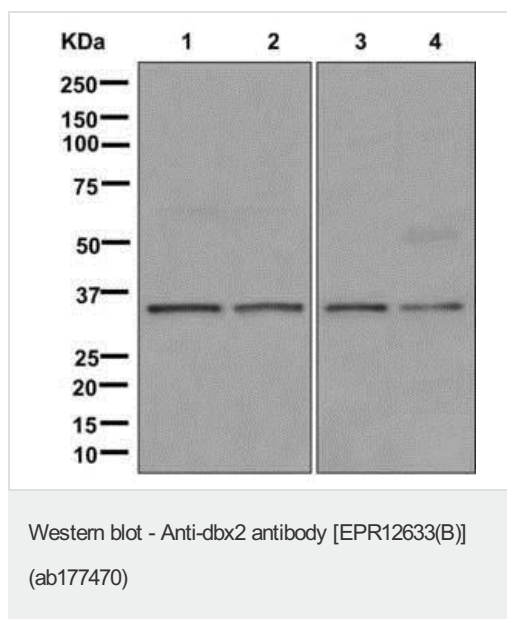
Application notes Is unsuitable for Flow Cyt, ICC/IF, IHC-P or IP.

Target

Relevance Members of the Dbx family are implicated in regionalization of the CNS. Dbx2 is restricted to the ventricular region of the embryonic CNS as well as some of the mesenchymal cells, such as limb buds and tooth germs. BMP regulation of the expression boundaries of the homeobox proteins Dbx2, Pax6 and Msx1 generates precursor populations with distinct developmental potentials.

Cellular localization Nuclear

Images



All lanes : Anti-dbx2 antibody [EPR12633(B)] (ab177470) at 1/1000 dilution

Lane 1 : HepG2 lysate

Lane 2 : 293T lysate

Lane 3 : HT-1080 lysate

Lane 4 : Fetal kidney lysate

Lysates/proteins at 10 µg per lane.

Secondary

All lanes : Goat-anti-rabbit HRP at 1/2000 dilution

Developed using the ECL technique.

Predicted band size: 36 kDa

Please note: All products are "FOR RESEARCH USE ONLY. NOT FOR USE IN DIAGNOSTIC PROCEDURES"

Our Abpromise to you: Quality guaranteed and expert technical support

- Replacement or refund for products not performing as stated on the datasheet
- Valid for 12 months from date of delivery
- Response to your inquiry within 24 hours

- We provide support in Chinese, English, French, German, Japanese and Spanish
- Extensive multi-media technical resources to help you
- We investigate all quality concerns to ensure our products perform to the highest standards

If the product does not perform as described on this datasheet, we will offer a refund or replacement. For full details of the Abpromise, please visit <https://www.abcam.com/abpromise> or contact our technical team.

Terms and conditions

- Guarantee only valid for products bought direct from Abcam or one of our authorized distributors