

Product datasheet

Anti-DCAMKL1 antibody ab106635

1 References 4 Images

Overview

Product name	Anti-DCAMKL1 antibody
Description	Rabbit polyclonal to DCAMKL1
Host species	Rabbit
Tested applications	Suitable for: IHC-P, WB
Species reactivity	Reacts with: Mouse, Rat, Human
Immunogen	Synthetic peptide within Human DCAMKL1 aa 679-729 (C terminal). The exact sequence is proprietary. Sequence: AA GVSVIALDHG FTIKRSGSLD YYQQPGMYWI RPPLLIRRGR FSDEDATRM Database link: O15075-2

 [Run BLAST with](#)

 [Run BLAST with](#)

General notes

Reproducibility is key to advancing scientific discovery and accelerating scientists' next breakthrough.

Abcam is leading the way with our range of recombinant antibodies, knockout-validated antibodies and knockout cell lines, all of which support improved reproducibility.

We are also planning to innovate the way in which we present recommended applications and species on our product datasheets, so that only applications & species that have been tested in our own labs, our suppliers or by selected trusted collaborators are covered by our Abpromise™ guarantee.

In preparation for this, we have started to update the applications & species that this product is Abpromise guaranteed for.

We are also updating the applications & species that this product has been “predicted to work with,” however this information is not covered by our Abpromise guarantee.

Applications & species from publications and Abreviews that have not been tested in our own labs or in those of our suppliers are not covered by the Abpromise guarantee.

Please check that this product meets your needs before purchasing. If you have any questions, special requirements or concerns, please send us an inquiry and/or contact our Support team ahead of purchase. Recommended alternatives for this product can be found below, as well as customer reviews and Q&As.

Properties

Form	Liquid
Storage instructions	Shipped at 4°C. Store at 4°C (stable for up to 12 months).
Storage buffer	pH: 7.2 Preservative: 0.02% Sodium azide Constituent: PBS
Purity	Protein A purified
Purification notes	ab106635 is purified by affinity chromatography via a peptide column.
Clonality	Polyclonal
Isotype	IgG

Applications

Our [Abpromise guarantee](#) covers the use of **ab106635** in the following tested applications.

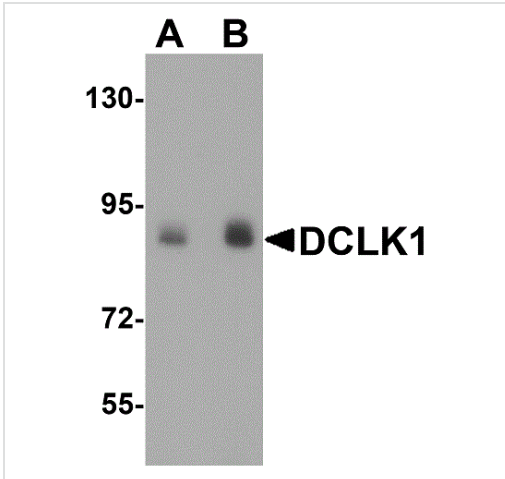
The application notes include recommended starting dilutions; optimal dilutions/concentrations should be determined by the end user.

Application	Abreviews	Notes
IHC-P		Use a concentration of 2.5 µg/ml.
WB		Use a concentration of 0.5 - 1 µg/ml. Predicted molecular weight: 82 kDa.

Target

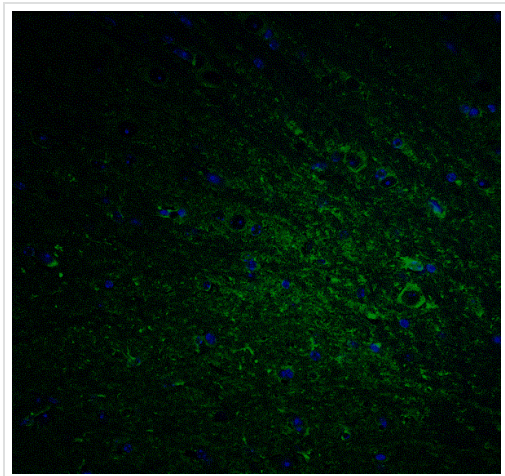
Function	Probable kinase that may be involved in a calcium-signaling pathway controlling neuronal migration in the developing brain. May also participate in functions of the mature nervous system.
Tissue specificity	In fetal tissues, highly expressed in brain, detectable in lung and liver, but not in kidney. In adult tissues, expressed ubiquitously in the brain, detectable in the heart, liver, spleen, thymus, prostate, testis, ovary, small intestine and colon. The type A isoforms seem to be expressed predominantly in fetal brain whereas type B isoforms are expressed abundantly in both fetal and adult brain.
Sequence similarities	Belongs to the protein kinase superfamily. CAMK Ser/Thr protein kinase family. CaMK subfamily. Contains 2 doublecortin domains. Contains 1 protein kinase domain.

Images



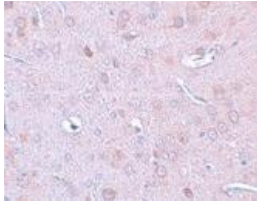
Western blot - Anti-DCAMKL1 antibody (ab106635)

Western blot analysis of DCLK1 expression in rat brain tissue lysate with ab106635 at (A) 1 and (B) 2 µg/ml.



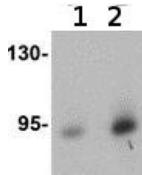
Immunohistochemistry (Formalin/PFA-fixed paraffin-embedded sections) - Anti-DCAMKL1 antibody (ab106635)

Immunohistochemistry (Formalin-fixed paraffin embedded sections) of mouse brain tissue labeling DCAMKL1 with Anti-DCAMKL1 antibody (ab106635) at 20 µg/ml.



ab106635 at 2.5µg/ml, staining DCAMKL1 in Rat brain, using Immunohistochemistry, Formalin-fixed, Paraffin-embedded tissue.

Immunohistochemistry (Formalin/PFA-fixed paraffin-embedded sections) - Anti-DCAMKL1 antibody (ab106635)



Lane 1 : Anti-DCAMKL1 antibody (ab106635) at 0.5 µg/ml

Lane 2 : Anti-DCAMKL1 antibody (ab106635) at 1 µg/ml

All lanes : Human brain tissue lysate

Western blot - Anti-DCAMKL1 antibody (ab106635)

Lysates/proteins at 15 µg per lane.

Predicted band size: 82 kDa

Please note: All products are "FOR RESEARCH USE ONLY. NOT FOR USE IN DIAGNOSTIC PROCEDURES"

Our Abpromise to you: Quality guaranteed and expert technical support

- Replacement or refund for products not performing as stated on the datasheet
- Valid for 12 months from date of delivery
- Response to your inquiry within 24 hours
- We provide support in Chinese, English, French, German, Japanese and Spanish
- Extensive multi-media technical resources to help you
- We investigate all quality concerns to ensure our products perform to the highest standards

If the product does not perform as described on this datasheet, we will offer a refund or replacement. For full details of the Abpromise, please visit <https://www.abcam.com/abpromise> or contact our technical team.

Terms and conditions

- Guarantee only valid for products bought direct from Abcam or one of our authorized distributors