


## Product datasheet

# Anti-DCAMKL1 antibody ab226967

[3 Images](#)

### Overview

---

<b>Product name</b>	Anti-DCAMKL1 antibody
<b>Description</b>	Rabbit polyclonal to DCAMKL1
<b>Host species</b>	Rabbit
<b>Tested applications</b>	<b>Suitable for:</b> WB
<b>Species reactivity</b>	<b>Reacts with:</b> Mouse, Rat, Human <b>Predicted to work with:</b> Chicken 
<b>Positive control</b>	WB: Mouse brain and hippocampus tissue extract. Rat brain tissue extract. U-87 MG, SK-N-SH, IMR32 and SK-N-AS whole cell extract.
<b>General notes</b>	<p>Reproducibility is key to advancing scientific discovery and accelerating scientists' next breakthrough.</p> <p>Abcam is leading the way with our range of recombinant antibodies, knockout-validated antibodies and knockout cell lines, all of which support improved reproducibility.</p> <p>We are also planning to innovate the way in which we present recommended applications and species on our product datasheets, so that only applications &amp; species that have been tested in our own labs, our suppliers or by selected trusted collaborators are covered by our Abpromise™ guarantee.</p> <p>In preparation for this, we have started to update the applications &amp; species that this product is Abpromise guaranteed for.</p> <p>We are also updating the applications &amp; species that this product has been “predicted to work with,” however this information is not covered by our Abpromise guarantee.</p> <p>Applications &amp; species from publications and Abreviews that have not been tested in our own labs or in those of our suppliers are not covered by the Abpromise guarantee.</p> <p>Please check that this product meets your needs before purchasing. If you have any questions, special requirements or concerns, please send us an inquiry and/or contact our Support team ahead of purchase. Recommended alternatives for this product can be found below, as well as customer reviews and Q&amp;As.</p>

### Properties

---

<b>Form</b>	Liquid
<b>Storage instructions</b>	Shipped at 4°C. Store at +4°C short term (1-2 weeks). Upon delivery aliquot. Store at -20°C long

term. Avoid freeze / thaw cycle.

**Storage buffer**

pH: 7.00  
Preservative: 0.025% Proclin 300  
Constituents: 79% PBS, 20% Glycerol (glycerin, glycerine)

**Purity**

Immunogen affinity purified

**Clonality**

Polyclonal

**Applications**

Our [Abpromise guarantee](#) covers the use of **ab226967** in the following tested applications.

The application notes include recommended starting dilutions; optimal dilutions/concentrations should be determined by the end user.

Application	Abreviews	Notes
WB		1/500 - 1/1000. Predicted molecular weight: 82 kDa.

**Target**

**Function**

Probable kinase that may be involved in a calcium-signaling pathway controlling neuronal migration in the developing brain. May also participate in functions of the mature nervous system.

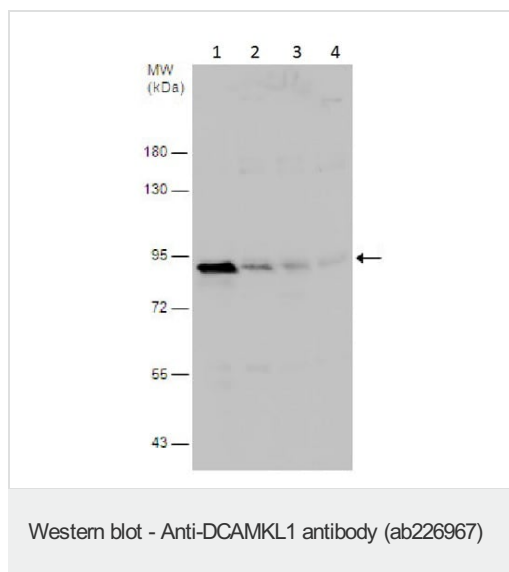
**Tissue specificity**

In fetal tissues, highly expressed in brain, detectable in lung and liver, but not in kidney. In adult tissues, expressed ubiquitously in the brain, detectable in the heart, liver, spleen, thymus, prostate, testis, ovary, small intestine and colon. The type A isoforms seem to be expressed predominantly in fetal brain whereas type B isoforms are expressed abundantly in both fetal and adult brain.

**Sequence similarities**

Belongs to the protein kinase superfamily. CAMK Ser/Thr protein kinase family. CaMK subfamily. Contains 2 doublecortin domains.  
Contains 1 protein kinase domain.

**Images**



**All lanes :** Anti-DCAMKL1 antibody (ab226967) at 1/1000 dilution

**Lane 1 :** U-87 MG (human glioblastoma-astrocytoma epithelial cell line) whole cell extracts

**Lane 2 :** SK-N-SH (human neuroblastoma cell line) whole cell extracts

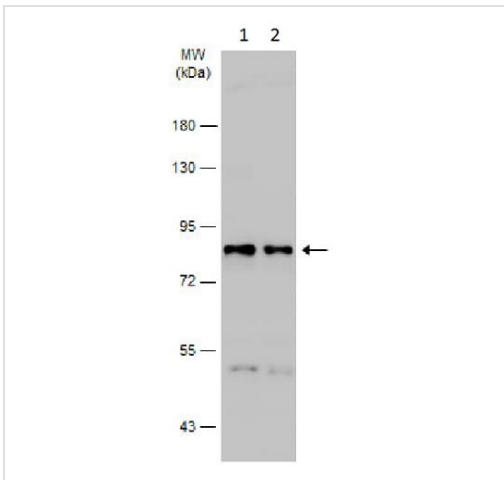
**Lane 3 :** IMR32 (human brain neuroblast cell line) whole cell extracts

**Lane 4 :** SK-N-AS (human brain neuroblastoma cell line) whole cell extracts

Developed using the ECL technique.

**Predicted band size:** 82 kDa

7.5% SDS-PAGE



Western blot - Anti-DCAMKL1 antibody (ab226967)

**All lanes :** Anti-DCAMKL1 antibody (ab226967) at 1/5000 dilution

**Lane 1 :** Mouse brain tissue extract

**Lane 2 :** Rat brain tissue extract

Lysates/proteins at 50 µg per lane.

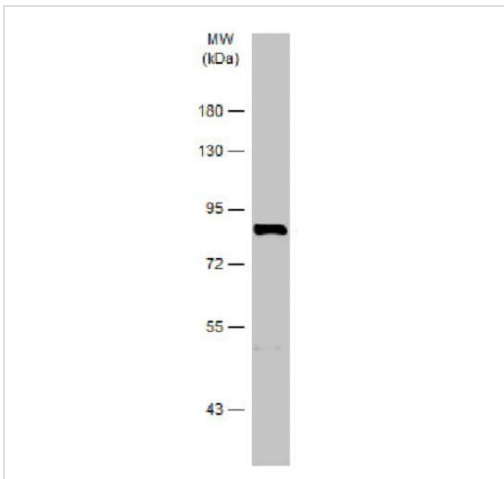
**Secondary**

**All lanes :** HRP-conjugated anti-rabbit IgG antibody

Developed using the ECL technique.

**Predicted band size:** 82 kDa

7.5% SDS-PAGE



Western blot - Anti-DCAMKL1 antibody (ab226967)

Anti-DCAMKL1 antibody (ab226967) at 1/5000 dilution + Mouse hippocampus tissue extract at 50 µg

**Secondary**

HRP-conjugated anti-rabbit IgG

Developed using the ECL technique.

**Predicted band size:** 82 kDa

7.5% SDS-PAGE

**Please note:** All products are "FOR RESEARCH USE ONLY. NOT FOR USE IN DIAGNOSTIC PROCEDURES"

**Our Abpromise to you: Quality guaranteed and expert technical support**

- Replacement or refund for products not performing as stated on the datasheet
- Valid for 12 months from date of delivery

- Response to your inquiry within 24 hours
- We provide support in Chinese, English, French, German, Japanese and Spanish
- Extensive multi-media technical resources to help you
- We investigate all quality concerns to ensure our products perform to the highest standards

If the product does not perform as described on this datasheet, we will offer a refund or replacement. For full details of the Abpromise, please visit <https://www.abcam.com/abpromise> or contact our technical team.

### **Terms and conditions**

---

- Guarantee only valid for products bought direct from Abcam or one of our authorized distributors