

## Product datasheet

# Anti-DCLK2 antibody ab106639

1 References 3 Images

### Overview

---

<b>Product name</b>	Anti-DCLK2 antibody
<b>Description</b>	Rabbit polyclonal to DCLK2
<b>Host species</b>	Rabbit
<b>Tested applications</b>	<b>Suitable for:</b> IHC-P, WB
<b>Species reactivity</b>	<b>Reacts with:</b> Mouse, Rat, Human
<b>Immunogen</b>	Synthetic peptide corresponding to Human DCLK2 (C terminal). Database link: <a href="#">NP_001035350</a>
<b>Positive control</b>	Rat brain tissue and tissue lysate.
<b>General notes</b>	Previously labelled as DCAMKL2.  Reproducibility is key to advancing scientific discovery and accelerating scientists' next breakthrough.  Abcam is leading the way with our range of recombinant antibodies, knockout-validated antibodies and knockout cell lines, all of which support improved reproducibility.  We are also planning to innovate the way in which we present recommended applications and species on our product datasheets, so that only applications & species that have been tested in our own labs, our suppliers or by selected trusted collaborators are covered by our Abpromise™ guarantee.  In preparation for this, we have started to update the applications & species that this product is Abpromise guaranteed for.  We are also updating the applications & species that this product has been "predicted to work with," however this information is not covered by our Abpromise guarantee.  Applications & species from publications and Abreviews that have not been tested in our own labs or in those of our suppliers are not covered by the Abpromise guarantee.  Please check that this product meets your needs before purchasing. If you have any questions, special requirements or concerns, please send us an inquiry and/or contact our Support team ahead of purchase. Recommended alternatives for this product can be found below, as well as customer reviews and Q&As.

### Properties

---

<b>Form</b>	Liquid
-------------	--------

<b>Storage instructions</b>	Shipped at 4°C. Store at 4°C (stable for up to 12 months).
<b>Storage buffer</b>	pH: 7.2 Preservative: 0.02% Sodium azide Constituent: PBS
<b>Purity</b>	Protein A purified
<b>Purification notes</b>	ab106639 is purified by affinity chromatography via a peptide column.
<b>Clonality</b>	Polyclonal
<b>Isotype</b>	IgG

## Applications

Our [Abpromise guarantee](#) covers the use of **ab106639** in the following tested applications.

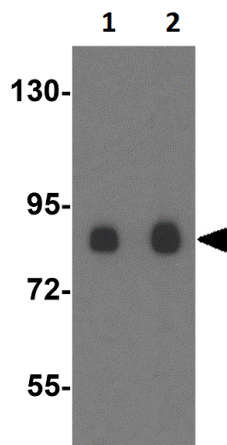
The application notes include recommended starting dilutions; optimal dilutions/concentrations should be determined by the end user.

Application	Abreviews	Notes
IHC-P		Use a concentration of 5 µg/ml.
WB		Use a concentration of 1 - 2 µg/ml. Predicted molecular weight: 84 kDa.

## Target

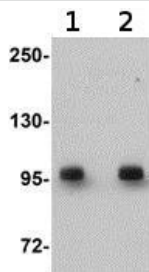
<b>Function</b>	Protein kinase with a significantly reduced Ca <sup>2+</sup> /CAM affinity and dependence compared to other members of the CaMK family. May play a role in the down-regulation of CRE-dependent gene activation probably by phosphorylation of the CREB coactivator CRTC2/TORC2 and the resulting retention of TORC2 in the cytoplasm.
<b>Sequence similarities</b>	Belongs to the protein kinase superfamily. CAMK Ser/Thr protein kinase family. CaMK subfamily. Contains 2 doublecortin domains. Contains 1 protein kinase domain.
<b>Domain</b>	The doublecortin domains are involved in the colocalization with microtubules.
<b>Cellular localization</b>	Cytoplasm > cytoskeleton. Colocalizes with microtubules.

## Images



Western blot - Anti-DCLK2 antibody (ab106639)

Western Blot of rat brain tissue lysate labeling DCLK2 with Anti-DCLK2 antibody (ab106639) at (1) 1 and (2) 2µg/ml.



Western blot - Anti-DCLK2 antibody (ab106639)

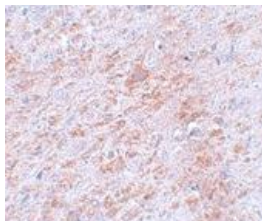
**Lane 1 :** Anti-DCLK2 antibody (ab106639) at 1 µg/ml

**Lane 2 :** Anti-DCLK2 antibody (ab106639) at 2 µg/ml

**All lanes :** Rat brain tissue lysate

Lysates/proteins at 15 µg per lane.

**Predicted band size:** 84 kDa



Immunohistochemistry (Formalin/PFA-fixed paraffin-embedded sections) - Anti-DCLK2 antibody (ab106639)

ab106639 at 5µg/ml, staining DCLK2 in Rat brain, using Immunohistochemistry, Formalin-fixed, Paraffin-embedded tissue.

**Please note:** All products are "FOR RESEARCH USE ONLY. NOT FOR USE IN DIAGNOSTIC PROCEDURES"

### **Our Abpromise to you: Quality guaranteed and expert technical support**

---

- Replacement or refund for products not performing as stated on the datasheet
- Valid for 12 months from date of delivery
- Response to your inquiry within 24 hours
  
- We provide support in Chinese, English, French, German, Japanese and Spanish
- Extensive multi-media technical resources to help you
- We investigate all quality concerns to ensure our products perform to the highest standards

If the product does not perform as described on this datasheet, we will offer a refund or replacement. For full details of the Abpromise, please visit <https://www.abcam.com/abpromise> or contact our technical team.

### **Terms and conditions**

---

- Guarantee only valid for products bought direct from Abcam or one of our authorized distributors