

Product datasheet

Anti-DCTN3 antibody ab229010

1 Image

Overview

<b>Product name</b>	Anti-DCTN3 antibody
<b>Description</b>	Rabbit polyclonal to DCTN3
<b>Host species</b>	Rabbit
<b>Tested applications</b>	<b>Suitable for:</b> WB
<b>Species reactivity</b>	<b>Reacts with:</b> Human
<b>Immunogen</b>	Recombinant full length protein corresponding to Human DCTN3. Database link: <a href="#">O75935</a>
<b>Positive control</b>	WB: HCT 116 whole cell lysate.

Properties

<b>Form</b>	Liquid
<b>Storage instructions</b>	Shipped at 4°C. Store at +4°C short term (1-2 weeks). Upon delivery aliquot. Store at -20°C long term. Avoid freeze / thaw cycle.
<b>Storage buffer</b>	pH: 7.00 Preservative: 0.01% Thimerosal (merthiolate) Constituents: PBS, 1% BSA, 20% Glycerol
<b>Purity</b>	Immunogen affinity purified
<b>Clonality</b>	Polyclonal
<b>Isotype</b>	IgG

Applications

Our [Abpromise guarantee](#) covers the use of **ab229010** in the following tested applications.

The application notes include recommended starting dilutions; optimal dilutions/concentrations should be determined by the end user.

Application	Abreviews	Notes
WB		1/500 - 1/3000. Predicted molecular weight: 21 kDa.

## Target

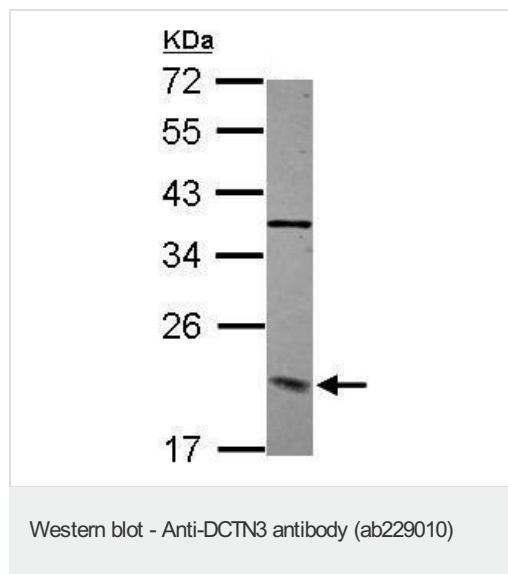
---

<b>Function</b>	Together with dynein may be involved in spindle assembly and cytokinesis.
<b>Tissue specificity</b>	Ubiquitously expressed. Highly expressed in muscle and pancreas and detected at lower levels in brain.
<b>Sequence similarities</b>	Belongs to the dynactin subunit 3 family.
<b>Cellular localization</b>	Cytoplasm. Cytoplasm > cytoskeleton > centrosome. Chromosome > centromere > kinetochore. Cytoplasm > cytoskeleton > spindle. Cleavage furrow. Midbody. Localizes to punctate cytoplasmic structures and to the centrosome during interphase, and to kinetochores and to spindle poles throughout mitosis. Colocalizes with dynein to the cleavage furrow and to midbody of dividing cells.

---

## Images

---



Anti-DCTN3 antibody (ab229010) at 1/500 dilution + HCT 116 (human colorectal carcinoma cell line) whole cell lysate at 30 µg

**Predicted band size:** 21 kDa

12% SDS-PAGE gel.

**Please note:** All products are "FOR RESEARCH USE ONLY. NOT FOR USE IN DIAGNOSTIC PROCEDURES"

## Our Abpromise to you: Quality guaranteed and expert technical support

---

- Replacement or refund for products not performing as stated on the datasheet
- Valid for 12 months from date of delivery
- Response to your inquiry within 24 hours
- We provide support in Chinese, English, French, German, Japanese and Spanish
- Extensive multi-media technical resources to help you
- We investigate all quality concerns to ensure our products perform to the highest standards

If the product does not perform as described on this datasheet, we will offer a refund or replacement. For full details of the Abpromise, please visit <https://www.abcam.com/abpromise> or contact our technical team.

## Terms and conditions

---

- Guarantee only valid for products bought direct from Abcam or one of our authorized distributors