

## Product datasheet

# Anti-DCXR antibody [4G4AF5] ab110283

2 References 3 Images

### Overview

---

<b>Product name</b>	Anti-DCXR antibody [4G4AF5]
<b>Description</b>	Mouse monoclonal [4G4AF5] to DCXR
<b>Host species</b>	Mouse
<b>Tested applications</b>	<b>Suitable for:</b> WB, ICC/IF, Flow Cyt
<b>Species reactivity</b>	<b>Reacts with:</b> Human
<b>Immunogen</b>	Tissue, cells or virus. This information is considered to be commercially sensitive.
<b>Positive control</b>	Isolated human liver mitochondria; Human HDFn cells; HL-60 cells.
<b>General notes</b>	<p>This antibody clone is manufactured by Abcam.</p> <p>Product was previously marketed under the MitoSciences sub-brand.</p> <p>If you require this antibody in a particular buffer formulation or a particular conjugate for your experiments, please contact <a href="mailto:orders@abcam.com">orders@abcam.com</a> or you can find further information <a href="#">here</a>.</p> <p>Reproducibility is key to advancing scientific discovery and accelerating scientists' next breakthrough.</p> <p>Abcam is leading the way with our range of recombinant antibodies, knockout-validated antibodies and knockout cell lines, all of which support improved reproducibility.</p> <p>We are also planning to innovate the way in which we present recommended applications and species on our product datasheets, so that only applications &amp; species that have been tested in our own labs, our suppliers or by selected trusted collaborators are covered by our Abpromise™ guarantee.</p> <p>In preparation for this, we have started to update the applications &amp; species that this product is Abpromise guaranteed for.</p> <p>We are also updating the applications &amp; species that this product has been “predicted to work with,” however this information is not covered by our Abpromise guarantee.</p> <p>Applications &amp; species from publications and Abreviews that have not been tested in our own labs or in those of our suppliers are not covered by the Abpromise guarantee.</p> <p>Please check that this product meets your needs before purchasing. If you have any questions, special requirements or concerns, please send us an inquiry and/or contact our Support team ahead of purchase. Recommended alternatives for this product can be found below, as well as customer reviews and Q&amp;As.</p>

## Properties

---

<b>Form</b>	Liquid
<b>Storage instructions</b>	Shipped at 4°C. Store at +4°C. Do Not Freeze.
<b>Storage buffer</b>	Preservative: 0.02% Sodium azide Constituent: HEPES buffered saline
<b>Purity</b>	Affinity purified
<b>Purification notes</b>	The antibody was produced in vitro using hybridomas grown in serum-free medium, and then purified by affinity purification. Purity near homogeneity as judged by SDS-PAGE. Purity >95% by SDS-PAGE.
<b>Clonality</b>	Monoclonal
<b>Clone number</b>	4G4AF5
<b>Isotype</b>	IgG1
<b>Light chain type</b>	kappa

## Applications

---

Our [Abpromise guarantee](#) covers the use of **ab110283** in the following tested applications.

The application notes include recommended starting dilutions; optimal dilutions/concentrations should be determined by the end user.

Application	Abreviews	Notes
WB		Use a concentration of 1 µg/ml. Predicted molecular weight: 26 kDa.
ICC/IF		Use a concentration of 4 µg/ml.
Flow Cyt		Use a concentration of 1 µg/ml. <a href="#">ab170190</a> - Mouse monoclonal IgG1, is suitable for use as an isotype control with this antibody.

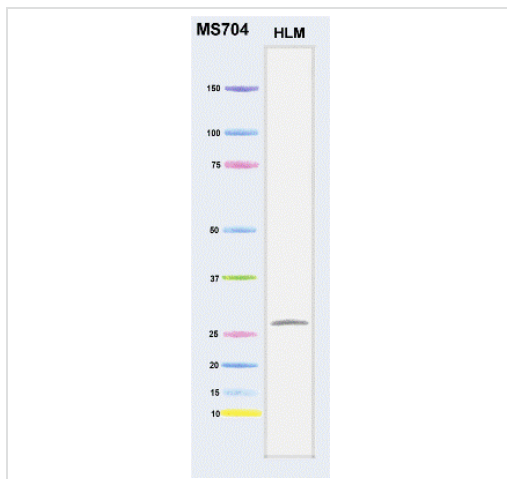
---

## Target

---

<b>Function</b>	Catalyzes the NADPH-dependent reduction of several pentoses, tetroses, trioses, alpha-dicarbonyl compounds and L-xylulose. Participates in the uronate cycle of glucose metabolism. May play a role in the water absorption and cellular osmoregulation in the proximal renal tubules by producing xylitol, an osmolyte, thereby preventing osmolytic stress from occurring in the renal tubules.
<b>Tissue specificity</b>	Highly expressed in kidney, liver and epididymis. In the epididymis, it is mainly expressed in the proximal and distal sections of the corpus region. Weakly or not expressed in brain, lung, heart, spleen and testis.
<b>Involvement in disease</b>	Note=The enzyme defect in pentosuria has been shown to involve L-xylulose reductase. Essential pentosuria is an inborn error of metabolism characterized by the excessive urinary excretion of the pentose L-xylulose.
<b>Sequence similarities</b>	Belongs to the short-chain dehydrogenases/reductases (SDR) family.
<b>Cellular localization</b>	Membrane. Probably recruited to membranes via an interaction with phosphatidylinositol.

---



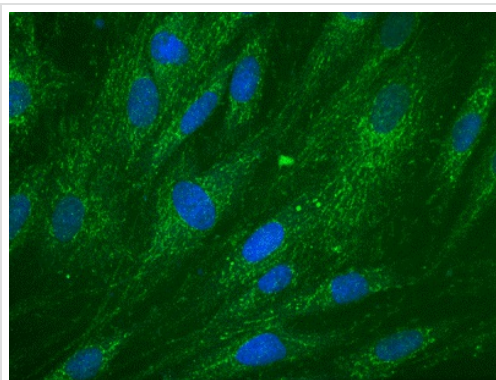
Western blot - Anti-DCXR antibody [4G4AF5] (ab110283)

Anti-DCXR antibody [4G4AF5] (ab110283) at 1  $\mu\text{g/ml}$  + Human liver mitochondria at 20  $\mu\text{g}$

**Secondary**

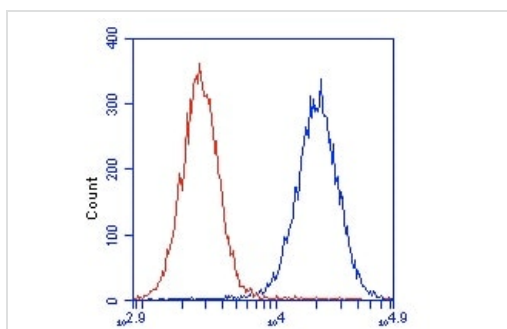
Goat anti-mouse conjugated to AP

**Predicted band size:** 26 kDa



Immunocytochemistry/ Immunofluorescence - Anti-DCXR antibody [4G4AF5] (ab110283)

Immunocytochemistry image of ab110283 stained Human HDFn cells. The cells were paraformaldehyde fixed (4%, 20 min) and Triton X-100 permeabilized (0.1%, 15min). The cells were incubated with ab110283 at 4  $\mu\text{g/ml}$  for 2h at room temperature or over night at 4°C. The secondary antibody was (green) AlexaFluor® 488 goat anti-mouse IgG (H+L) used at a 1/1000 dilution for 1h. 10% Goat serum was used as the blocking agent for all blocking steps. DAPI was used to stain the cell nuclei (blue). Target protein locates mainly in the cell membrane.



Flow Cytometry - Anti-DCXR antibody [4G4AF5] (ab110283)

HL-60 cells were stained with 1  $\mu\text{g/mL}$  ab110283 (blue) or an equal amount of an isotype control antibody (red) and analyzed by flow cytometry.

## **Our Abpromise to you: Quality guaranteed and expert technical support**

---

- Replacement or refund for products not performing as stated on the datasheet
- Valid for 12 months from date of delivery
- Response to your inquiry within 24 hours
  
- We provide support in Chinese, English, French, German, Japanese and Spanish
- Extensive multi-media technical resources to help you
- We investigate all quality concerns to ensure our products perform to the highest standards

If the product does not perform as described on this datasheet, we will offer a refund or replacement. For full details of the Abpromise, please visit <https://www.abcam.com/abpromise> or contact our technical team.

## **Terms and conditions**

---

- Guarantee only valid for products bought direct from Abcam or one of our authorized distributors