




Product datasheet

Anti-DDOST antibody ab204314

3 Images

Overview

Product name	Anti-DDOST antibody
Description	Rabbit polyclonal to DDOST
Host species	Rabbit
Tested applications	Suitable for: IHC-P, WB, ICC/IF
Species reactivity	Reacts with: Human Predicted to work with: Mouse, Rat, Chicken, Cow, Dog, Pig, Xenopus laevis, Orangutan, Xenopus tropicalis 
Immunogen	Recombinant fragment corresponding to Human DDOST aa 288-418. Sequence: NYELAVALSRRWFKEEGVLRVGPVSHHRVGETAPPN AYTVDLVEYSMI QQLSNGKWVPFDGDDIQLEFVRIDPFVRTFLKKKGGK YSVQFKLPDVYGV FQFKVDYNRLGYTHLYSSTQVSVRPLQHTQY Database link: P39656 <div style="text-align: right;">  Run BLAST with  Run BLAST with </div>
Positive control	Human duodenum tissue. RT-4 and U-251 MG cell lysates. U-2 OS cells.

Properties

Form	Liquid
Storage instructions	Shipped at 4°C. Store at +4°C short term (1-2 weeks). Upon delivery aliquot. Store at -20°C long term. Avoid freeze / thaw cycle.
Storage buffer	pH: 7.2 Preservative: 0.02% Sodium azide Constituents: 40% Glycerol, 59% PBS
Purity	Immunogen affinity purified
Clonality	Polyclonal
Isotype	IgG

Applications

Our [Abpromise guarantee](#) covers the use of **ab204314** in the following tested applications.

The application notes include recommended starting dilutions; optimal dilutions/concentrations should be determined by the end user.

Application	Abreviews	Notes
IHC-P		1/500 - 1/1000. Perform heat mediated antigen retrieval with citrate buffer pH 6 before commencing with IHC staining protocol.
WB		1/100 - 1/250. Predicted molecular weight: 51 kDa.
ICC/IF		Use a concentration of 1 - 4 µg/ml.

Target

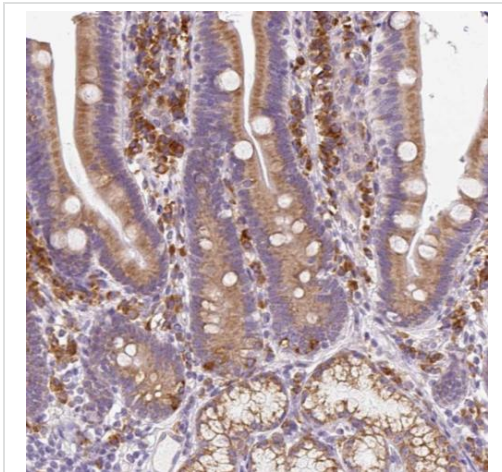
Relevance

DDOST (Dolichyl-diphosphooligosaccharide-protein glycosyltransferase) is a component of the oligosaccharyltransferase complex. This complex catalyzes the transfer of high-mannose oligosaccharides to asparagine residues on nascent polypeptides in the lumen of the rough endoplasmic reticulum and co-purifies with ribosomes. DDOST is also implicated in the processing of advanced glycation endproducts (AGEs), which form from non-enzymatic reactions between sugars and proteins or lipids and are associated with aging and hyperglycemia.

Cellular localization

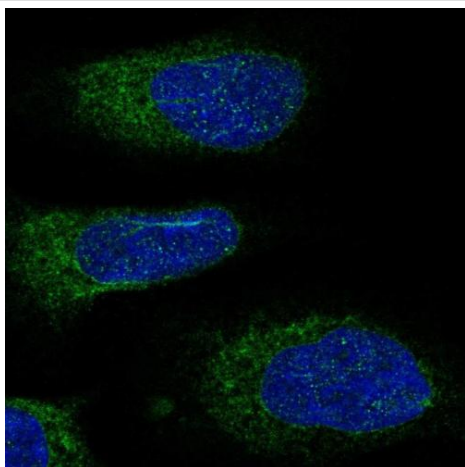
Endoplasmic reticulum membrane; Single-pass type I membrane protein.

Images



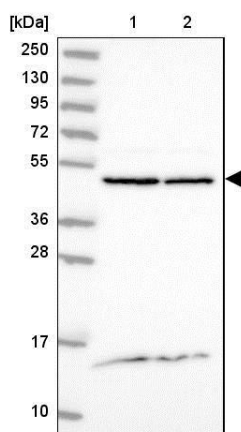
Immunohistochemical analysis of paraffin-embedded Human duodenum tissue, labeling DDOST using ab204314 at a 1/500 dilution.

Immunohistochemistry (Formalin/PFA-fixed paraffin-embedded sections) - Anti-DDOST antibody (ab204314)



Immunofluorescence analysis of paraformaldehyde-fixed U-2 OS cells labeling DDOST using ab204314 at 4 µg/ml (green).

Immunocytochemistry/ Immunofluorescence - Anti-DDOST antibody (ab204314)



All lanes : Anti-DDOST antibody (ab204314) at 1/100 dilution

Lane 1 : RT-4 cell lysate

Lane 2 : U-251 MG cell lysate

Developed using the ECL technique.

Predicted band size: 51 kDa

Western blot - Anti-DDOST antibody (ab204314)

Please note: All products are "FOR RESEARCH USE ONLY. NOT FOR USE IN DIAGNOSTIC PROCEDURES"

Our Abpromise to you: Quality guaranteed and expert technical support

- Replacement or refund for products not performing as stated on the datasheet
- Valid for 12 months from date of delivery
- Response to your inquiry within 24 hours
- We provide support in Chinese, English, French, German, Japanese and Spanish
- Extensive multi-media technical resources to help you
- We investigate all quality concerns to ensure our products perform to the highest standards

If the product does not perform as described on this datasheet, we will offer a refund or replacement. For full details of the Abpromise, please visit <https://www.abcam.com/abpromise> or contact our technical team.

Terms and conditions

- Guarantee only valid for products bought direct from Abcam or one of our authorized distributors