


Product datasheet

Anti-DDX24 antibody ab70463

1 Image

Overview

Product name	Anti-DDX24 antibody
Description	Rabbit polyclonal to DDX24
Host species	Rabbit
Tested applications	Suitable for: WB
Species reactivity	Reacts with: Mouse, Human Predicted to work with: Chimpanzee, Rhesus monkey, Gorilla, Orangutan 
Immunogen	Synthetic peptide corresponding to a region between residue 325 and 375 of Human DDX24 (NP_065147.1)

Properties

Form	Liquid
Storage instructions	Shipped at 4°C. Upon delivery aliquot and store at -20°C. Avoid freeze / thaw cycles.
Storage buffer	pH: 7 Preservative: 0.09% Sodium azide Constituents: 1.815% Tris, 1.764% Sodium citrate, 0.021% PBS
Purity	Immunogen affinity purified
Clonality	Polyclonal
Isotype	IgG

Applications

Our [Abpromise guarantee](#) covers the use of **ab70463** in the following tested applications.

The application notes include recommended starting dilutions; optimal dilutions/concentrations should be determined by the end user.

Application	Abreviews	Notes
-------------	-----------	-------

WB

Application notes	IP: Use at 2-5µg/mg of lysate. WB: 1/2000 - 1/10000. Detects a band of approximately 120 kDa (predicted molecular weight: 97
--------------------------	---

kDa).

Not yet tested in other applications.

Optimal dilutions/concentrations should be determined by the end user.

Target

Function

ATP-dependent RNA helicase.

Tissue specificity

Ubiquitous. Most abundant in heart and brain, but with lowest levels in thymus and small intestine.

Sequence similarities

Belongs to the DEAD box helicase family. DDX24/MAK5 subfamily.

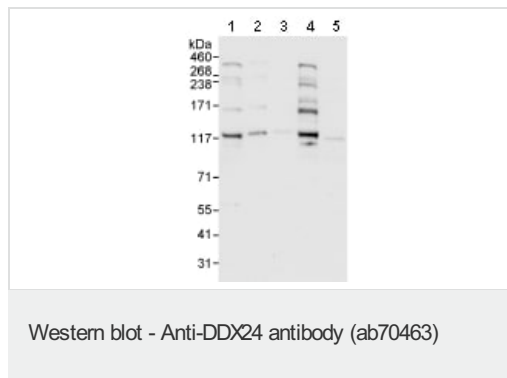
Contains 1 helicase ATP-binding domain.

Contains 1 helicase C-terminal domain.

Post-translational modifications

Phosphorylated upon DNA damage, probably by ATM or ATR.

Images



All lanes : Anti-DDX24 antibody (ab70463) at 0.1 µg/ml

Lane 1 : HeLa whole cell lysate at 50 µg

Lane 2 : HeLa whole cell lysate at 15 µg

Lane 3 : HeLa whole cell lysate at 5 µg

Lane 4 : 293T whole cell lysate at 50 µg

Lane 5 : NIH3T3 whole cell lysate at 50 µg

Predicted band size: 97 kDa

Observed band size: 120 kDa

[why is the actual band size different from the predicted?](#)

Additional bands at: 160 kDa, 230 kDa, 350 kDa. We are unsure as to the identity of these extra bands.

Exposure time: 10 seconds

Please note: All products are "FOR RESEARCH USE ONLY. NOT FOR USE IN DIAGNOSTIC PROCEDURES"

Our Abpromise to you: Quality guaranteed and expert technical support

- Replacement or refund for products not performing as stated on the datasheet
- Valid for 12 months from date of delivery
- Response to your inquiry within 24 hours
- We provide support in Chinese, English, French, German, Japanese and Spanish

- Extensive multi-media technical resources to help you
- We investigate all quality concerns to ensure our products perform to the highest standards

If the product does not perform as described on this datasheet, we will offer a refund or replacement. For full details of the Abpromise, please visit <https://www.abcam.com/abpromise> or contact our technical team.

Terms and conditions

- Guarantee only valid for products bought direct from Abcam or one of our authorized distributors